

PHOTOMETRIC TEST REPORT



FIXTURE DATA

Manufacturer: Clay Paky s.r.l.
Fixture model: Mini-B Spot
Date: 2022-12-7

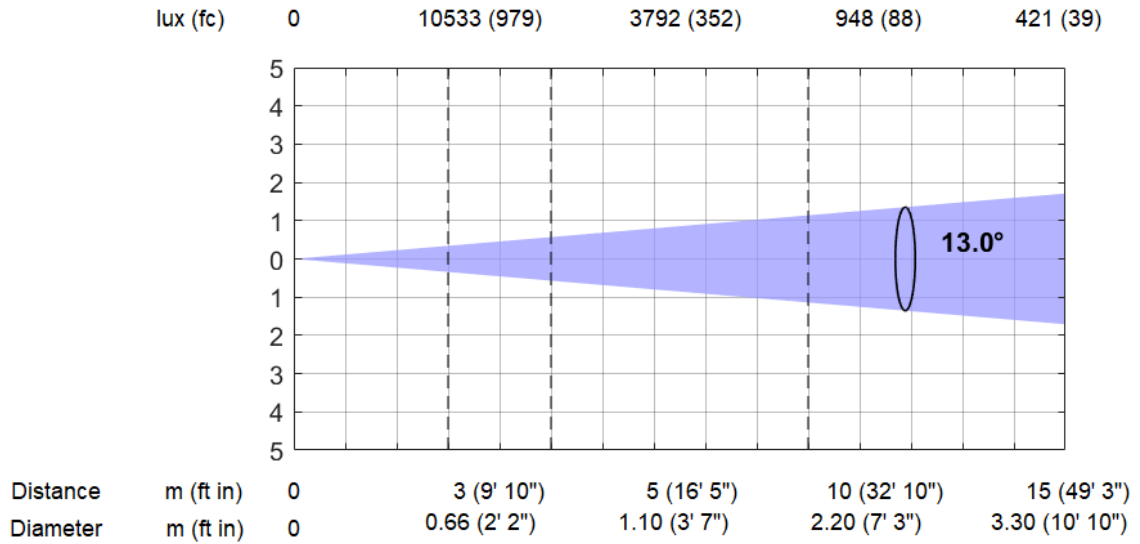
TABLE OF CONTENTS:

➤ MINIMUM ZOOM: FAN MODE AUTO / COSTANT	3
➤ MINIMUM ZOOM: FAN MODE SILENT	4
➤ MINIMUM ZOOM: FAN MODE THEATRE	5
➤ MAXIMUM ZOOM: FAN MODE AUTO / CONSTANT	6
➤ MAXIMUM ZOOM: FAN MODE SILENT	7
➤ MAXIMUM ZOOM: FAN MODE THEATRE	8
➤ TM-30: 7500K	9

MINIMUM ZOOM: FAN MODE AUTO / COSTANT

AUTO / CONSTANT fan mode (13°)

Total Output: 3410 lumens

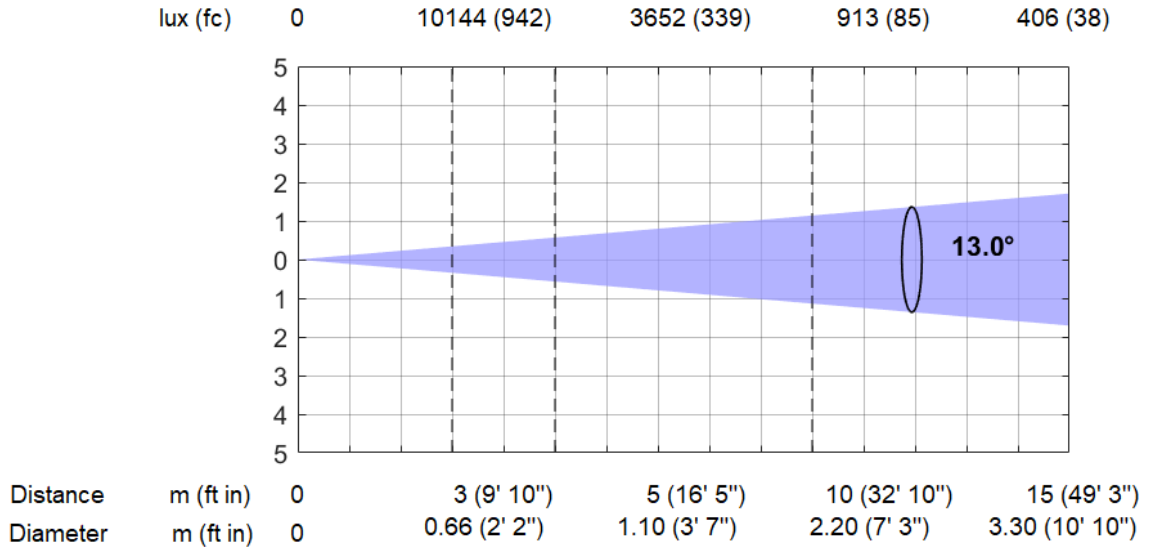


*Lumen values detected with integrating sphere. Measurements taken 15 minutes after the fixture was turned on.

MINIMUM ZOOM: FAN MODE SILENT

SLN fan mode (13°)

Total Output: 3278 lumens

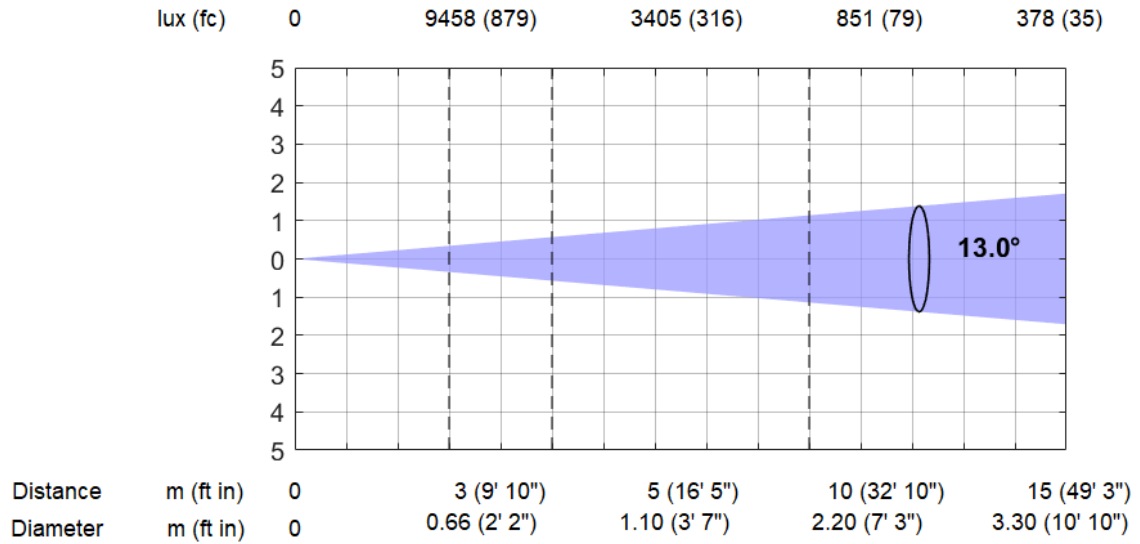


*Lumen values detected with integrating sphere. Measurements taken 15 minutes after the fixture was turned on.

MINIMUM ZOOM: FAN MODE THEATRE

THEATRE fan mode (13°)

Total Output: 3042 lumens

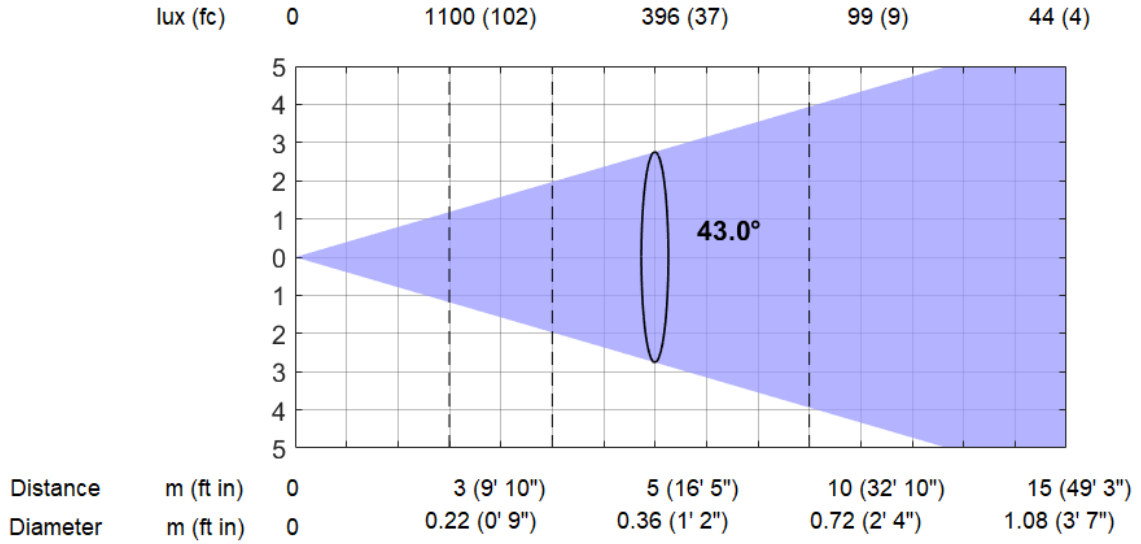


*Lumen values detected with integrating sphere. Measurements taken 15 minutes after the fixture was turned on.

MAXIMUM ZOOM: FAN MODE AUTO / CONSTANT

AUTO / CONSTANT fan mode (43°)

Total Output: 3450 lumens

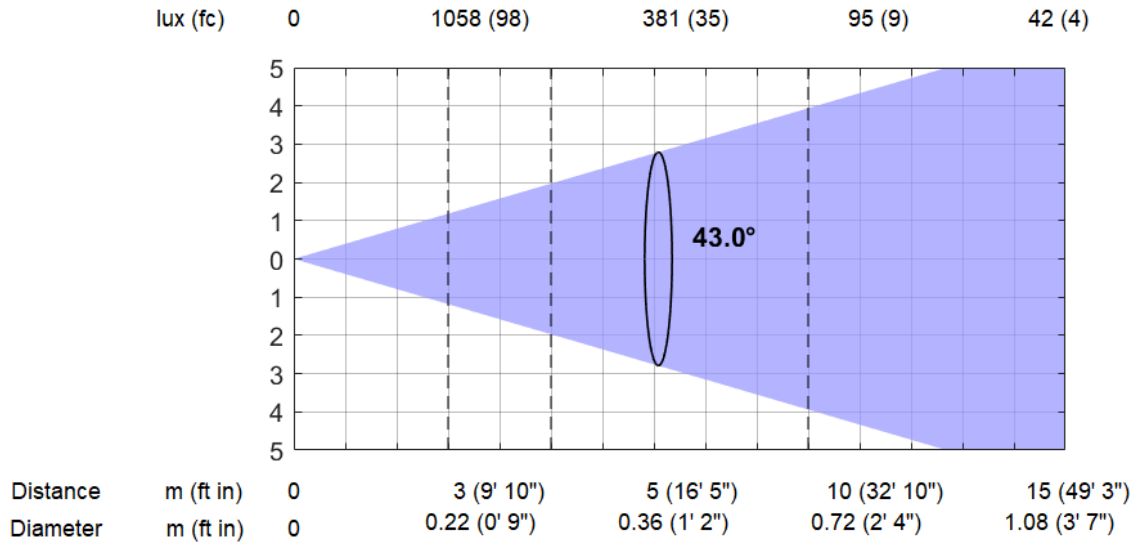


*Lumen values detected with integrating sphere. Measurements taken 15 minutes after the fixture was turned on.

MAXIMUM ZOOM: FAN MODE SILENT

SLN fan mode (43°)

Total Output: 3328 lumens

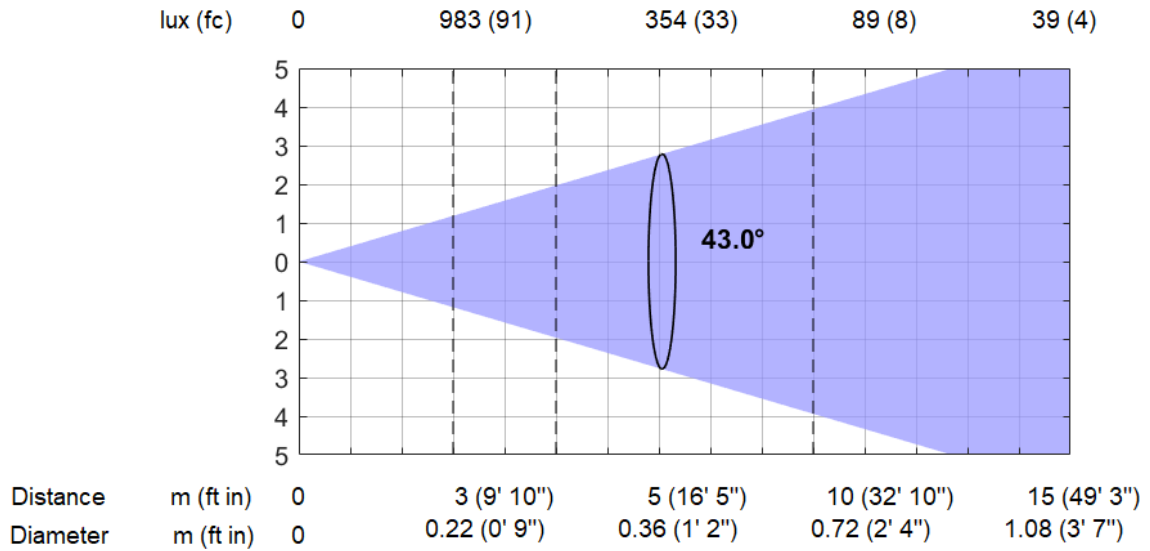


*Lumen values detected with integrating sphere. Measurements taken 15 minutes after the fixture was turned on.

MAXIMUM ZOOM: FAN MODE THEATRE

THEATRE fan mode (43°)

Total Output: 3085 lumens

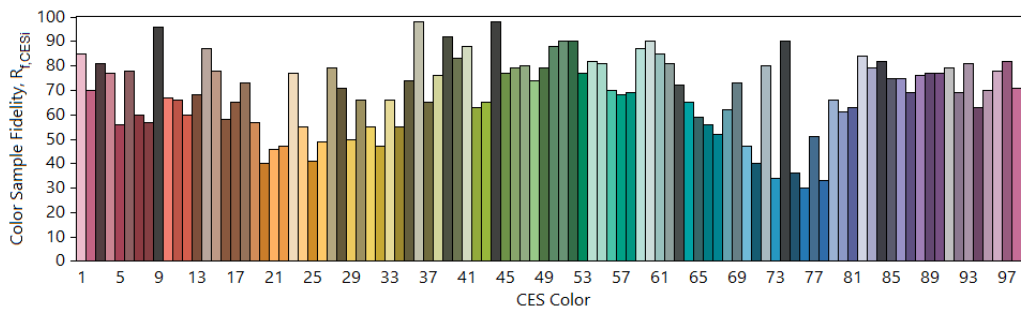
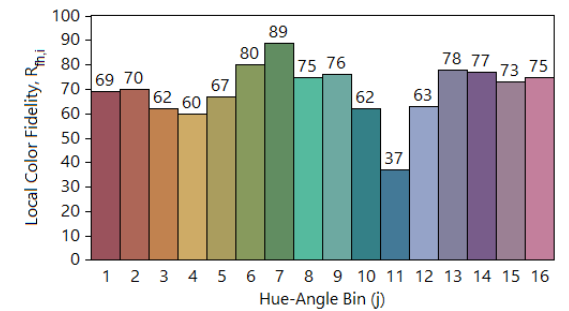
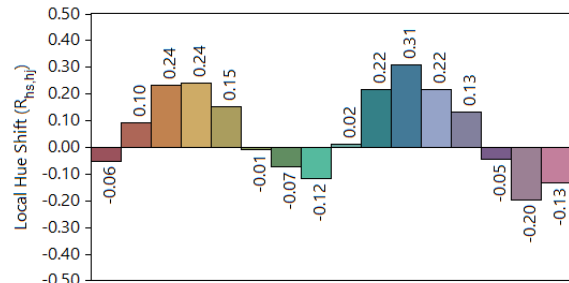
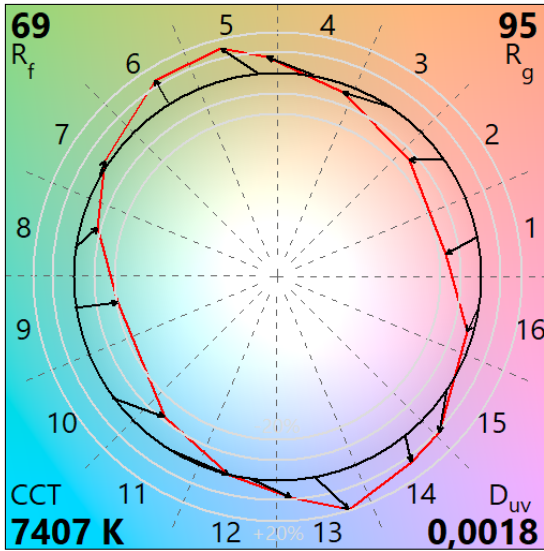
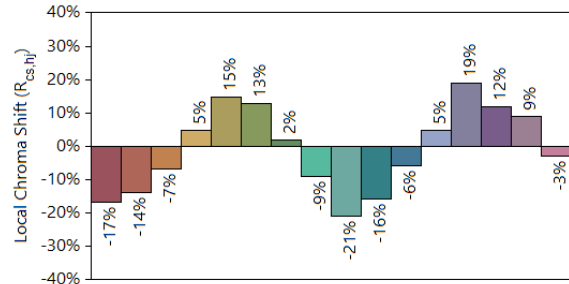
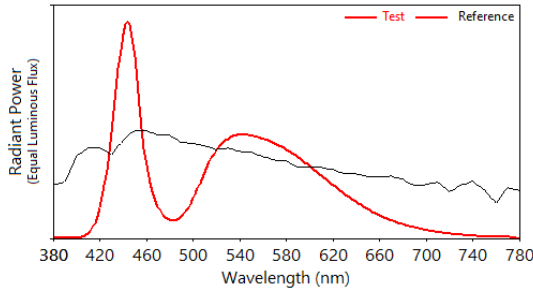


*Lumen values detected with integrating sphere. Measurements taken 15 minutes after the fixture was turned on.

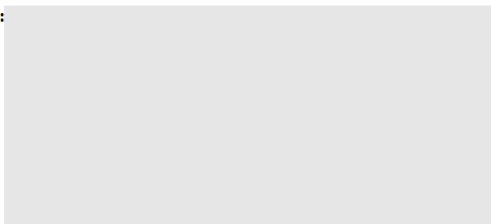
TM-30: 7500K

IES TM-30-18 Color Rendition Report

Source: Manufacturer: CLAY PAKY
 Date: 07.12.2022 Model: MINI B SPOT



Notes:



x 0,3007
 y 0,3141
 u' 0,1950
 v' 0,4583

CIE 13.3-1995
 (CRI)
 R_a 69
 R_g -24

Colors are for visual orientation purposes only.