



# PRODUCT CATALOGUE

2023

DESIGNED & ENGINEERED IN GERMANY  
[cameolight.com](https://cameolight.com)



Cameo<sup>®</sup> is a registered brand of the Adam Hall Group.



**SOUND**  
TECHNOLOGY

**LIGHT**  
TECHNOLOGY

**STAGE**  
EQUIPMENT

**HARDWARE**  
FOR FLIGHTCASES

ADAM HALL GROUP BRANDS



**LOCATION:**

BUCKINGHAM PALACE  
(THE QUEENS JUBILEE)  
LONDON (UNITED KINGDOM)

**PRODUCTS USED:**

ZENIT® W600 + FLAT PRO G2 (+600 UNITS)  
OTOS® H5 (+62 UNITS)

**Cameo® – For Lumen Beings**

Touting its claim “for lumen beings”, the Cameo® brand expresses the fascination with lighting among light designers and light technicians, and their audiences.

Designed and engineered using advanced technologies, Cameo’s LED lighting products are smart, durable and energy-efficient. Equipped with all the right features and offering a wide-spanning portfolio, including PAR spotlights, moving heads, lighting effects, lasers, LED strips, DMX controllers and special accessories, Cameo supports infinite ideas in creative lighting design — whether it be inside or outside, in large-scale rigs at concerts and event locations, in smaller venues and clubs, in the studio, or for integrated fixed installations, all the way to special architectural projects.

**cameolight.com**

Cameo® is a registered brand of the Adam Hall Group.



[facebook.com/cameo.lighting](https://facebook.com/cameo.lighting)  
[youtube.com/cameolightandsound](https://youtube.com/cameolightandsound)  
[blog.adamhall.com](https://blog.adamhall.com)



# CHAPTER ONE

# ENTERTAINMENT

# LIGHTS

## CHAPTER ONE ENTERTAINMENT LIGHTS

OUTDOOR MOVING HEADS	6
INDOOR MOVING HEADS	14
OUTDOOR STATIC LIGHTS	42
INDOOR STATIC LIGHTS	70
LASERS	112
EFFECTS	122

## CHAPTER TWO ARCHITECTURAL LIGHTS

OUTDOOR LIGHTS	136
INDOOR LIGHTS	144

## CHAPTER THREE TOOLS

LIGHTING TOOLS	152
----------------	-----

ICON LEGEND / REGISTER	166
------------------------	-----

# OUTDOOR MOVING HEAD



**LOCATION:**

AIDA COSMA CRUISE SHIP  
HAMBURG (GERMANY)

**PRODUCTS USED:**

OTOS® H5 (136 UNITS)





**NEW**

OUTDOOR MOVING HEAD | 

# OTOS® B5

## IP65 BEAM MOVING HEAD

- ▶ IP65 rated beam moving head with 480 W discharge lamp
- ▶ 11,500 lux @100 m, 511,000 lux @15 m
- ▶ High quality optics with 205 mm front lens
- ▶ Continuous CMY colour mixing + 14 dichroic filters for saturated colours and whites
- ▶ Particularly narrow beam angle of 1°
- ▶ Static gobo wheel with 19 gobos + open
- ▶ 3 rotatable and indexable prisms on two levels (overlapping)
- ▶ Easy handling and low weight (33 kg)
- ▶ Flexible control options via integrated W-DMX™ transceiver, DMX and RDM



FOR MORE INFORMATION AND ACCESSORIES  
PLEASE SCAN THE QR-CODES

CLOTOSB5





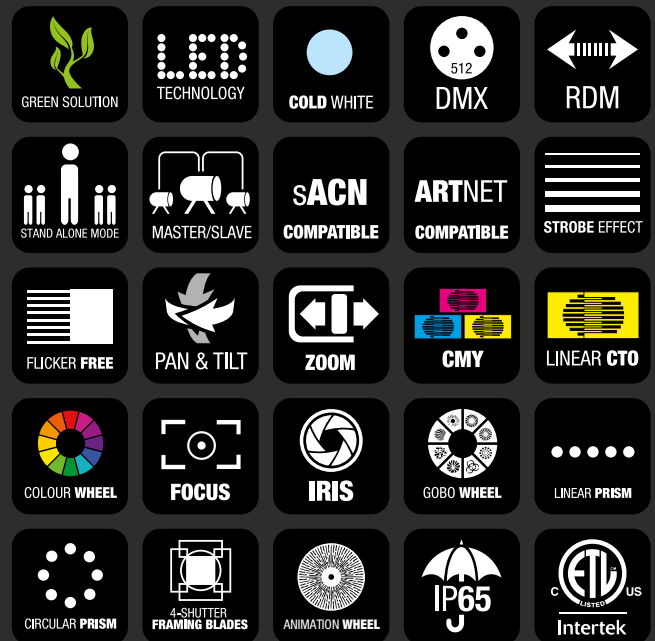
**NEW**

OUTDOOR MOVING HEAD | 

# OTOS<sup>®</sup> SP6

## IP65 SPOT PROFILE MOVING HEAD

- ▶ IP65 Spot Profile Moving Head with 600 W LED and 75.800 lux at 7° beam angle
- ▶ High-quality optics with 130 mm front lens and large 7°-50° zoom
- ▶ Uniform projection without hotspots throughout the zoom range
- ▶ CMY colour mixing and additional colour wheel with 6 dichroic filters + open
- ▶ Rotating gobo wheel with 7 indexable/rotatable, exchangeable glass gobos + open
- ▶ Static gobo wheel with 7 interchangeable glass gobos + open
- ▶ 4-blade framing system with +/- 45° rotation
- ▶ Linear CTO correction (2,600 K - 7,000 K)
- ▶ Selectable pulse width modulation (up to 25 kHz) for flicker-free operation
- ▶ Flexible control options: DMX, RDM, Art-Net, sACN, W-DMX, CRMX
- ▶ Easy handling and low weight (34 kg)
- ▶ Supplied in matching flight case insert



FOR MORE INFORMATION AND ACCESSORIES  
PLEASE SCAN THE QR-CODES

CLOT0SSP6





# OTOS® H5

## IP65 BEAM SPOT WASH HYBRID MOVING HEAD

- ▶ IP65 rated beam spot wash hybrid moving head with 19,000 lm luminous flux
- ▶ Continuously adjustable CMY colour mixing in addition to 15 dichroic filters for saturated colours and white tones
- ▶ High-quality optics with 135- mm front lens and especially wide zoom range of 2° to 42°
- ▶ Rotating gobo wheel with 8 indexable and rotatable replaceable glass gobos + open
- ▶ Static gobo wheel with 19 gobos + open
- ▶ 2 rotatable and indexable prisms for varied mid-air effects
- ▶ High CRI filter (>80) for enhanced colour reproduction and adaptation to TV and film cameras
- ▶ Variable frost filter for use as a wash light
- ▶ Flexible control options via a built-in W-DMX™ transceiver, DMX and RDM



FOR MORE INFORMATION AND ACCESSORIES  
PLEASE SCAN THE QR-CODES

CLOTOSH5



# INDOOR MOVING HEAD

A large indoor arena, likely a velodrome, is shown from an elevated perspective. The scene is dominated by vibrant blue and purple lighting. Several bright beams of light from moving head fixtures illuminate the track and the surrounding areas. In the foreground, a track with a large white graphic is visible. In the background, a crowd of people is gathered, and various banners and logos are visible along the perimeter. The overall atmosphere is dynamic and high-tech.



**LOCATION:**

110. SIX DAY BERLIN  
BERLIN (GERMANY)

**PRODUCTS USED:**

OPUS® H5 (70 UNITS)  
OPUS® S5 (24 UNITS)  
OTOS® H5 (12 UNITS)  
ZENIT® W600-D (116 UNITS)  
ZENIT® W600 (20 UNITS)  
ZENIT® B200 (24 UNITS)  
ZENIT® B60 C LSD (36 UNITS)

**OPUS® SP5**



**NEW**

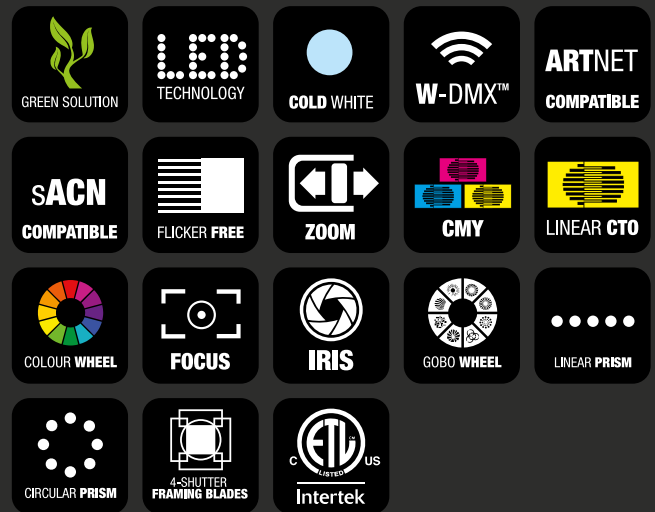


**OPUS® SP5+**

# OPUS<sup>®</sup> SP5 / SP5+

## PROFILE MOVING HEADS

- ▶ Efficient LED engines offering 15,000 lumen output and up to 22,000 with the PLUS version
- ▶ High-quality optics with a 130 mm front lens and an extra wide 6° - 42° zoom range
- ▶ 2 Gobo wheels (7x rotating & 8x static), 3-facet circular prism, 6-facet linear prism
- ▶ Framing shutter module replaceable by Animation wheel module (available as an accessory)
- ▶ Flexible control via built-in W-DMX<sup>™</sup> Transceiver, DMX, RDM, Art-Net, or sACN.



FOR MORE INFORMATION AND ACCESSORIES  
PLEASE SCAN THE QR-CODES

CLOSP5P



CLOSP5PLUS



ACCESSORIES





# OPUS<sup>®</sup> SP5 FC

## PROFILE SPOT MOVING HEAD

- ▶ Profile Spot Moving Head with 300 W Full Colour RGBAL-LED
- ▶ Display the complete colour spectrum with CRI >90 and TLCI 93
- ▶ High-quality optic with especially long zoom range of 6° to 44°
- ▶ Even projection without colour shadows
- ▶ Fourfold diaphragm slider system with +/- 45° rotation
- ▶ Angle and position of each diaphragm slider adjustable up to complete closure
- ▶ Rotatable animation wheel
- ▶ Rotating gobo wheel with 6 indexable and rotatable replaceable glass gobos plus open
- ▶ Static gobo wheel with 7 replaceable glass gobos plus open
- ▶ Rotatable and indexable circular threefold prism and linear sixfold prism
- ▶ Variable frost filter for washlight effects and continuously variable iris diaphragm



FOR MORE INFORMATION AND ACCESSORIES  
PLEASE SCAN THE QR-CODES

CLOSP5FC

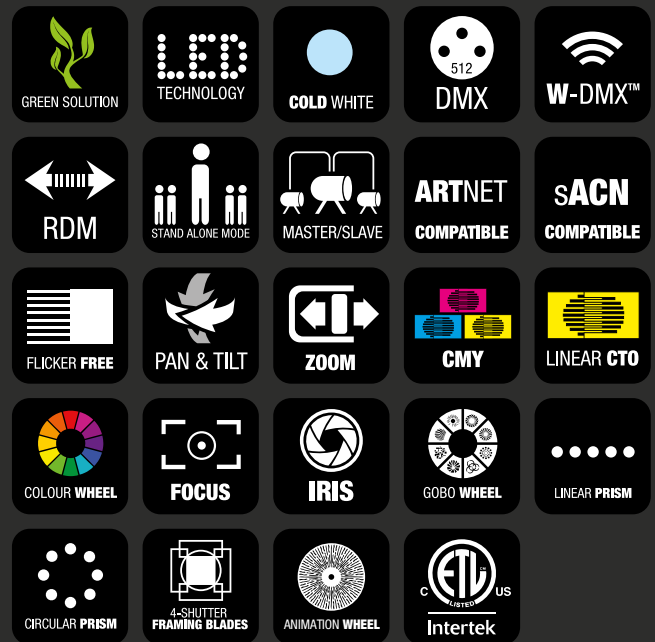




# OPUS<sup>®</sup> X PROFILE

## HIGH-POWER PROFILE MOVING HEAD

- ▶ High-power profile moving head with 33,000 lm / 72,000 lux (@ 5 m)
- ▶ CMY colour blending and additional colour wheel with 6 dichroic filters
- ▶ High-quality optics with 170-mm front lens and extremely wide zoom range of 6° to 48°
- ▶ Angle and position of each diaphragm slider adjustable to complete closure
- ▶ Rotatable animation wheel, rotating gobo wheel and static gobo wheel
- ▶ Rotatable and indexable circular fivefold prism and linear sixfold prism
- ▶ Variable frost filter for wash light effects and continuously adjustable iris
- ▶ Smooth dimming with 16-bit resolution and 4 selectable curves
- ▶ Battery-powered touchscreen display with rotary encoder
- ▶ Flexible control via built-in W-DMX<sup>™</sup> transceiver, DMX, RDM, Art-Net or sACN



FOR MORE INFORMATION AND ACCESSORIES  
PLEASE SCAN THE QR-CODES

CLOXP

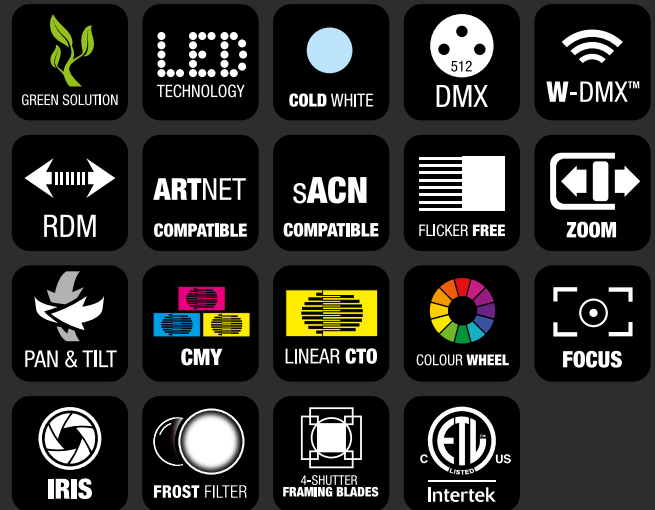




# OPUS® W5

## WASH MOVING HEAD

- ▶ Wash Moving Head with 15,400 lm
- ▶ CMY color mixing and 2 additional color wheels, each with 7 dichroic filters
- ▶ Linear CTO correction from 6,500 - 2,600 K
- ▶ High-quality optics with 170 mm PC lens and extremely wide zoom range from 6° - 48°
- ▶ Even and flat projection field without hot spots at any zoom angle
- ▶ 4-blade framing system with +/- 45° rotation, individually controllable up to full blackout
- ▶ Variable frost plus stepless iris
- ▶ Flicker-free operation thanks to selectable PWM frequencies up to 25 kHz
- ▶ Battery powered touchscreen display plus 6 touch buttons for offline configuration
- ▶ Flexible control via built-in W-DMX™ Transceiver, DMX, RDM, Art-Net or sACN



FOR MORE INFORMATION AND ACCESSORIES  
PLEASE SCAN THE QR-CODES

CLOW5





# OPUS<sup>®</sup> X WASH

## HIGH-POWER WASH MOVING HEAD

- ▶ High-power wash moving head with 32,000 lm
- ▶ CMY color blending and 2 additional color wheels, each with 6 dichroic filters
- ▶ Linear CTO correction to 2,600 K
- ▶ High-quality optics with 170 mm PC lens and extremely wide zoom range from 5°-46°
- ▶ Even and flat projection field without hot spots at any zoom angle
- ▶ 4-blade framing system with +/- 45° rotation, individually controllable up to full blackout
- ▶ Variable frost plus stepless iris
- ▶ Flicker-free operation thanks to selectable PWM frequencies up to 25 kHz
- ▶ Battery-powered touchscreen display with encoder wheel for offline configuration
- ▶ Flexible control via built-in W-DMX<sup>™</sup> Transceiver, DMX, RDM, Art-Net or sACN



FOR MORE INFORMATION AND ACCESSORIES  
PLEASE SCAN THE QR-CODES

CLOXW





# OPUS<sup>®</sup> H5

## BEAM SPOT WASH HYBRID MOVING HEAD

- ▶ Extremely flexible beam spot wash hybrid moving head with 18,000 lm / 407,000 lux at 10 m
- ▶ CMY colour blending and additional colour wheel with 13 dichroic filters
- ▶ High-quality optics with 130-mm front lens and especially wide zoom range of 2° to 42°
- ▶ A total of five prisms at two levels for varied mid-air effects
- ▶ High CRI filter (>85) for enhanced colour reproduction and adaptation to TV and film cameras
- ▶ Nine interchangeable, rotating gobos and 13 static gobos
- ▶ Smooth dimming with 16-bit resolution and 4 selectable curves
- ▶ Battery-operated touchscreen display with push encoder for quick and simple set-up
- ▶ Flexible control via built-in W-DMX<sup>™</sup> transreceiver, DMX, RDM, Art-Net or sACN
- ▶ Osram lamp Sirius HRI 470 W, two Omega brackets and power cable included



FOR MORE INFORMATION AND ACCESSORIES  
PLEASE SCAN THE QR-CODES

CLOH5



**EVOS® W7**



**NEW**



**EVOS® W7 IP**

# EVOS® W7 SERIES

## LED WASH-MOVING HEADS

- ▶ Indoor (W7) and IP65-rated outdoor (W7 IP) Wash Moving Heads
- ▶ 12,500 lm luminous flux and a light intensity of 96,000 lx @ 1 m
- ▶ 19 full-colour 40 W RGBW LEDs with precise colour reproduction with CRI > Ra 90 and individual control of all LEDs (Single Pixel Control)
- ▶ Zoom range of 4.5° to 34° (beam) / 7° to 55° (field)
- ▶ Includes Beam Shaper for asymmetrical beams
- ▶ Control via DMX, RDM Art-Net3, sACN or KlingNet



FOR MORE INFORMATION AND ACCESSORIES  
PLEASE SCAN THE QR-CODES

CLEW7IP



CLEW7



ACCESSORIES





# EVOS® W3

## LED WASH-MOVING HEADS

- ▶ LED wash fixture moving head with 4,100 lm luminous flux
- ▶ 53,000 lx illuminance at a distance of 3 m
- ▶ Full color LED with additional warm white chip
- ▶ Ideally suited for illumination thanks to high CRI > 90 at 3,200 K
- ▶ All LEDs individually controllable (pixel mapping capability) for matrix effects
- ▶ Large 4.5° to 55° zoom range
- ▶ Adjustable refresh rate for flicker-free camera imagery
- ▶ DMX, RDM, Art-Net3, sACN, KlingNet, or W-DMX control possible



FOR MORE INFORMATION AND ACCESSORIES  
PLEASE SCAN THE QR-CODES

CLEW3



ACCESSORIES





**NEW**

INDOOR MOVING HEAD | 

# AZOR<sup>®</sup> S2

## COMPACT SPOT MOVING HEAD

- ▶ Compact spot moving head
- ▶ 300 W LED illuminant with 13,000 lm luminous flux
- ▶ Zoom range: 5° - 50
- ▶ CMY colour mixing
- ▶ Additional colour wheel with 8 dichroic colour filters
- ▶ Rotating gobo wheel with 8 indexable/rotatable, exchangeable glass gobos + open
- ▶ Static gobo wheel with 11 gobos + open
- ▶ Selectable PWM frequencies up to 25 kHz for flicker-free operation



FOR MORE INFORMATION AND ACCESSORIES  
PLEASE SCAN THE QR-CODES

CLAZORS2



ACCESSORIES





# AZOR® B1

## LED BEAM MOVING HEAD

- ▶ Beam Moving Head with 180,000 lx light intensity @ 3 m
- ▶ Optical glass lens with extremely narrow 2° beam angle
- ▶ 16-bit three-phase motors
- ▶ 540° panning and 270° tilting with automated position correction.
- ▶ Motorised focusing
- ▶ 14 colours plus open and split colours
- ▶ 17 static gobos plus open
- ▶ Rotatable and indexable circular eightfold prism
- ▶ Rotatable and indexable linear sixfold prism
- ▶ 4 programmable macros for standalone and master-slave operation
- ▶ 3-pin & 5-pin DMX sockets and Power Twist power in and power out sockets



FOR MORE INFORMATION AND ACCESSORIES  
PLEASE SCAN THE QR-CODES

CLAB1



ACCESSORIES





**AURO® SPOT 200**



**AURO® SPOT Z300**

# AURO<sup>®</sup> SERIES

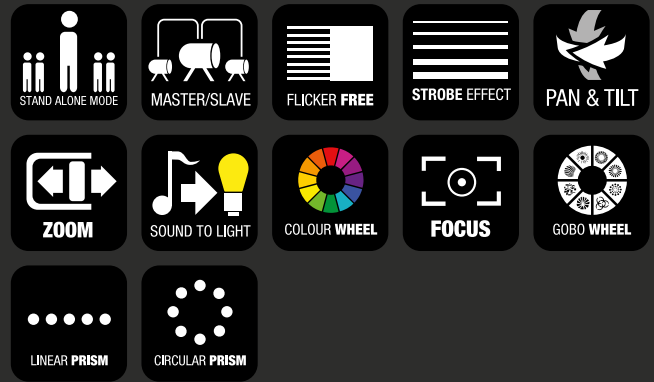
## SPOT MOVING HEADS

### AURO<sup>®</sup> SPOT Z300 CLASZ300

- ▶ Compact spot moving head with 7,500 lm luminous flux and 10° to 25° zoom range
- ▶ Automatic position correction + motorized focus for accurate and easy positioning
- ▶ 2 gobo wheels with 6 rotating gobos (indexable and exchangeable) and 6 fixed gobos + open for versatile projection options

### AURO<sup>®</sup> SPOT 200 CLAS200

- ▶ RDM enabled moving head with advanced remote device management capabilities.
- ▶ Powerful illumination with 130,000 lx @ 1m for bright and dynamic lighting effects.
- ▶ High speed 3-phase motors and 16-bit resolution for precise and smooth movement



FOR MORE INFORMATION AND ACCESSORIES  
PLEASE SCAN THE QR-CODES

CLAS200



CLASZ300



ACCESSORIES





**MOVObeam® BEAM 100**



**MOVObeam® BEAM Z100**

# MOVO® SERIES

## ENDLESS ROTATION BEAM MOVING HEADS

- ▶ Ultra-bright 60 W Osram RGBW LED for saturated primary colours, subtle pastel hues and natural shades of white
- ▶ The zoom version offers a motor zoom with 4° - 30° range
- ▶ Individually controllable 4-segment RGB LED surround with single pixel control
- ▶ 2 high-speed motors for ultra-fast continuous pan and tilt
- ▶ Fantastic automated modes
- ▶ 4 selectable dimming curves
- ▶ 4 DMX modes and standalone, master or slave operation
- ▶ 2.5" TFT display and touch sensitive buttons for intuitive configuration
- ▶ Omega mounting bracket included



FOR MORE INFORMATION AND ACCESSORIES  
PLEASE SCAN THE QR-CODES

CLMB100



CLMBZ100



ACCESSORIES

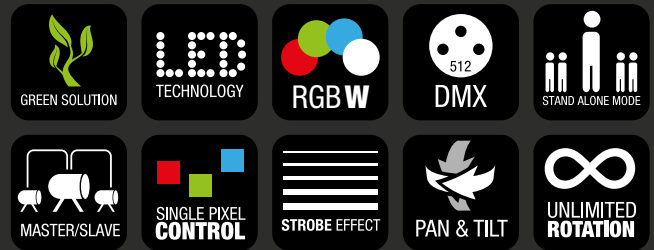




# MOVO<sup>®</sup> BEAM 200

## ENDLESS ROTATION BEAM MOVING HEAD

- ▶ Ultra-bright 60 W OSRAM RGBW LED with 1.200 lm
- ▶ Individually controllable 24-segment LED ring
- ▶ Two high-speed, high torque motors for ultra-fast endless pan and tilt
- ▶ Extremely narrow 2° beam angle
- ▶ Dramatic, automated operating modes
- ▶ 4 selectable dimming curves
- ▶ 7 DMX modes, standalone or master/slave operation
- ▶ Backlight LCD display and encoder wheel for quick and simple set-up
- ▶ Omega bracket for versatile mounting included



FOR MORE INFORMATION AND ACCESSORIES  
PLEASE SCAN THE QR-CODES

CLMB200



# OUTDOOR STATIC LIGHTS





**LOCATION:**

THE FLYING DUTCHMAN  
KLAIPĖDA STATE MUSIC THEATRE  
(LITHUANIA)

**PRODUCTS USED:**

OPUS® X PROFILE (38 UNITS)

OPUS® H5 (32 UNITS)

ZENIT® W600 SMD (32 UNITS)

ZENIT® W300 (40 UNITS)

ZENIT® P130 (60 UNITS)



**ZENIT® W300**



**ZENIT® W600**



reddot award 2019  
winner lighting design



OPERABLE  
WITH  
**UNICON®**

OUTDOOR STATIC LIGHTS | 

# ZENIT® W600 / W300

## OUTDOOR LED WASH LIGHT FOR FIXED INSTALLATION

WIRELESS SOLUTION  
MADE IN SWEDEN



- ▶ 40 x 15 W RGBW LEDs with 21,000 lm total output for uniform and powerful colour mixing (W600)
- ▶ 21 x 15 W RGBW LEDs with 10,000 lm total output for uniform and powerful colour mixing (W300)
- ▶ Optional SnapMag® filter frames for 25°, 45°, 100° or elliptical 60° x 10° beam angle selection and installation without tools or dismantling
- ▶ Built-in 2.4 GHz W-DMX™ transceiver
- ▶ Wireless master-and-slave function
- ▶ W-DMX™, RDM, DMX or IR control plus standalone modes with automated programs
- ▶ IP65 rating for outdoor use
- ▶ Temperature controlled fans for optimized operation and low noise
- ▶ 16-bit technology for high-resolution colours and dimming



FOR MORE INFORMATION AND ACCESSORIES  
PLEASE SCAN THE QR-CODES

CLZW600



CLZW300



ACCESSORIES





**ZENIT® W600-D**



**ZENIT® W600 TW**

OPERABLE  
WITH  
**UNICON®**

OUTDOOR STATIC LIGHTS | 

# ZENIT® W600-D / W600 TW

OUTDOOR LED WASH LIGHT FOR FIXED INSTALLATION

WIRELESS SOLUTION  
MADE IN SWEDEN



- ▶ 40 x 18W white CREE LEDs with 41,000 lm total output for extreme brightness
- ▶ 40 x 12 W CW/WW LEDs with 31,000 lm luminous flux for intensive "Tunable White" mix
- ▶ 5,600 K colour temperature and CRI 90 for accurate, natural colour rendering (Daylight version)
- ▶ Optional SnapMag® filter frames for 25°, 45°, 100° or elliptical 60° x 10° beam angle selection and installation without tools or dismantling
- ▶ Integrated 2.4 GHz W-DMX™ transceiver
- ▶ Wireless master-and-slave function
- ▶ IP65 rating for permanent outdoor use
- ▶ Temperature controlled fans for optimized operation and low noise
- ▶ 16-bit technology for high-resolution dimming
- ▶ Colour temperature from 2,600 K to 6,500 K (Daylight version)



FOR MORE INFORMATION AND ACCESSORIES  
PLEASE SCAN THE QR-CODES

CLZW600-D



CLZW600TW



ACCESSORIES





**ZENIT® W600 SMD**



**ZENIT® W600 D-SMD**

OPERABLE  
WITH  
**UNICON®**

OUTDOOR STATIC LIGHTS | 

# ZENIT® W600 (D) SMD

## OUTDOOR LED WASH LIGHT FOR FIXED INSTALLATION

WIRELESS SOLUTION  
MADE IN SWEDEN



- ▶ 576 Daylight SMD LEDs and extreme brightness up to 90,000 lm for the D-SMD version
- ▶ 504 SMD 4-in-1 LEDs and extreme brightness up to 41,000 lm for the SMD version
- ▶ Precise and high-resolution colours, as well as mixed colours in the RGBW spectrum (SMD)
- ▶ 12 (SMD) or 48 (D-SMD) individually controllable segments
- ▶ Boost in blinder mode for temporarily increased output
- ▶ IP65 rated for permanent outdoor use
- ▶ High-resolution dimmer response thanks to 16-bit technology
- ▶ 2,700 - 6,500 K colour temperature and CRI 85 for uncompromised colour reproduction (SMD)
- ▶ 5,700 K colour temperature and CRI (D-SMD)
- ▶ Integrated 2.4 GHz W-DMX™ transceiver
- ▶ Control via W-DMX™, DMX and RDM (via DMX and W-DMX™)
- ▶ Temperature-controlled fans for optimised low-noise operation



FOR MORE INFORMATION AND ACCESSORIES  
PLEASE SCAN THE QR-CODES

CLZW600SMD



CLZW600DSMD



ACCESSORIES





**ZENIT® Z120 G2**



**ZENIT® Z180 G2**

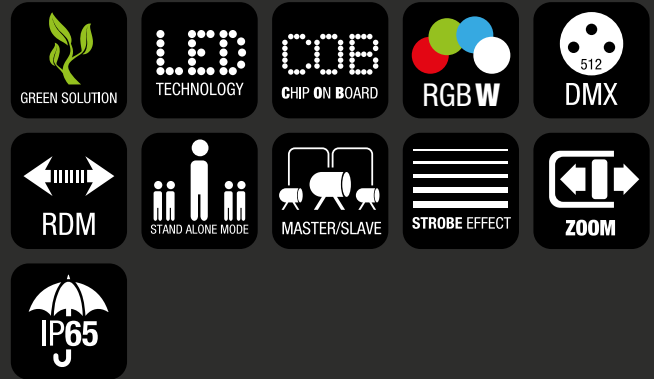
OPERABLE  
WITH  
**UNICON®**

OUTDOOR STATIC LIGHTS | 

# ZENIT® Z120 / Z180 G2

## OUTDOOR LED WASH LIGHT FOR FIXED INSTALLATION

- ▶ Professional high output PAR can with 7° - 55° (Z120) zoom or with 10–40° zoom (Z180)
- ▶ Fast, flexible mounting options via patented SPIN16® technology, featuring a mounting bracket with an integrated 16-mm TV spigot
- ▶ 120 W or 180 W RGBW COB LED
- ▶ High resolution 16-bit colour mixing and dimming
- ▶ Colour temperature correction
- ▶ Variable white balance
- ▶ 4 selectable dimming curves with adjustable response
- ▶ Security lock against unauthorized menu access
- ▶ RDM enabled
- ▶ Flicker free, ideal for TV and film applications
- ▶ IP65 rating for outdoor use
- ▶ 5-pin DMX sockets and IP65-rated powerCON TRUE1-compatible power sockets
- ▶ Optional Cameo Omega Bracket (CLOMEGABRACKET1) available as accessory



FOR MORE INFORMATION AND ACCESSORIES  
PLEASE SCAN THE QR-CODES

CLZZ120G2



CLZZ180G2



ACCESSORIES





OPERABLE  
WITH  
**UNICON®**

OUTDOOR STATIC LIGHTS | 

# ZENIT® P130 LSD

**OSRAM**  
LED TECHNOLOGY INCLUDED

PROFESSIONAL OUTDOOR PAR CAN IP65 WITH INNOVATIVE LIGHT SHAPING DIFFUSORS

- ▶ Professional IP65 outdoor PAR can with 4 x 32 W RGBW Osram OSTAR LEDs and 8° beam angle
- ▶ Includes 2 innovative light shaping diffusers for beam angles of 25° or 45° while maintaining transmission efficiency
- ▶ RDM capability
- ▶ 16-bit technology for high-resolution Colours and dimming
- ▶ Flicker free, ideal for motion picture and TV applications
- ▶ Colour temperature and individual LED Colour correction
- ▶ 4 ultra smooth dimming curves and adjustable halogen lamp-like dimming response
- ▶ 7 modes of DMX control plus master, slave and standalone capability
- ▶ OLED display with 4 touch buttons for easy configuration
- ▶ Security lock against unauthorized menu access
- ▶ Convection cooling for noise-free performance



FOR MORE INFORMATION AND ACCESSORIES  
PLEASE SCAN THE QR-CODES

CLZP130LSD



ACCESSORIES





**ZENIT® B60 C LSD**



**ZENIT® B60 B LSD**

OPERABLE  
WITH  
**UNICON®**

OUTDOOR STATIC LIGHTS | 

# ZENIT® B60 (B/C) LSD

BATTERY-POWERED W-DMX™ IP65 PAR LIGHT - BLACK / CHROME HOUSING

- ▶ Battery-powered W-DMX™ PAR spotlights with IP65 protection rating
- ▶ 4 x 15 W RGBW LEDs with 1,900 lm total output for uniform colour mixing
- ▶ Long-life, powerful lithium-ion battery for reliable operation
- ▶ Battery management system prevents overcharging and exhaustive discharge
- ▶ Built-in 2.4 GHz W-DMX™ receiver
- ▶ Wireless DMX, standard DMX, RDM and IR control or via the four touch buttons display
- ▶ Includes two light shaping diffusers for flexible 11°, 25° or 40° beam spread options, elliptical diffuser 60° x 10° available as accessory
- ▶ 16-bit technology for high-resolution colours and dimming
- ▶ OLED display with four touch buttons for easy configuration
- ▶ Security lock against unauthorized menu access



FOR MORE INFORMATION AND ACCESSORIES  
PLEASE SCAN THE QR-CODES

CLZB60BLSLSD



CLZB60CLSLSLSD



ACCESSORIES





reddot award 2019  
winner lighting design



OPERABLE  
WITH  
**UNICON®**

OUTDOOR STATIC LIGHTS | 

# ZENIT® B200

## BATTERY POWERED OUTDOOR WASH LIGHT

WIRELESS SOLUTION  
MADE IN SWEDEN



- ▶ 21 x 15 W RGBW LEDs with 6,600 lm total output for uniform colour mixes
- ▶ Long-life super capacity lithium-ion battery for reliable operation
- ▶ Battery Management System prevents overcharging and exhaustive discharge
- ▶ 21° beam and 40° field angles without diffuser
- ▶ Optional SnapMag® filter frames for 25°, 45°, 100° or elliptical 60° x 10° beam angle selection and installation without tools or dismantling
- ▶ Built-in 2.4 GHz W-DMX™ transceiver
- ▶ Wireless master and slave operation
- ▶ W-DMX™, RDM, DMX or IR control plus standalone modes with automated programs



FOR MORE INFORMATION AND ACCESSORIES  
PLEASE SCAN THE QR-CODES

CLZB200



ACCESSORIES





reddot winner 2023



**S4 IP**

**NEW**

**S2 IP**

OPERABLE  
WITH  
**UNICON®**

OUTDOOR STATIC LIGHTS | 

# S SERIES

## LED SOFTLIGHT PANELS - IP65

- ▶ 544 (S4 IP), 272 (S2 IP) single SMD LEDs per colour (RGBWW) in 4-cluster arrangement
- ▶ Enables outdoor use thanks to IP65 classification
- ▶ Adjustable temperature range from 1,800 - 10,000 Kelvin
- ▶ Adjustable PWM frequency for flicker-free operation
- ▶ Manual operation on the unit or via EZRemote with the optional UNICON® (CLIREMOTE)
- ▶ Control options via DMX, W-DMX, ArtNet, sACN & RDM
- ▶ Ergonomic handles and recessed controls for safe handling
- ▶ High colour rendering values (CRI 95, TLCI 91), plus 85% coverage of Rec. 2020 colour space
- ▶ Optional dark filter integrates the panel into any scenery
- ▶ Numerous accessory options such as Honey Combs, Intensifier, Barndoor and many more.



FOR MORE INFORMATION AND ACCESSORIES  
PLEASE SCAN THE QR-CODES

CLS2IP

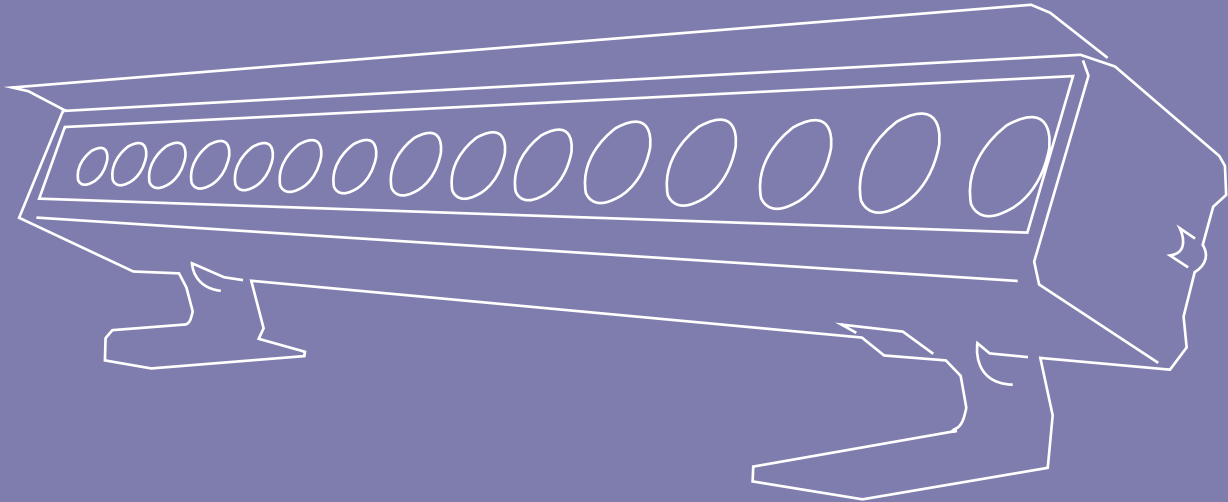


CLS4IP



ACCESSORIES





G2  
**COMING  
SOON**

OUTDOOR STATIC LIGHTS | 

# PIXBAR® G2

IP65 LED BARS

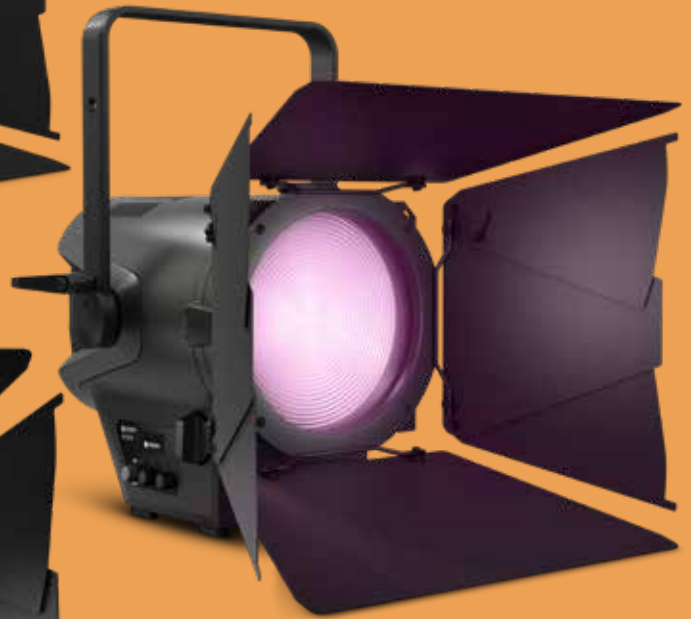
---

- ▶ 4 different models with RGBW, RGBWAUV, Tunable White and SMD LED
- ▶ Simple and efficient interconnection from up to 3 Units
- ▶ Slideable feet for Truss-Bracing positioning
- ▶ Combined Hanging and Standing Mount Plate
- ▶ Easy Slip Filter Access
- ▶ Fanless Cooling Design
- ▶ High Brightness
- ▶ SPIN16® Included

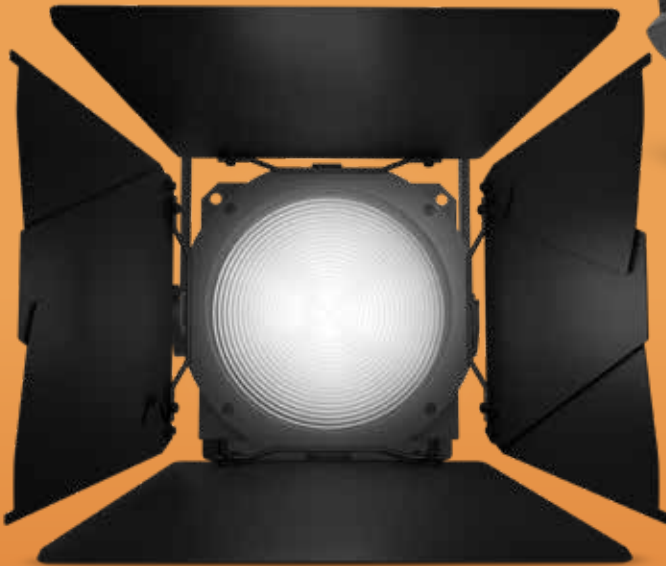
**Note: The values given are preliminary**



**F2 T IP**



**F2 FC IP**



**F2 D IP**

**NEW**

OUTDOOR STATIC LIGHTS | 

# F2 IP SERIES

## PROFESSIONAL ZOOM PAR IP65

- ▶ Outdoor applications possible thanks to IP65 classification
- ▶ True-to-life colour rendering, CRI 96, TLCI 97
- ▶ Stepless zoom for beam angles from 15° to 40°
- ▶ 4 selectable 16-bit dimmer curves with adjustable response behaviour
- ▶ Flicker-free and low-noise operation, ideal for TV, film and theatre



FOR MORE INFORMATION AND ACCESSORIES  
PLEASE SCAN THE QR-CODES

CLF2DIP



CLF2FCIP



CLF2TIP



ACCESSORIES



**F4 D P0 IP**



**F4 FC P0 IP**



**F4 T P0 IP**

# F4 PO IP SERIES

## PROFESSIONAL ZOOM PAR IP65

- ▶ Fresnel spotlight with Daylight, Full Colour and Tungsten LED
- ▶ Infinitely variable color temperature adjustment (1,600-6,500 K) (Full Colour version)
- ▶ IP65-certified for permanent outdoor use
- ▶ Pole-operated for efficient use in different environments (TV studios, etc.)
- ▶ Natural color reproduction (CRI > 90) (Full Colour version)
- ▶ Continuous zoom range from 14° to 43 or 52°, depending on model
- ▶ Flicker-free camera images thanks to selectable pulse width modulation frequencies up to 25 kHz
- ▶ Selectable 16-bit dimmer curves for smooth dimming
- ▶ 8-way barn door and color filter frame included
- ▶ Highly efficient cooling system and silent mode for noise-free operation



FOR MORE INFORMATION AND ACCESSORIES  
PLEASE SCAN THE QR-CODES

CLF4DP0IP



CLF4FCP0IP



CLF4TP0IP



ACCESSORIES





**FLAT PRO® 7 G2**



**FLAT PRO® 12 G2**



**FLAT PRO® 18 G2**

# FLAT PRO G2

## RGBWA LED OUTDOOR SPOTLIGHTS

- ▶ 7 x 10 W / 12 x 10 W / 18 x 10 W 5-in-1 RGBWA LEDs, depending on product
- ▶ IP-65 certified for permanent outdoor use
- ▶ Noiseless & flicker-free operation for theatres, broadcasting & film
- ▶ Professional Neutrik True1-compatible inputs/outputs & IP65 DMX input/output sockets
- ▶ Robust, flat and compact metal housing
- ▶ Patented EZChase® DMX Delay: running lights effect without DMX control
- ▶ OLED display with touch-sensitive keys
- ▶ Calibrated LEDs
- ▶ Improved design with built-in carry grip
- ▶ Optionally available: SPIN 16 spigot, Omega bracket



FOR MORE INFORMATION AND ACCESSORIES  
PLEASE SCAN THE QR-CODES

CLPFLATPRO7G2



CLPFLATPRO12G2



CLPFLATPRO18G2



ACCESSORIES





**DROP® B1**



**DROP® B4**



**DROP® P4**

ALSO  
AVAILABLE  
AS SET

OUTDOOR STATIC LIGHTS | 

# DROP® SERIES

## BATTERY POWERED OUTDOOR UPLIGHT

### DROP® B1 / DROP® B4 CLDROPB1 / CLDROPB4

- ▶ Built-in 2.4 GHz W-DMX™ receiver
- ▶ Battery management system prevents overcharging and deep discharging
- ▶ 16-bit technology for high-resolution colours and dimming
- ▶ W-DMX and infrared control or operation via OLED display
- ▶ Diffusers for flexible beam angles
- ▶ Hemispherical diffuser makes the lamp itself a design highlight
- ▶ Also available as a set with power supply (product no. CLDROPB1SET1) or as touring set, six units in a flightcase with charging feature (product no. CLDROPB1SET2)

### DROP® P4 CLDROPP4

- ▶ 4 x 15 W RGBWAUV LEDs
- ▶ Built-in 2.4 GHz W-DMX™ receiver
- ▶ 16-bit technology for high-resolution colours and dimming
- ▶ Power supply via mains cable



FOR MORE INFORMATION AND ACCESSORIES  
PLEASE SCAN THE QR-CODES

CLDROPB1



CLDROPB4



CLDROPP4



ACCESSORIES



# INDOOR STATIC LIGHTS

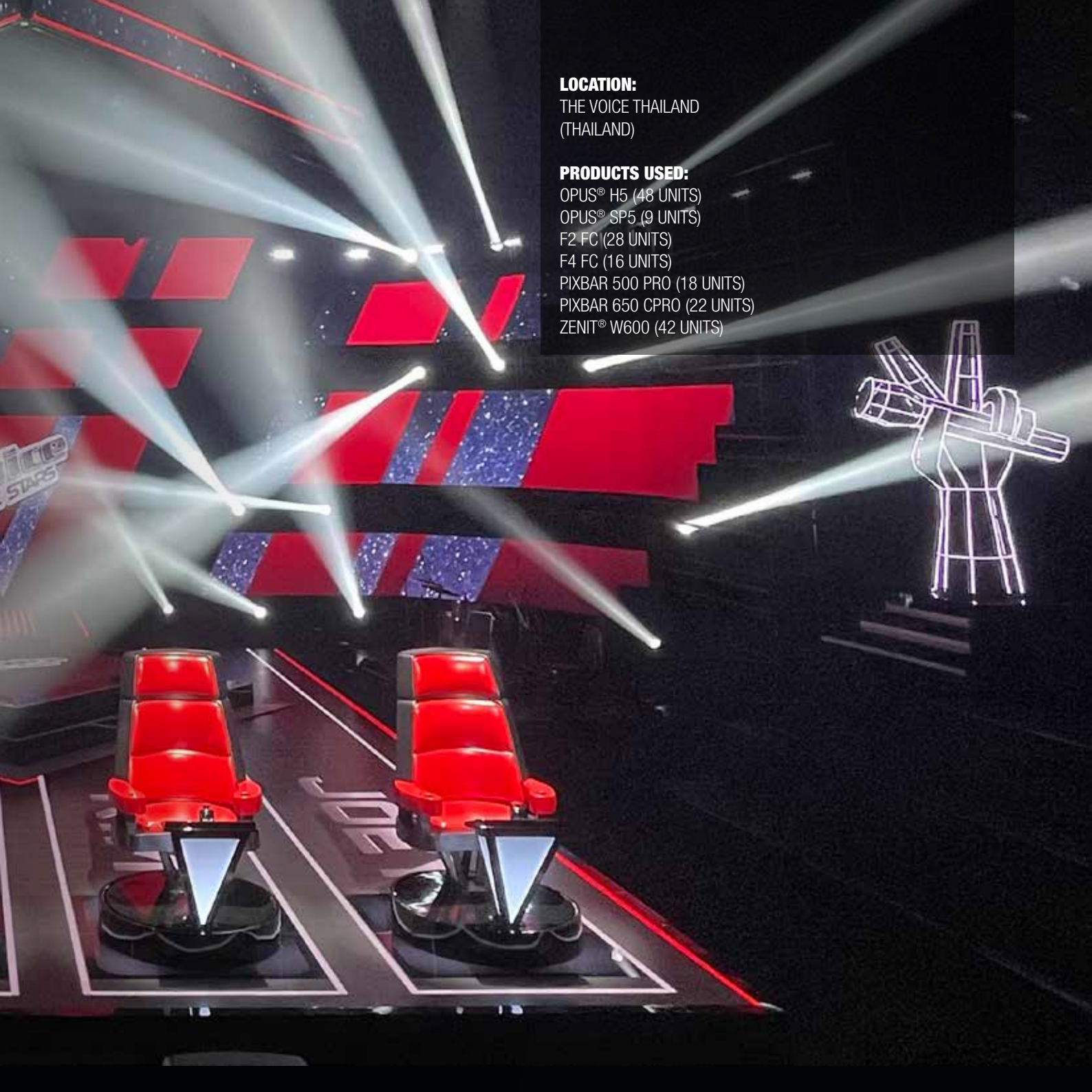


**LOCATION:**

THE VOICE THAILAND  
(THAILAND)

**PRODUCTS USED:**

OPUS® H5 (48 UNITS)  
OPUS® SP5 (9 UNITS)  
F2 FC (28 UNITS)  
F4 FC (16 UNITS)  
PIXBAR 500 PRO (18 UNITS)  
PIXBAR 650 CPRO (22 UNITS)  
ZENIT® W600 (42 UNITS)





**P2 FC**



**P2 D**



**P2 T**

**NEW**

INDOOR STATIC LIGHTS | 

# P2 SERIES

## LED PROFILE SPOTLIGHTS

- ▶ Available in Full-Colour (RGBAL), Tungsten or Daylight versions with 230 W COB LED
- ▶ High CRI (>97Ra) and TLCI (>93) for natural colour rendering
- ▶ Stepless adjustment of colour temperature 2,700 - 6,500 K
- ▶ Interchangeable fixed optics (19°, 26°, 36°, 50°) and zoom optics (15°-30°, 25°-50°)
- ▶ Control via DMX, RDM or W-DMX (via optional Cameo iDMX Stick)



FOR MORE INFORMATION AND ACCESSORIES  
PLEASE SCAN THE QR-CODES

CLP2D



CLP2FC

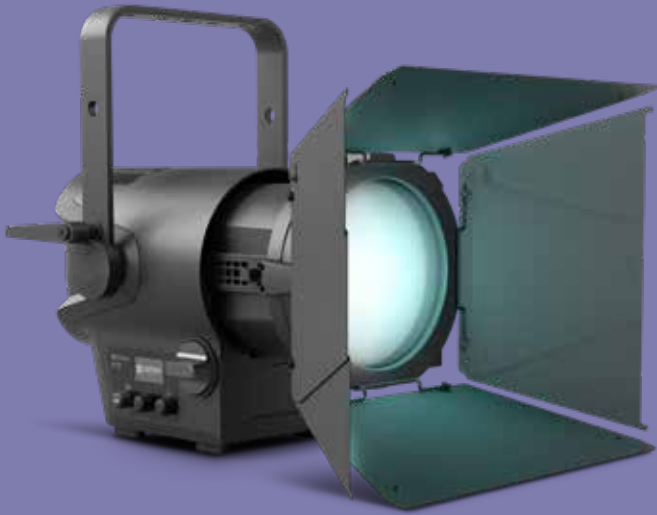


CLP2T

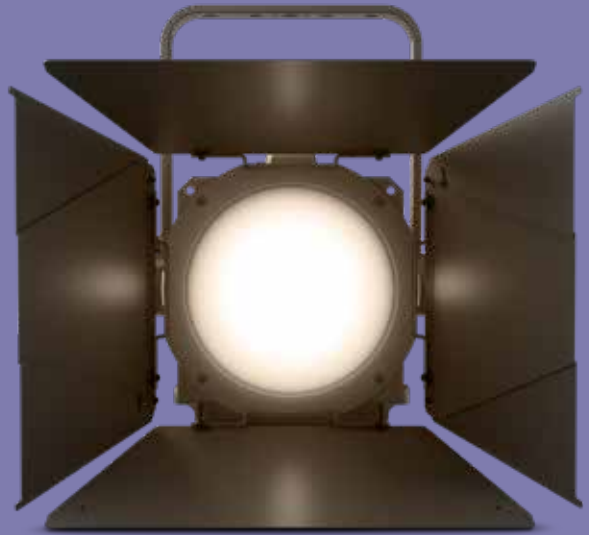


ACCESSORIES

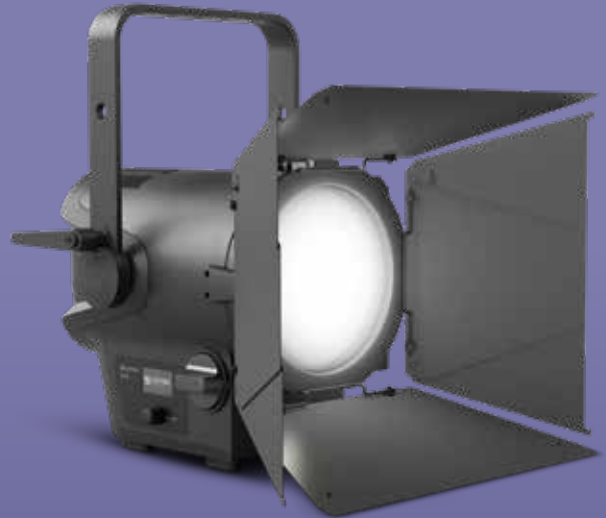




**F1 FC**



**F1 T**



**F1 D**

# F1 SERIES

## LED PROFILE SPOTLIGHTS

- ▶ Full-Colour (RGBW), Tungsten and Daylight Fresnel LED spotlights
- ▶ Replacing conventional 650W halogen Fresnel spotlights
- ▶ Powerful, vibrant color reproduction & continuous setting of the colour temperature 1600 - 6500 K, CRI > 90 (FC model)
- ▶ Continuously variable zoom range (15° to 53°)
- ▶ Flicker-free camera images thanks to selectable pulse-width modulation up to 25 kHz
- ▶ Four selectable dimmer curves with adjustable response
- ▶ Highly efficient cooling system and silent mode for noise-free operation
- ▶ 8-way barn door and gel frame included
- ▶ Compact and lightweight design for mobile applications
- ▶ Optionally expandable with the V-mount battery plate for battery operation



FOR MORE INFORMATION AND ACCESSORIES  
PLEASE SCAN THE QR-CODES

CLF1D



CLF1FC



CLF1T

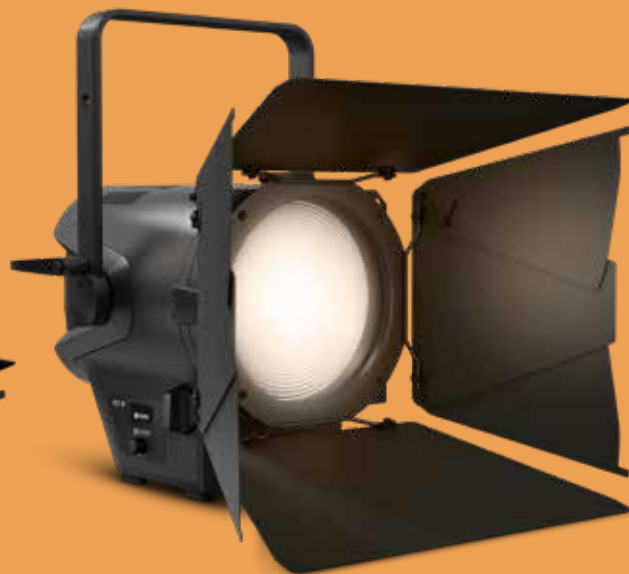


ACCESSORIES

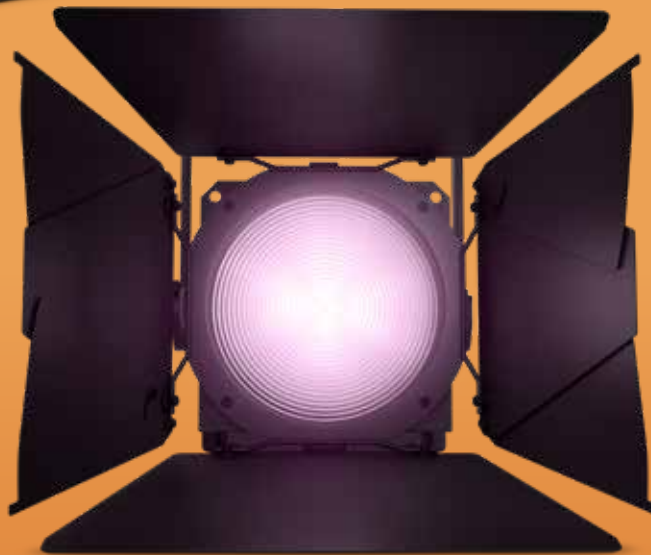




**F2 D**



**F2 T**



**F2 FC**

# F2 SERIES

## LED FRESNEL SPOTLIGHT WITH DAYLIGHT, TUNGSTEN OR RGBW LED

- ▶ Full-Colour (RGBW), Tungsten and Daylight Fresnel LED spotlights
- ▶ Seamless colour temperature adjustment from 1,600 K to 6,500 K (FC models)
- ▶ Continuous zoom for beam angles from 18° to 55°
- ▶ Four selectable 16-bit dimmer curves with adjustable response
- ▶ Highly efficient cooling thanks to a heatpipe and temperature-controlled fan
- ▶ Control via DMX and RDM
- ▶ Selectable pulse width modulation frequencies up to 25 kHz
- ▶ Flicker-free and noiseless operation, ideal for TV, film, photography studios and theatre
- ▶ Includes 8-way barn door and gel filter frames



FOR MORE INFORMATION AND ACCESSORIES  
PLEASE SCAN THE QR-CODES

CLF2D



CLF2FC



CLF2T



ACCESSORIES





**F2 FC P0**



**F2 T P0**



**F2 D P0**

# F2 PO SERIES

LED FRESNEL SPOTLIGHT WITH DAYLIGHT, TUNGSTEN OR RGBW LED

- ▶ Full-Colour (RGBW), Tungsten and Daylight Fresnel LED spotlights
- ▶ Pole-operated versions are easy to operate from the floor with a pole for pan, tilt and zoom
- ▶ Seamless colour temperature adjustment from 1,600 K to 6,500 K (FC models)
- ▶ Continuous zoom for beam angles from 18° to 55°
- ▶ Four selectable 16-bit dimmer curves with adjustable response
- ▶ Highly efficient cooling thanks to a heatpipe and temperature-controlled fan
- ▶ Control via DMX and RDM
- ▶ Selectable pulse width modulation frequencies up to 25 kHz
- ▶ Flicker-free and noiseless operation, ideal for TV, film, photography studios and theatre
- ▶ Includes 8-way barn door and gel filter frames



FOR MORE INFORMATION AND ACCESSORIES  
PLEASE SCAN THE QR-CODES

CLF2DP0



CLF2FCP0



CLF2TP0



ACCESSORIES

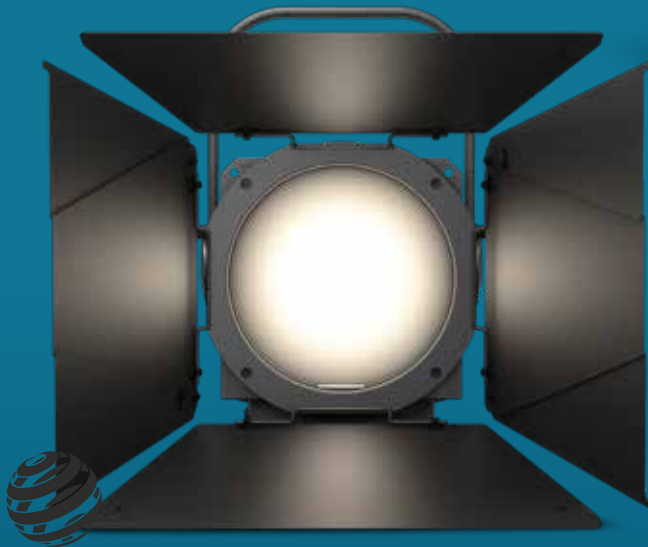




**F4 FC**



**F4 D**



reddot winner 2020 **F4 T**



# F4 SERIES

## LED PROFILE SPOTLIGHTS

- ▶ Full-Colour (RGBW), Tungsten and Daylight Fresnel LED spotlights
- ▶ Seamless colour temperature adjustment from 1,600 to 6,500 K, CRI >90 (FC model)
- ▶ Continuous zoom for beam angles from 12° to 40°
- ▶ 16-bit technology for high-resolution dimming
- ▶ Highly efficient heat pipe cooling with temperature-controlled fan
- ▶ RDM-capable with silent mode for studio use
- ▶ Four selectable dimmer curves with adjustable response
- ▶ Flicker-free and silent operation, ideal for TV, film and theatre
- ▶ Quicklight function to save time when setting lights
- ▶ 8-way barndoor and colour filter frames included



FOR MORE INFORMATION AND ACCESSORIES  
PLEASE SCAN THE QR-CODES

CLF4D



CLF4FC



CLF4T



ACCESSORIES





OPERABLE  
WITH  
**UNICON®**

INDOOR STATIC LIGHTS | 

# LUXIS® FC

## FULL COLOUR LED PAR 200 W RGBALC

- ▶ Static spotlight with RGBALC single source COB light source
- ▶ Compatible with the patented SPIN16® technology (CLZSPIN16)
- ▶ No multishadows or unsightly colour edges
- ▶ High CRI 94Ra, strong light output of over 8500lm
- ▶ CCT infinitely variable from 1900K - 8000K
- ▶ Strong primary colours and beautiful pastel shades
- ▶ Easily exchangeable front lens for beam angles between 9° and 48°
- ▶ Push encoder on the back for simple and quick operation of the most important functions such as dimmer, CCT or Green-Magenta Shift
- ▶ Very quiet fan with different fan modes for every application purpose
- ▶ Calibrated LED for cross-batch colour fidelity
- ▶ USB port for optionally available iDMX® stick



FOR MORE INFORMATION AND ACCESSORIES  
PLEASE SCAN THE QR-CODES

CLLUXISFC





**STUDIO PAR 4 G2**



**STUDIO PAR TW G2**



**STUDIO PAR 6 G2**

# STUDIO PAR SERIES

## LED PAR SPOTLIGHT

- ▶ LED PAR Spotlights offering 3 types of LEDs (RGBW, RGBWAUV, Tunable White)
- ▶ 4,700 lm luminous flux for RGBW and RGBWAUV versions
- ▶ Revised design with many workflow optimisations
- ▶ Selectable pulse width modulation (up to 25 kHz) for flicker-free operation
- ▶ Virtually silent operation in "Silent Fan Mode"
- ▶ Intuitive holding mechanism for colour filter frames
- ▶ Wireless control via W-DMX™ via optional Cameo iDMX Stick
- ▶ Simple configuration via OLED display
- ▶ PowerCON compatible power connector
- ▶ Fold-out 16 mm TV spigot (SPIN16®) can be retrofitted as an option

### CLPSTTWG2 only

- ▶ 12 x 10 W 3-in-1 Tunable White LED with 4,150 lm luminous flux
- ▶ Variable white light (2,800 - 6,800 K) + amber
- ▶ High colour fidelity: CRI>95



FOR MORE INFORMATION AND ACCESSORIES  
PLEASE SCAN THE QR-CODES

CLPST4G2



CLPST6G2



CLPSTTWG2





**ROOT PAR 4 WH**



**ROOT PAR 4**

ALSO  
AVAILABLE  
AS SET

INDOOR STATIC LIGHTS | 

# ROOT PAR 4 SERIES

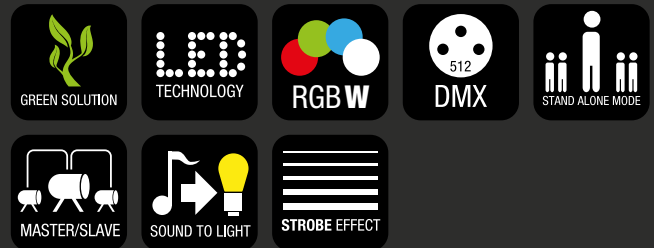
## LED PAR SPOTLIGHT

### ROOT PAR 4 CLR00TPAR4

- ▶ Powerful 7 x 4 W quad-colour LED PAR can with 1350 lm light output
- ▶ Excellent RGBW colour mixing
- ▶ Lenses optimised for even light intensity
- ▶ DMX and power input and output for daisy-chaining several devices
- ▶ Exclusive, patented EZchase® DMX delay feature for simple chase effects

### ROOT PAR 4 WH CLR00TPAR4WH

- ▶ PowerCON-compatible power connection
- ▶ Configuration via four keys and OLED display
- ▶ Built-in microphone for sound control
- ▶ USB port for iDMX® stick for wireless DMX connection via W-DMX™
- ▶ Flat, compact ABS housing with rubber feet



FOR MORE INFORMATION AND ACCESSORIES  
PLEASE SCAN THE QR-CODES

CLR00TPAR4



CLR00TPAR4WH



ACCESSORIES





**ROOT PAR 6 WH**



**ROOT PAR 6**

ALSO  
AVAILABLE  
AS SET

INDOOR STATIC LIGHTS | 

# ROOT PAR 6 SERIES

## LED PAR SPOTLIGHT

### ROOT PAR 6 CLROOTPAR6

- ▶ Powerful 6 x 12 W hex-colour LED PAR can with 1800 lm light output
- ▶ Excellent RGBAW-UV colour mixing
- ▶ High-quality, enlarged lenses for even light intensity and maximum output
- ▶ DMX and power input and output for daisy-chaining several devices
- ▶ Exclusive, patented EZchase® DMX delay feature for simple chase effects

### ROOT PAR 6 WH CLROOTPAR6WH

- ▶ PowerCON-compatible power connection
- ▶ Configuration via four keys and OLED display
- ▶ Built-in microphone for sound control
- ▶ USB port for iDMX® stick for wireless DMX connection via W-DMX™
- ▶ Flat, compact ABS housing with rubber feet



FOR MORE INFORMATION AND ACCESSORIES  
PLEASE SCAN THE QR-CODES

CLROOTPAR6



CLROOTPAR6WH



ACCESSORIES





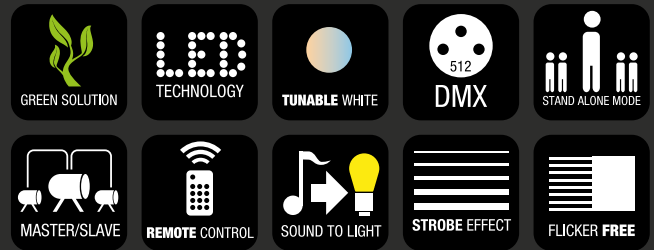
ALSO  
AVAILABLE  
AS SET

INDOOR STATIC LIGHTS | 

# ROOT® PAR TW

## 7 X 4 W TUNABLE WHITE LED PAR SPOTLIGHT

- ▶ 7 x 4-Watt white light LED with 1,380 lm
- ▶ Colour temperature continuously adjustable from 3100 K to 6500 K
- ▶ Daisy chain series connection of multiple devices via DMX and power connections
- ▶ Patented EZchase® DMX delay function for chase effects
- ▶ Four-button configuration and OLED display
- ▶ PowerCON-compatible power supply
- ▶ USB port for iDMX® stick for wireless DMX transmission via W-DMX™
- ▶ Integrated microphone for sound and music synchronisation
- ▶ Two-way mounting bracket included, tilt adjustment screw for uplighter application
- ▶ IR remote control available as an option (item no. CLPFLAT1REMOTE)



FOR MORE INFORMATION AND ACCESSORIES  
PLEASE SCAN THE QR-CODES

CLROOTPARTW



ACCESSORIES





ALSO  
AVAILABLE  
AS SET

INDOOR STATIC LIGHTS | 

# ROOT® PAR BATTERY

5 × 4 W BATTERY POWERED RGBW LED PAR SPOTLIGHT

- ▶ 5 × 4 W Quad Color RGBW LED with 1,000 lm
- ▶ Lenses optimized for even light intensity
- ▶ DMX and power input and output for daisy-chaining several devices
- ▶ Exclusive, patented EZchase® DMX delay feature for simple chase effects
- ▶ Powerful lithium-ion battery for 5+ hours of mobile operation
- ▶ USB port for iDMX® stick for wireless DMX transmission via W-DMX™
- ▶ Built-in microphone for sound control
- ▶ Flat, compact ABS housing with rubber-coated feet
- ▶ Twin mounting bracket included, tilt adjustment screw for uplighting applications
- ▶ IR remote control available as an option (item no. CLPFLAT1REMOTE)



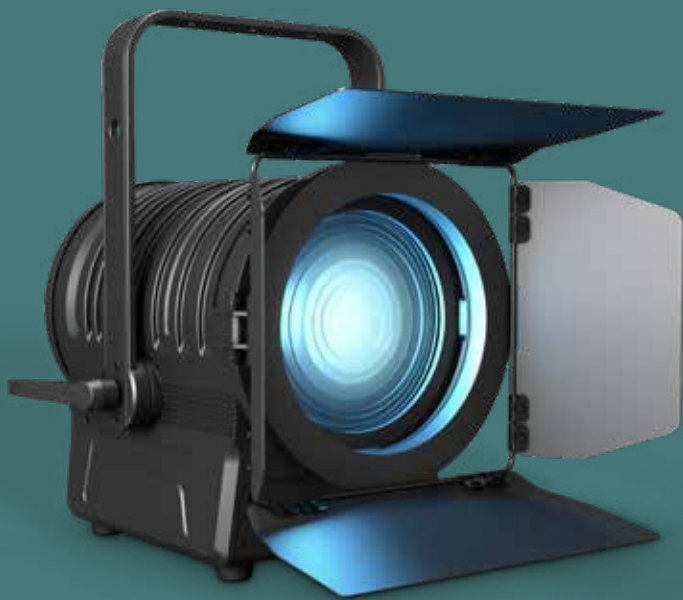
FOR MORE INFORMATION AND ACCESSORIES  
PLEASE SCAN THE QR-CODES

CLROOTPARBAT



ACCESSORIES

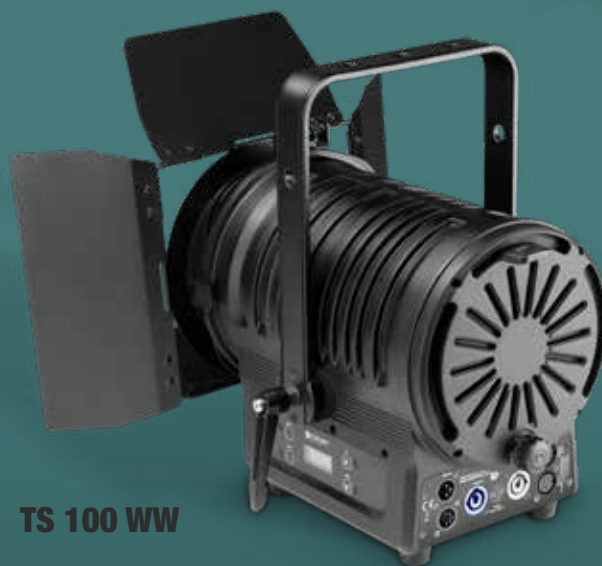




**TS 200 FC**



**TS 200 WW**



**TS 100 WW**

# TS SERIES

## THEATER SPOT WITH FRESNEL LENS

- ▶ Warm White or Full Colour (RGBALC) Fresnel LED Theater Spot
- ▶ Continuously variable manual zoom for 14° - 38° beam angle (up to 50° for FC model)
- ▶ Operation via DMX, RDM, standalone and master/slave
- ▶ CRI >96 for faithful colour reproduction / FC version CRI >90
- ▶ Flicker-free performance
- ▶ Rugged metal housing with temperature controlled fan
- ▶ Includes rotatable barn doors and colour filter frame



FOR MORE INFORMATION AND ACCESSORIES  
PLEASE SCAN THE QR-CODES

CLTS100WW



CLTS200FC



CLTS200WW



ACCESSORIES





**TS 60 W RGBW**



**TS 60 W RGBW WH**

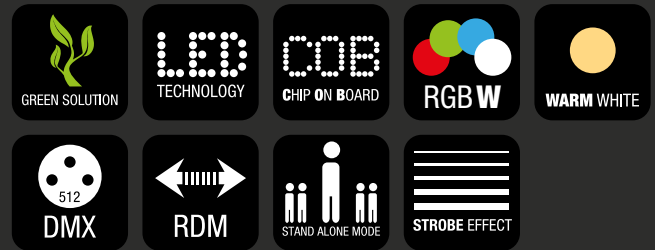


**TS 40 WW**

# TS SERIES

## THEATER SPOT WITH FRESNEL LENS

- ▶ Warm White or Full Colour (RGBW) Theater Spots with plano-convex lens
- ▶ Continuously variable manual zoom for 14° - 38° beam angle
- ▶ RDM capable
- ▶ CRI >90 (for Warm White)
- ▶ Flicker-free operation
- ▶ Rugged metal housing with convection cooling
- ▶ Includes rotatable barn doors and filter frame



FOR MORE INFORMATION AND ACCESSORIES  
PLEASE SCAN THE QR-CODES

CLTS40WW



CLTS60WRGBW



CLTS60WRGBWWH



ACCESSORIES





**X3 TW**



**X3 D**

**NEW**

INDOOR STATIC LIGHTS | 

# X SERIES

EXHIBITION LAMP WITH TUNABLE WHITE/DAYLIGHT LEDS

- ▶ 31 x 15 W Daylight or Tunable White LEDs
- ▶ High light output: 21,000 lm
- ▶ Adjustable factory temperature: 3,200 K - 6,800 K (TW version)
- ▶ Low weight: 5.5 kg
- ▶ Selectable pulse width modulation (up to 25 kHz) for flicker-free operation
- ▶ Narrow beam angle of 8° for precise illumination
- ▶ Optional filters for 20°, 50°, 80°, 10° x 60° beam angles
- ▶ Simple configuration via rotary-push encoder and OLED display
- ▶ IP protection class: IP20



FOR MORE INFORMATION AND ACCESSORIES  
PLEASE SCAN THE QR-CODES

CLX3D



CLX3TW



ACCESSORIES





**Q-SPOT® 15 W**



**Q-SPOT® 15 RGBW**



**Q-SPOT® 15 RGBW WH**

# Q-SPOT® 15 SERIES

## COMPACT SPOTLIGHTS

- ▶ Compact LED spotlights with single 15 watt quad or warm white LED
- ▶ Lenses for beam angles of 4.5°, 10° or 25° available
- ▶ RDM capable
- ▶ 16-bit technology for high definition colours and ultra smooth dimming
- ▶ Flicker free, ideal for motion picture and TV applications
- ▶ Colour temperature correction
- ▶ 4 high resolution dimming curves with adjustable response
- ▶ DMX control, sound activation plus master, slave and standalone capability
- ▶ Infrared remote control included
- ▶ 4-button OLED display for easy configuration
- ▶ Convection cooling for noise-free performance



FOR MORE INFORMATION AND ACCESSORIES  
PLEASE SCAN THE QR-CODES

CLQS15RGBW



CLQS15W



CLQS15RGBWWH





**Q-SPOT® 40 TW**



**Q-SPOT® 40 WW**



**Q-SPOT® 40 RGBW**

# Q-SPOT® 40 SERIES

## COMPACT SPOTLIGHTS

- ▶ Compact spotlights with single 40W LEDs in RGBW, Warm White and Tunable White
- ▶ Custom lens with 4.5° beam spread for uniform light intensity
- ▶ Includes 2 replacement lenses for 10° or 25° beam angles
- ▶ RDM enabled
- ▶ 16-bit technology for high definition colours and ultra smooth dimming
- ▶ Flicker free, ideal for motion picture and TV applications
- ▶ Colour temperature correction
- ▶ 4 high resolution dimming curves with adjustable response
- ▶ DMX control, sound activation plus master, slave and standalone capability
- ▶ Infrared remote control available as accessory
- ▶ 4-button OLED display for easy configuration
- ▶ Convection cooling for noiseless performance



FOR MORE INFORMATION AND ACCESSORIES  
PLEASE SCAN THE QR-CODES

CLQS40RGBW



CLQS40TW



CLQS40WW



ACCESSORIES





**THUNDER® WASH 100 RGB**



**THUNDER® WASH 100 W**

# THUNDER® 100 SERIES

3-IN-1 STROBE, BLINDER AND WASH LIGHT

- ▶ Strobe, Blinder and Wash Light all in one
- ▶ 132 RGB or White SMD LEDs
- ▶ 1 to 30 flashes/sec adjustable
- ▶ DMX, Sound- and manual control
- ▶ Master, Slave and Standalone operation
- ▶ Rugged metal housing with universal mounting bracket
- ▶ Low power consumption



FOR MORE INFORMATION AND ACCESSORIES  
PLEASE SCAN THE QR-CODES

CLTW100RGB



CLTW100W





**THUNDER® WASH 600 RGBW**



**THUNDER® WASH 600 UV**

# THUNDER<sup>®</sup> 600 SERIES

## 3-IN-1 STROBE, BLINDER AND WASH LIGHT

- ▶ Strobe, Blinder and Wash Light in a single fixture
- ▶ 648 RGB, RGBW, UV or White SMD LED 0.2 W
- ▶ Strobe adjustable from 1 to 30 flashes/sec
- ▶ DMX, sound activation and manual control
- ▶ Standalone and master/slave operation
- ▶ 4-button colour LCD for easy menu navigation and configuration
- ▶ Rugged all-metal housing with universal mounting bracket



FOR MORE INFORMATION AND ACCESSORIES  
PLEASE SCAN THE QR-CODES

CLTW600RGB



CLTW600RGBW



CLTW600W



CLTW600UV





**MATRIX PANEL 3 WW**



**MATRIX PANEL 10W RGB**

# MATRIX PANELS SERIES

5 X 5 RGB LED MATRIX PANELS WITH SINGLE PIXEL CONTROL

- ▶ 5 x 5 Matrix Panel with single pixel control
- ▶ 25 x 10 W RGB LEDs or 25 x 3 W Warm White LEDs
- ▶ DMX modes, sound activation and built-in auto run programs
- ▶ Master, slave and standalone capability
- ▶ Blinder, chase and strobe effects
- ▶ Alphabetic character and numeral mapping
- ▶ 4 selectable dimming curves
- ▶ Flicker-free operation
- ▶ Ultra flat housing with low-noise fan
- ▶ Even more impressive in multiples



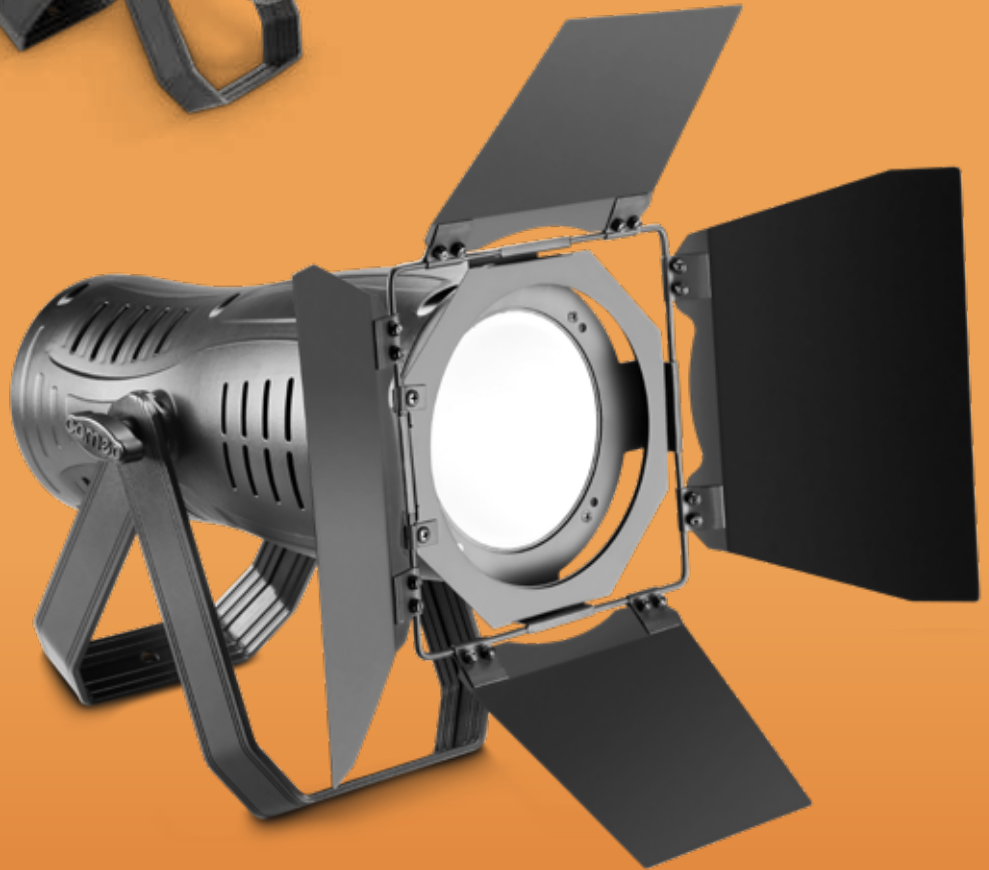
FOR MORE INFORMATION AND ACCESSORIES  
PLEASE SCAN THE QR-CODES

CLMP10WRGB



CLMP3WW





# CL 200 G2

LED SPOTLIGHT WITH WHITE 200 W COB LED AND ADJUSTABLE COLOR TEMPERATURE

- ▶ Spotlight with 200W white COB LED
- ▶ Colour temperature adjustable from 3,200 - 7,800 K
- ▶ 12,000 lm luminous flux, 32,000 lx @ 1 m
- ▶ Flicker free, ideal for motion picture and TV applications
- ▶ DMX control, master/slave and standalone capability
- ▶ 30 Hz high-speed strobe function
- ▶ 4-button LCD display for easy configuration
- ▶ Ready for daisy chaining and power linking

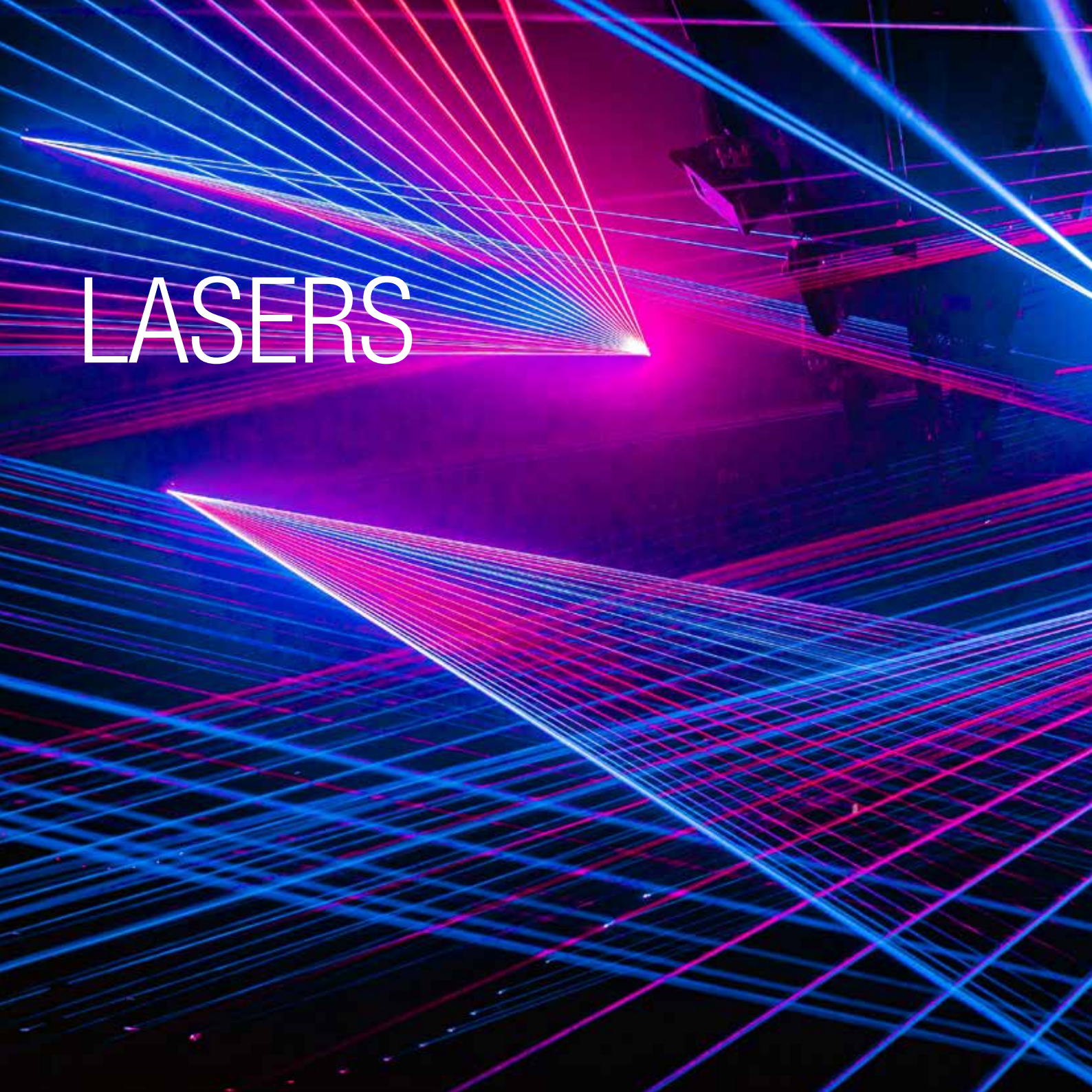


FOR MORE INFORMATION AND ACCESSORIES  
PLEASE SCAN THE QR-CODES

CLCL200G2



# LASERS





**LOCATION:**  
BOOTSHAUS  
COLONE (GERMANY)

**PRODUCTS USED:**  
D FORCE 3000 (10 UNITS)



**D FORCE 3000 RGB**

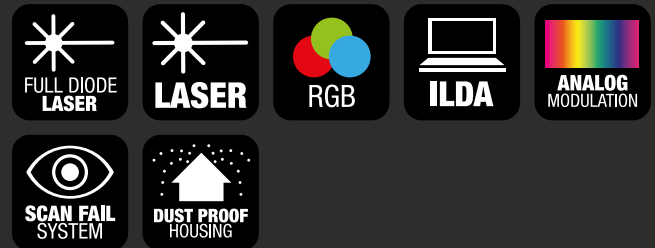


**D FORCE 5000 RGB**

# D FORCE SERIES

## PROFESSIONAL DIODE SHOW LASER

- ▶ Beam alignment without the need for servicing!
- ▶ Dust-proof aluminium casing for minimum maintenance
- ▶ 30 kpps high-speed galvo scanner @ 8° ILDA
- ▶ Analogue modulation for up to 16 million colour shades
- ▶ Precise beams with extremely low divergence for razor-sharp projections
- ▶ Interlock Out for sending the emergency switch-off signal
- ▶ Control via ILDA
- ▶ Scan Fail safety system
- ▶ Neutrik powerCON mains input and output
- ▶ Thermally activated fan for controlled operating temperature
- ▶ Compatible with Pangolin Safety diffuser and Pangolin DiscoScan V2
- ▶ 360° wide-angle diffuser with optional adapter (CLLDFORCEAPDSL or CLLDFORCEAPSSL)



FOR MORE INFORMATION AND ACCESSORIES  
PLEASE SCAN THE QR-CODES

CLLDFORCE3000RGB



CLLDFORCE5000RGB



ACCESSORIES

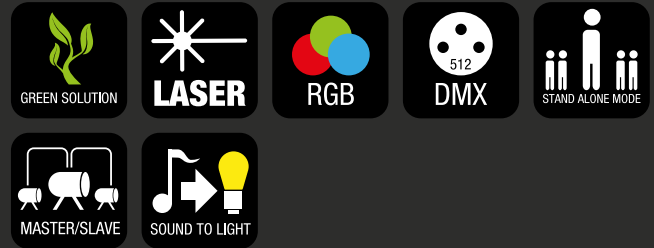




# IODA 1000 RGB

## PROFESSIONAL 1000 MW RGB SHOW LASER

- ▶ Professional laser show light
- ▶ Dust proof aluminium enclosure for minimum maintenance
- ▶ High speed high performance 30 Kpps galvo scanners @ 8° ILDA
- ▶ 128 pattern presets
- ▶ Analog modulation for up to 16 million color hues
- ▶ Precision beams with minimum divergence for razor-sharp projections
- ▶ ILDA, DMX and sound control plus auto function
- ▶ Master, slave and standalone modes
- ▶ Display with 4 function keys for easy manual operation
- ▶ Scan Fail Safety system
- ▶ Neutrik powerCON mains inputs and outputs
- ▶ Low noise fan for quiet and cool operation



FOR MORE INFORMATION AND ACCESSORIES  
PLEASE SCAN THE QR-CODES

CLLIODA1000RGB



ACCESSORIES





**LUKE 700 RGB**

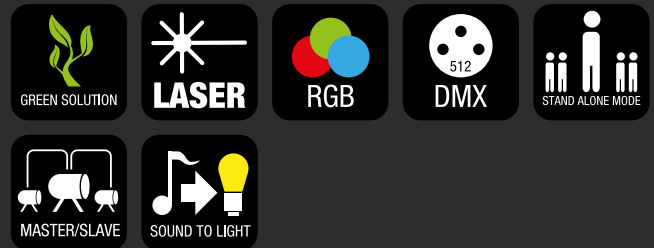


**LUKE 1000 RGB**

# LUKE SERIES

## PROFESSIONAL RGB SHOW LASER

- ▶ Professional laser show light
- ▶ Dual layer construction for maximum optical performance
- ▶ High speed 30 Kpps galvo scanners @ 8° ILDA
- ▶ 128 pattern presets
- ▶ Precision beams with minimum divergence for razor-sharp projections
- ▶ ILDA, DMX and sound control plus auto function
- ▶ Master, slave and standalone modes
- ▶ Display with 4 function keys for easy manual operation
- ▶ Scan Fail Safety system
- ▶ Neutrik powerCON mains inputs and outputs
- ▶ Rugged aluminium enclosure with low noise fan and key switch



FOR MORE INFORMATION AND ACCESSORIES  
PLEASE SCAN THE QR-CODES

CLLLUKE700RGB



CLLLUKE1000RGB



ACCESSORIES



**WOOKIE 200 RGY**

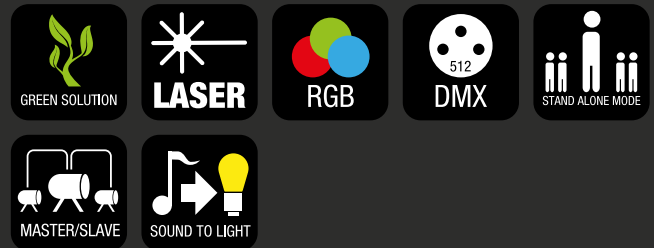


**WOOKIE 400 RGB**

# WOOKIE SERIES

## PROFESSIONAL RGB SHOW LASER

- ▶ Animation laser with high speed 5 Kpps stepper motor
- ▶ 60° scan angle
- ▶ Precision beams with minimum divergence
- ▶ 32 pattern presets
- ▶ DMX, sound and infrared control plus auto function
- ▶ Master, slave and standalone modes
- ▶ Display with 4 function keys for easy manual operation
- ▶ Rugged aluminium enclosure with key switch
- ▶ Includes handheld infrared remote



FOR MORE INFORMATION AND ACCESSORIES  
PLEASE SCAN THE QR-CODES

CLLWOOKIE200RGY



CLLWOOKIE400RGB




ACCESSORIES



# EFFECTS





**LOCATION:**  
THE CONTACT  
KAUNAS (LITHUANIA)

**PRODUCTS USED:**  
ZENIT® W600 (108 UNITS)  
ZENIT® W600 SMD (32 UNITS)  
ZENIT® P130 LSD (120 UNITS)  
OPUS® X PROFILE (35 UNITS)  
OPUS® H5 (7 UNITS)



**INSTANT HAZER 1400 PRO**



**INSTANT HAZER 1500 T PRO**

# INSTANT HAZE SERIES

## TOURING HAZER WITH MICROPROCESSOR CONTROL

- ▶ Powerful 1,500 watt microprocessor-controlled touring haze machine
- ▶ Rugged road case
- ▶ 1020 m<sup>3</sup> output capacity per minute
- ▶ Extended-life stainless steel vapor tube
- ▶ Automatic self-cleaning mechanism
- ▶ Haze emission and fan speed individually adjustable in 100 increments
- ▶ 2-channel DMX control and standalone functionality
- ▶ Integrated fluid canister drawer
- ▶ Whisper-quiet operation
- ▶ Ideal for TV, motion pictures, theaters, discotheques and live events
- ▶ Enhances any light show



FOR MORE INFORMATION AND ACCESSORIES  
PLEASE SCAN THE QR-CODES

CLIH1400PRO



CLIH1500TPRO



ACCESSORIES





**INSTANT FOG 1700 PRO**



**INSTANT FOG 1700 T PRO**

# INSTANT FOG SERIES

## HIGH OUTPUT TOURING FOG MACHINE

- ▶ 1700 watt high output touring fogger
- ▶ Built into a rugged road case
- ▶ DMX control plus standalone operation
- ▶ High-contrast LC display
- ▶ Master/Slave Mode
- ▶ Integrated fluid canister drawer
- ▶ Integrated 100 mm hose adapter
- ▶ Automatic shutdown prevents pump damage when fluid tank is empty
- ▶ Ideal for live events, discotheques, theatres, TV and film productions



FOR MORE INFORMATION AND ACCESSORIES  
PLEASE SCAN THE QR-CODES

CLIF1700PRO



CLIF1700TPRO



ACCESSORIES





# INSTANT AIR 2000 PRO

WIND MACHINE WITH ADJUSTABLE FAN SPEED AND AIR FLOW DIRECTION

- ▶ Professional high velocity wind machine
- ▶ Max. air flow 56 m<sup>3</sup> per minute
- ▶ Whisper-quiet 31 cm fan
- ▶ Fan speed adjustable from 1 - 100 in 1% increments
- ▶ Continuously adjustable air flow direction
- ▶ DMX control or standalone operation
- ▶ RF remote control included
- ▶ Floor standing or hanging applications



FOR MORE INFORMATION AND ACCESSORIES  
PLEASE SCAN THE QR-CODES

CLIA2000PRO





**PHANTOM F5**



**PHANTOM F3**



**PHANTOM H2**

# PHANTOM SERIES

## FOG MACHINES WITH TANK ILLUMINATION

- ▶ Highly efficient heating element with up to 1,500 W heat output
- ▶ Short warm-up time (about 4 minutes)
- ▶ Output of up to 509 m<sup>3</sup>/min
- ▶ Two-colour tank illumination with 1.8 l capacity and level indicator
- ▶ Compatible with standard water-based fog fluid (e.g. Cameo DJ Fluid)
- ▶ Removable tank for simple filling
- ▶ DMX control and stand-alone operation
- ▶ Optimal coordination of the pump and heating, for uniform fog at any density
- ▶ Mounting bracket and multi-function remote control included
- ▶ LED display for simple configuration



FOR MORE INFORMATION AND ACCESSORIES  
PLEASE SCAN THE QR-CODES

CLPHANTOMF3



CLPHANTOMF5



CLPHANTOMH2



ACCESSORIES





# STEAM WIZARD 2000

FOG MACHINE WITH RGBA LEDS FOR COLOURED FOG EFFECTS

- ▶ 1,200 W heating element and high-performance pump for powerful blasts of fog
- ▶ 12 x 10W RGBA 4-in-1 LEDs for uniform fog illumination
- ▶ Vertical or horizontal mounting
- ▶ Top or bottom fluid tank placement options
- ▶ Bottom tank placement enables easy overhead installation for downward jets
- ▶ Automatic shutdown prevents pump damage when fluid tank is empty
- ▶ LED indicators for fluid tank and operating status
- ▶ 4-channel DMX control
- ▶ Includes handheld remote with illuminated buttons and controls for Continuous, Timer, Manual, Fog Output, LED Brightness and Colour plus 10m cable



FOR MORE INFORMATION AND ACCESSORIES  
PLEASE SCAN THE QR-CODES

CLSW2000



ACCESSORIES





# CHAPTER TWO

# **ARCHITECTURAL**

# **LIGHTS**

## **CHAPTER ONE** ENTERTAINMENT LIGHTS

OUTDOOR MOVING HEADS	6
INDOOR MOVING HEADS	14
OUTDOOR STATIC LIGHTS	42
INDOOR STATIC LIGHTS	70
LASERS	112
EFFECTS	122

## **CHAPTER TWO** ARCHITECTURAL LIGHTS

OUTDOOR LIGHTS	136
INDOOR LIGHTS	144

## **CHAPTER THREE** TOOLS

LIGHTING TOOLS	152
----------------	-----

ICON LEGEND / REGISTER	166
------------------------	-----

# OUTDOOR LIGHTS





**LOCATION:**

HOTEL NORRE VOSBORG  
VEMB (DENMARK)

**PRODUCTS USED:**

ZENIT® W600I (16 UNITS)  
ZENIT® W300I (80 UNITS)  
ZENIT® B200 (4 UNITS)



**ZENIT® W300i**



**ZENIT® W600i**

# ZENIT® W600i / W300i

## OUTDOOR LED WASH LIGHTS FOR FIXED INSTALLATION

WIRELESS SOLUTION  
MADE IN SWEDEN



- ▶ 40 x 15 W RGBW LEDs with 21,000 lm luminous flux for intensive homogeneous color mixing (W600i)
- ▶ 21 x 15 W RGBW LEDs with 11,000 lm luminous flux for intense, uniform mixing of colours (W300i)
- ▶ Configuration only possible via RDM or with the ZENIT® REMOTE DISPLAY CONTROLLER (CLZIXDISP) - available separately
- ▶ IP67 classification for continuous use outdoors
- ▶ Black C5-M certified coating
- ▶ Various symmetric and asymmetric filter frames available as accessories
- ▶ High-resolution color mixing and dimming using 16-bit technology
- ▶ Control via DMX, RDM (via DMX) and automated programs
- ▶ Temperature-controlled fans for reliable, low-noise operation



FOR MORE INFORMATION AND ACCESSORIES  
PLEASE SCAN THE QR-CODES

CLZW300I



CLZW600I



ACCESSORIES



**DURA® SPOT 100**



**DURA® SPOT 400**



**DURA® SPOT 200**



**DURA® SPOT 60**



**NEW**

OUTDOOR LIGHTS | 

# DURA<sup>®</sup> SPOT SERIES

## IP67 INSTALL SPOT WITH RGBW LED

- ▶ Efficient 20 W RGBW LED
- ▶ IP67 and IK08 classification for permanent outdoor use
- ▶ 4 sizes to fit any application
- ▶ 6° beam angle
- ▶ Various filters for different beam angles available as accessories
- ▶ Filters can be applied without breaking IP Seal
- ▶ Anti glare shield included for less light spill
- ▶ Calibrated LEDs for excellent colour consistency
- ▶ Control via DMX, RDM or external control remote (UNICON)
- ▶ Minimum LED lifetime: 50,000 hours (to >70% luminous output)

FOR MORE INFORMATION AND ACCESSORIES  
PLEASE SCAN THE QR-CODES

CLDS60



CLDS100



CLDS200



CLDS400





**Q-SPOT 40I W**



**Q-SPOT 40I**

# Q-SPOT® SERIES

## COMPACT OUTDOOR SPOTLIGHTS

- ▶ Compact LED outdoor spotlight with single 40W RGBA LED
- ▶ IP65 rated for permanent outdoor installation
- ▶ Custom lens with 4.5° beam spread for uniform light intensity
- ▶ RDM enabled
- ▶ 360° rotatable anti-glare shield
- ▶ 16-bit technology for high definition colours and ultra smooth dimming
- ▶ 4 high resolution dimming curves with adjustable response
- ▶ 4 modes of DMX control plus master, slave and standalone capability
- ▶ OLED display with 4 touch buttons for easy configuration
- ▶ Convection cooling for noiseless performance
- ▶ Includes ground spike and 2 replacement lenses for 10° or 25° beam angles, Power & DMX IN cables and endcaps for Power & DMX I/O
- ▶ IR remote control optionally available (item no. CLQSREMOTE2)
- ▶ Available in black or white housing



FOR MORE INFORMATION AND ACCESSORIES  
PLEASE SCAN THE QR-CODES

CLQS40IB



CLQS40IW



ACCESSORIES





# INDOOR LIGHTS



**LOCATION:**

ZOOM CLUB

FRANKFURT/MAIN (GERMANY)

**PRODUCTS USED:**

ZENIT® W300, AZOR® B1

MOVO BEAM Z 100, PIXBAR 600 PRO

H1 FC



H1 FC WH



H2 T



# H SERIES

## DMX-CONTROLLABLE HOUSE LIGHTS - BLACK / WHITE HOUSING

### H1

- ▶ 80 W & 120 W LED House lights in Daylight, Full Colour (RGBAL) and Tungsten versions
- ▶ Housing colours available in black & white to each version
- ▶ Adjustable beam angle from 20° to 65° via exchangeable lenses
- ▶ Completely silent operation thanks to convection cooling without fans

### H2

- ▶ 180 W LED House lights in Daylight, Full Colour (RGBAL) and Tungsten versions
- ▶ Housing colours available in black & white to each version
- ▶ Adjustable beam angle from 21° to 64° / 20° to 60° via exchangeable lenses depending on version
- ▶ Controllable via DMX, W-DMX™, RDM and optional UNICON® remote control



FOR MORE INFORMATION AND ACCESSORIES  
PLEASE SCAN THE QR-CODES

H SERIES



ACCESSORIES





**G4 FC WH**



**G4 T**

# G SERIES

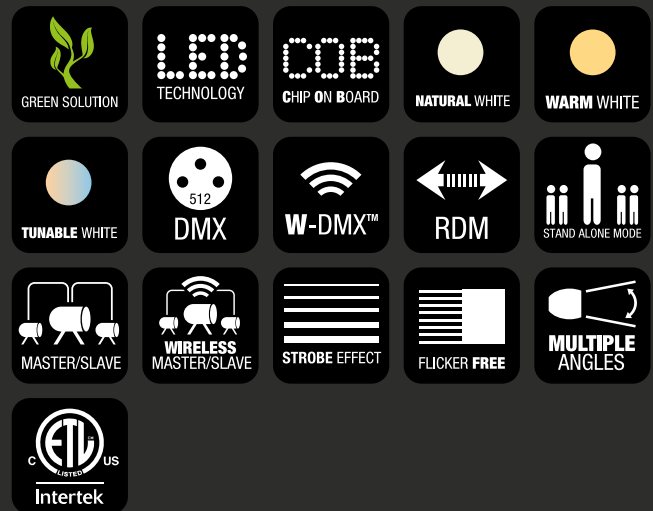
## DMX-CONTROLLABLE HOUSE LIGHTS - BLACK / WHITE HOUSING

### G4 N & G4T

- ▶ Tracklights with 25 W Neutral or Tungsten COB LED
- ▶ Colour temperature: 4,000 K (neutral white) / 3,000 K (warm white)
- ▶ High CRI (>97Ra) for natural white light reproduction
- ▶ Use on commercially available busbar systems
- ▶ Applications: Museum, retail, gastronomy and many more.
- ▶ Passive cooling for almost silent operation

### G4 FC & G4 TW

- ▶ Tracklights with 40 W RGBL or Tunable White COB LED
- ▶ Colour temperature: 2,700 K - 6,500 K (FC version)
- ▶ Use on commercially available busbar systems
- ▶ Applications: Museum, retail, gastronomy and many more.
- ▶ Beam angle flexibly adjustable via magnetic filters
- ▶ Consistent and accurate color temperatures thanks to factory calibrated LED (FC version)
- ▶ Optional magnetic filters (CTO, CTB, Honeycomb)



FOR MORE INFORMATION AND ACCESSORIES  
PLEASE SCAN THE QR-CODES

G SERIES



ACCESSORIES





# CHAPTER THREE

## TOOLS

### **CHAPTER ONE** ENTERTAINMENT LIGHTS

OUTDOOR MOVING HEADS	6
INDOOR MOVING HEADS	14
OUTDOOR STATIC LIGHTS	42
INDOOR STATIC LIGHTS	70
LASERS	112
EFFECTS	122

### **CHAPTER TWO** ARCHITECTURAL LIGHTS

OUTDOOR LIGHTS	136
INDOOR LIGHTS	144

### **CHAPTER THREE** TOOLS

LIGHTING TOOLS	152
----------------	-----

ICON LEGEND / REGISTER	166
------------------------	-----

# LIGHTING TOOLS



36  
PREMIOS  
GOYA  
VALENCIA



**LOCATION:**

36. GOYA AWARD  
BARCELONA (SPAIN)

**PRODUCTS USED:**

OPUS® X PROFILE (24 UNITS)  
OPUS® X WASH (24 UNITS)  
OPUS® H5 (48 UNITS)  
OPUS® X PROFILE (24 UNITS)  
EVOS® W7 (16 UNITS)  
OPUS® X HIGH CRI GOBO FILTER (24 UNITS)



# CONTROL PADS

IN-WALL MULTI-ZONE DMX CONTROLLER - STICK EDITION - BLACK / WHITE HOUSING

---

- ▶ Wall-mount multi-zone lighting controller, networkable
- ▶ 1,024 DMX channels, 500 scenes, 10 zones
- ▶ Tempered glass front panel
- ▶ Scroll wheel and quick access dimmer, scene, RGB colour and speed buttons
- ▶ Full-colour display for easy setup
- ▶ Ethernet and USB connectivity
- ▶ MicroSD memory
- ▶ Power supply via Ethernet or optional power adapter (item no. CLCPACDCSE)
- ▶ ESA Mac and Windows software
- ▶ iOS and Android remote control apps

---

FOR MORE INFORMATION AND ACCESSORIES  
PLEASE SCAN THE QR-CODES

CLCPSEB



CLCPSEW





**SB8.3**



**SB 6 DUAL**



**XNODE 4**



**SB 6 T RDM**



**XNODE 8**

# XNODE, SB 6D / 6 T RDM / 8.3

## 4- & 8-PORT DMX ETHERNET NODES

- ▶ Converts Art-Net and sACN to DMX for up to 4 or 8 independent universes
- ▶ Supports Art-Net 1 through 4 (DMX and RDM)
- ▶ sACN release and draft version
- ▶ 4 or 8 individually optically isolated DMX ports, each configurable as input or output
- ▶ Graphic display and encoder for easy configuration and precise display of status information
- ▶ Shortcut key for each DMX output port for direct configuration of Art-Net or sACN universe
- ▶ Web interface for status display, settings, and firmware updates
- ▶ Neutrik powerCON input and output
- ▶ Type of construction: half 19" housing (rack mount kit included)
- ▶ Power cord is NOT included in the delivery

FOR MORE INFORMATION AND ACCESSORIES  
PLEASE SCAN THE QR-CODES

CLXNODE4



CLXNODE8



CLSB6D



CLSB6TRDM



CLSB83





COMBO

100%  
COMBO UNICORN  
Back Enter  
Touch screen  
COMBO is a brand of the Adam Hall Group.  
www.adamhall.com

COMBO

100%  
COMBO UNICORN  
Back Enter  
Touch screen  
COMBO is a brand of the Adam Hall Group.  
www.adamhall.com

# UNICON®

## REMOTE CONTROL FOR INSTALLATION LIGHTING

---

- ▶ Unit controller for configuration and control of DMX fixtures
- ▶ Bright 2.8" touch display and encoder wheel for intuitive menu navigation
- ▶ Transmits and Receives DMX/RDM signals in a DMX universe - 512 channels
- ▶ 5-pin DMX, RJ45 and USB-C connector
- ▶ Integrated Li-Ion battery, 6,500 mAh
- ▶ MicroSD card slot for saving and transferring scenes
- ▶ Reads sensor data from compatible fixtures
- ▶ Acts as firmware updater for compatible devices
- ▶ Eyelet for carrying strap or carabiner

---

FOR MORE INFORMATION AND ACCESSORIES  
PLEASE SCAN THE QR-CODES

CLIREMOTE





**DVC CUE**



**DVC PRO**



**DVC**

# DVC SERIES

## DMX INTERFACES

### **DVC / DVC PRO** CLDVC / CLDVCPRO

- ▶ 512-/1024-Channel USB to DMX Interface and Control Software Package
- ▶ USB interface with 512 or 1024 DMX channels in live mode
- ▶ Integrated flash memory for 256 DMX channels in stand-alone mode (extendable to up to 1024 channels)
- ▶ User-friendly, intuitive Cameo DMX software “by Daslight” for Windows and Mac OS X available to download free
- ▶ Internet connection required for hardware registration and software activation
- ▶ Standalone mode upgradable to 512 DMX channels
- ▶ Over 15,000 device libraries and a built-in ScanLibrary editor for creating and editing your own device profiles
- ▶ Powerful XEEL engine for hundreds of impressive pixel and video effects and movements for moving heads and scanners

- ▶ Touchscreen control plus remote control of essential features via iOS and Android smartphones and tablets or MIDI controller
- ▶ Audio analyser and MIDI clock for synchronising lightshow and music speed
- ▶ Real-time programming and 3D visualisation of lightshow
- ▶ Compatible with Light Raider app on Android devices via USB (free 30-day trial version available for download)

### **DVC CUE** CLDVCCUE

- ▶ 1024 DMX channels in live mode, 512 DMX channels in stand-alone mode
- ▶ Expandable from 2 to 4 DMX512 universes (2048 DMX channels)
- ▶ Intuitive backlit keyboard with 10 buttons for direct access
- ▶ 99 scenes across 5 zones and calendar triggering (only possible with optional ESAPro 2 software)
- ▶ USB and Ethernet for programming/control
- ▶ User-friendly, intuitive Cameo DMX software “by Daslight” for Windows and Mac OS X as a free download
- ▶ Smart Upgrade Technology (SUT)

FOR MORE INFORMATION AND ACCESSORIES  
PLEASE SCAN THE QR-CODES

CLDVC



CLDVCPRO



CLDVCCUE



**W-DMX T2**



**iDMX STICK**



**iDMX CORE**

# W DMX/iDMX

## DMX CONVERTER/CONTORLER

### iDMX CORE CLDMXCORE

- ▶ Battery-powered WiFi to W-DMX™ converter
- ▶ Allows wireless lighting control via the Cameo iDMX® Controller App
- ▶ Receives WiFi signals from all iOS and Android devices
- ▶ 2.4 GHz W-DMX™ transmitter with an operating range of up to 300 m
- ▶ Can be used purely as a W-DMX™ transmitter via the DMX input
- ▶ Allows control of conventional DMX devices using the iDMX® Controller App via the DMX output
- ▶ Long-life LG Chem lithium-ion battery for reliable operation
- ▶ Battery management system prevents overcharging and deep discharging
- ▶ Includes power adapter charger, bag and DMX cable

### iDMX STICK CLIDMXSTICK

- ▶ Operating range up to 300 m
- ▶ W-DMX chip by Wireless Solution
- ▶ 2.4 GHz receiving frequency
- ▶ USB-A connector

### W-DMX T2 CLWDMXT2

- ▶ Transmitter & Receiver modes with 512 DMX channels
- ▶ Up to 700 m / 2,200 ft
- ▶ License-free 2.4 GHz radio band
- ▶ RDM enabled
- ▶ Configuration via Bluetooth
- ▶ Adaptive Frequency Hopping (AFHSS)
- ▶ Data-Safe error correction
- ▶ Backward compatible with G3, G4, G4S and G5 series
- ▶ Optional CRMX and CRMA compatibility (request to sales@adamhall.com)
- ▶ A power cable is NOT included in the package and must be ordered additionally

FOR MORE INFORMATION AND ACCESSORIES  
PLEASE SCAN THE QR-CODES

CLWDMXT2



CLIDMXCORE



CLIDMXSTICK





**LOCATION:**

JASON DERRULO CONCERT  
AALBORG (DENMARK)

**PRODUCTS USED:**

ZENIT® W600 SMD (16 UNITS)





### **TRI-COLOR RGB LEDs**

Also called 3-in-1, RGB LEDs have red, green and blue emitters to produce the RGB additive Color Spectrum and white.



### **LED TECHNOLOGY**

LEDs are extremely advantageous for the use in lighting systems: they are bright, emit very little heat, have a very long lifetime and low energy consumption. Also, LED fixtures often weigh less than conventional fixtures.



### **ECO-FRIENDLY**

With highly efficient energy use, a very long LED lifetime and low heat emission, this fixture is environmentally friendly.



### **DMX512**

Created in 1986, DMX512 is a communications standard for lighting equipment. up to 32 DMX fixtures can be daisy-chained and controlled by a dedicated source, e.g. a lighting console. In a DMX512 daisy chain “network”, the controller is called “master” while the daisy-chained fixtures are the “slaves.”



### **“MASTER” AND “SLAVE”**

Simply put, this fixture is able to control or be controlled by other fixtures. In “master” mode and first in a chain, the fixture acts as a controller for fixtures (“slaves”) that are connected to its output. In “slave” mode, the input of the fixture is connected to the output of a lighting console or “master.” Fixtures that are daisy-chained to a slave’s output also act as slaves.



### **WIRELESS MASTER/SLAVE**

Simply put, this fixture is able to control or be controlled by other fixtures. In “master” mode and first in a chain, the fixture acts as a controller for fixtures (“slaves”) that are connected to its output. In “slave” mode, the input of the fixture is connected to the output of a lighting console or “master.” Fixtures that are daisy-chained to a slave’s output also act as slaves.



### **SOUND CONTROL**

In “sound to light” mode, the fixture is controlled by a built-in microphone capturing sounds to activate color changes, e.g. the beat of the music.



### **STANDALONE MODE**

In “standalone” mode, this fixture uses built-in programmes to control its functions. There is no need for a lighting console or “master” controller.



### STROBE LIGHTING

Strobe lights emit a large number of periodic flashes per second seemingly freezing the movement of objects thus creating the illusion of slow motion.



### QUAD COLOR RGBA/RGBW LEDs

Also called 4-in-1, quad color LEDs add amber to the RGB spectrum for increased saturation, or white for improved contrast and definition.



### RGB ADDITIVE COLOR SYSTEM

Additive color mixes use varying amounts of red, green and blue to produce other colors and white. The RGB system is used in television, computer monitors and digital cameras to name a few.



### RGB ADDITIVE COLOR SYSTEM PLUS WHITE LEDs

Adding white LEDs to the RGB system produces more contrast and definition and enhances the RGB generated white and pastel colors.



### RGBWA

RGB additive color system plus white and amber LEDs.



### COB LED TECHNOLOGY

The “chip-on-board” multi-LED array is a recent technology that produces a high-density large-area light source with high brightness and uniform diffusion for a rich wash of colors.



### INGRESS PROTECTION RATING OF 65

The IP code rates the degree of protection against the intrusion of solid objects, water and access to hazardous parts. This fixture is completely protected against hazardous contact, water jets and ingress of dust.



### UV

UV or black lights are employed for decorative and artistic lighting effects.



### ILDA

This laser fixture can be controlled with any ILDA-compatible controller.



### SINGLE PIXEL CONTROL

This device features Single pixel control. With individual LED pixel on/off status and color control this fixture is capable of creating animated patterns and video panel style pixel-mapping effects.



### 5-IN-1 LED

These fixtures add amber and white to the RGB spectrum for increased saturation, and white for improved contrast and definition.



### 6-IN-1 LED

These fixtures add amber, white and UV to the RGB spectrum for increased saturation, and white for improved contrast and definition. UV or black lights are employed for decorative and artistic lighting effects.



### INFRARED REMOTE CONTROL

Featuring an IR sensor, this fixture allows control with a handheld IR remote.



### WIFI

This device is compatible with all WiFi standards.



### W-DMX™

This fixture features W-DMX™ technology for wireless DMX control.



### COLD WHITE

“Cold white” is a clean, very bright light in the 5,000 - 10,000 K range with a somewhat artificial touch that goes well with deeply saturated primary colors. Measured in degrees of Kelvin (K), color temperature indicates the properties of light sources.



### WARM WHITE

“Warm white” is in the 2,000 - 4,000 K range providing a soft light with a slight touch of yellow that is natural and pleasing to the eye. Measured in degrees of Kelvin (K), color temperature indicates the properties of light sources.



### RDM-ENABLED

This fixture is RDM-enabled. The Remote Device Management protocol extension to DMX allows bi-directional communication over a standard DMX network for the convenient configuration, management and monitoring of RDM devices connected to a dedicated RDM controller.



### UNLIMITED ROTATION

This moving head fixture features two high-speed high-torque motors for infinite horizontal and vertical rotation (pan and tilt).



### PAN & TILT

This moving head fixture features two high-speed high-torque motors for horizontal and vertical rotation (pan and tilt) which are controllable independently.



### ART-NET

This fixture is Art-Net compatible.



### ZOOM FUNCTION

This fixture features a motorized or manual zoom to vary its beam angle.



### BATTERY POWERED

This fixture is powered by rechargeable high-capacity batteries.



### MULTIPLE ANGLES

This fixture provides multiple beam angles and shapes using the included or optional light shaping diffusers.



### SNAPMAG® TECHNOLOGY

This fixture features SnapMag® technology that enables mounting SnapMag® filter frames in an instant without the need for tools.



#### ANDROID COMPATIBLE

This fixture is delivered with a software allowing control via Android devices.



#### MAC OS AND IOS COMPATIBLE

This fixture is delivered with a software allowing control via Mac OS X and iOS.



#### WINDOWS COMPATIBLE

This fixture is delivered with a software allowing control via computers running on Windows.



#### FULL DIODE LASER

The pure diode design provides an increased life span and much higher efficiency compared to temperature-dependent DPSS laser sources.



#### DISCHARGE LAMP

Discharge lamps are highly efficient and exceptionally bright providing stable light output, good color rendering and long lifetime.



#### FOCUS

The focus adjusts the beam edge from hard to soft and gobo projection to any distance.



#### CIRCULAR PRISM

A circular prism multiplies the beam or gobo projection by the number of facets and arranges the result in a circle.



#### LINEAR PRISM

A linear prism multiplies the beam or gobo projection by the number of facets and arranges the result in a line.



#### GOBO WHEEL

Gobo wheels hold a selection of fixed or rotating gobos made of metal or glass. Basically, gobos are stencils that allow you to project patterns, shapes and images.



#### COLOR WHEEL

Equipped with multiple color filters, rotating the color wheel enables virtually instant color changes.



#### 4-SHUTTER FRAMING BLADES

Similar in effect to barn doors but much more flexible, the 4-blade framing shutter system is designed to shape the beam edge. Each blade can be moved and angled independently to full blackout. The entire system can be rotated by 45 degrees in both directions enabling exact positioning.



### CMY

This luminaire uses a white light source and subtractive CMY (cyan, magenta, yellow) color mixing for an extremely wide range of hues.



### LINEAR CTO

This luminaire features continuously variable CTO (color temperature orange) correction converting cool white to tungsten and warm white.



### ANIMATION WHEEL

Providing 3D movement in the light beam, the rotating animation wheel is most effective when used in combination with gobos.



### RGB AL

This luminaire uses RGBAL color mixing to reproduce nearly any color and color temperature of white.



### RGB WAL

Featuring red, green, blue, white, amber and lime, RGBWAL multichip LEDs are eminently suitable to produce rich, saturated colors and a wide spectrum of whites with excellent CRI.



### SACN COMPATIBLE

This luminaire is compatible with the sACN (Streaming ACN) protocol developed to transport DMX data over a network.



### IRIS

The iris is an adjustable circular aperture to continuously vary the beam diameter.



### IDMX® APP CONTROL

This fixture permits wireless control from any smartphone or tablet with Cameo's iDMX® Controller App.



### DAYLIGHT

Daylight colour temperature



### NATURAL WHITE

Neutral white colour temperature



### TURNABLE WHITE

The tunable white feature allows setting of a range of white tones.



### LASER

Its marked directional impact means laser light remains bright and clearly visible over distances. Lasers are highly energy-efficient and create tightly clustered, narrow beams of light that are ideal for creating pronounced lighting effects.



### FLICKER FREE

The high-frequency control of the LEDs while dimming ensures flicker-free operation, including for filming purposes.



**EZ CHASE**

DMX EZChase is the internal delay function of the DMX control command. This enables a chase to be created with a very small number of DMX channels or even without a DMX controller entirely.



**CALIBRATION CHIP**

The calibration chip ensures that the mixed colours of the lamp are reproduced identically when using several fixtures, thereby preventing any deviations in colour between the lamps.



**SCAN FAIL SYSTEM**

Should the motors guiding the laser beam encounter an error that results in the emission of a static laser beam, the device will immediately shut down laser output.



**ETL**

This Product is ETL certified.

ARTICLE NO.							
	CLG4FC	149	CLMP3WW	109	CLS4IP	59	
CLAB1	35	CLG4FCWH	149	CLMP10WRGB	109	CLSB6D	157
CLAS200	37	CLG4N	149	CLOH5	27	CLSB6TRDM	157
CLASZ300	37	CLG4NWH	149	CLOSP5FC	19	CLSB83	157
CLAZORS2	33	CLG4T	149	CLOSP5P	17	CLSW2000	133
CLCL200G2	111	CLG4TW	149	CLOSP5PLUS	17	CLTS40WW	97
CLCPSEB	155	CLG4TWH	149	CLOTOSB5	9	CLTS60WRGBW	97
CLCPSEW	155	CLG4TWWH	149	CLOTOSH5	13	CLTS60WRGBWWH	97
CLDROPB1	69	CLH1D	147	CLOTOSSP6	11	CLTS100WW	95
CLDROPB4	69	CLH1DWH	147	CLOW5	23	CLTS200FC	95
CLDROPP4	69	CLH1FC	147	CLOXP	21	CLTS200WW	95
CLDS60	141	CLH1FCWH	147	CLOXW	25	CLTW100RGB	105
CLDS100	141	CLH1T	147	CLP2D	73	CLTW100W	105
CLDS200	141	CLH1TWH	147	CLP2FC	73	CLTW600RGB	107
CLDS400	141	CLH2D	147	CLP2T	73	CLTW600RGBW	107
CLDVC	161	CLH2DWH	147	CLPFLATPRO7G2	67	CLTW600UV	107
CLDVCCUE	161	CLH2FC	147	CLPFLATPRO12G2	67	CLTW600W	107
CLDVCPRO	161	CLH2FCWH	147	CLPFLATPRO18G2	67	CLWDMXT2	163
CLEW3	31	CLH2T	147	CLPHANTOMF3	131	CLX3D	99
CLEW7	29	CLH2TWH	147	CLPHANTOMF5	131	CLX3TW	99
CLEW7IP	29	CLIA2000PRO	129	CLPHANTOMH2	131	CLXNODE4	157
CLF1D	75	CLIDMXCORE	163	CLPST4G2	85	CLXNODE8	157
CLF1FC	75	CLIDMXSTICK	163	CLPST6G2	85	CLZB60BLSD	55
CLF1T	75	CLIF1700PRO	127	CLPSTTWG2	85	CLZB60CLSD	55
CLF2D	77	CLIF1700TPRO	127	CLQS15RGBW	101	CLZB200	57
CLF2DIP	63	CLIH1400PRO	125	CLQS15RGBWWH	101	CLZP130LSD	53
CLF2DPO	79	CLIH1500TPRO	125	CLQS15W	101	CLZW300	45
CLF2FC	77	CLIREMOTE	159	CLQS40IB	143	CLZW300I	139
CLF2FCIP	63	CLLDFFORCE3000RGB	115	CLQS40IW	143	CLZW600	45
CLF2FCPO	79	CLLDFFORCE5000RGB	115	CLQS40RGBW	103	CLZW600-D	47
CLF2T	77	CLLIODA1000RGB	117	CLQS40TW	103	CLZW600DSMD	49
CLF2TIP	63	CLLLLUKE700RGB	119	CLQS40WW	103	CLZW600I	139
CLF2TPO	79	CLLLLUKE1000RGB	119	CLROOTPAR4	87	CLZW600SMD	49
CLF4D	81	CLLUXISFC	83	CLROOTPAR4WH	87	CLZW600TW	47
CLF4DPOIP	65	CLLWOOKIE200RGY	121	CLROOTPAR6	89	CLZZ120G2	51
CLF4FC	81	CLLWOOKIE400RGB	121	CLROOTPAR6WH	89	CLZZ180G2	51
CLF4FCPOIP	65	CLMB100	39	CLROOTPARBAT	93		
CLF4T	81	CLMB200	41	CLROOTPARTW	91		
CLF4TPOIP	65	CLMBZ100	39	CLS2IP	59		







for lumen beings

**cameolight.com**



facebook.com/cameo.lighting  
youtube.com/cameolightandsound  
blog.adamhall.com

For more information please visit:

**cameolight.com**



The information contained in this publication, including numerical data, has been prepared as a general guide to the products, but intending buyers and users must satisfy themselves as to the suitability and the safety of the products for their particular purposes and duties. No responsibility is assumed for any errors herein. The company reserves the right to alter the designs and material specifications of products shown in this publication without notice.

Cameo® is a  
registered brand of

 **adam hall** experience  
event technology

**SOUND**  
TECHNOLOGY

**LIGHT**  
TECHNOLOGY

**STAGE**  
EQUIPMENT

**HARDWARE**  
FOR FLIGHTCASES

share the experience at  
**adamhall.com**