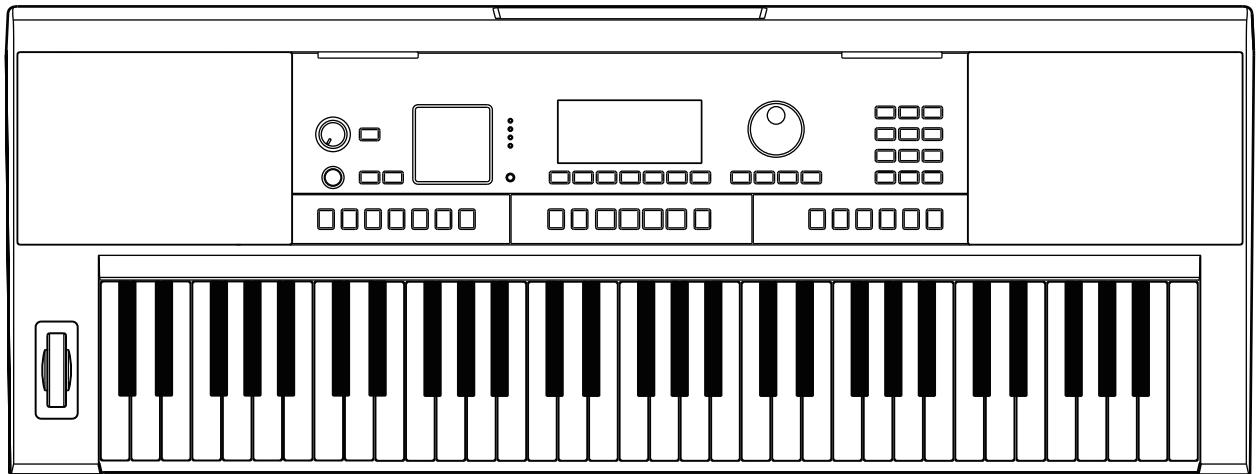


# MEDELI



## MK401

MUSIC KEYBOARD  
OWNER'S MANUAL

# INFORMATION FOR YOUR SAFETY!

## THE FCC REGULATION WARNING (for USA)

This equipment has been tested and found to comply with the limits for a Class B digital device, pursuant to Part 15 of the FCC Rules.

These limits are designed to provide reasonable protection against harmful interference in a residential installation. This equipment generates, uses, and can radiate radio frequency energy and, if not installed and used in accordance with the instructions, may cause harmful interference to radio communications. However, there is no guarantee that interference will not occur in a particular installation. If this equipment does cause harmful interference to radio or television reception, which can be determined by turning the equipment off and on, the user is encouraged to try to correct the interference by one or more of the following measures:

- Reorient or relocate the receiving antenna.
- Increase the separation between the equipment and receiver.
- Connect the equipment into an outlet on a circuit different from that to which the receiver is connected.
- Consult the dealer or an experienced radio/TV technician for help.

Unauthorized changes or modification to this system can void the user's authority to operate this equipment.

### CAUTION

The normal function of the product may be disturbed by Strong Electro Magnetic Interference. If so, simply reset the product to resume normal operation by following the owner's manual. In case the function could not resume, please use the product in other location.

## PRECAUTIONS

### PLEASE READ CAREFULLY BEFORE PROCEEDING

Please keep this manual in a safe place for future reference.

#### Power Supply

Please connect the designated DC adaptor to an AC outlet of the correct voltage.

Do not connect it to an AC outlet of voltage other than that for which your instrument is intended.

Unplug the DC power adaptor when not using the instrument, or during electrical storms.

#### Connections

Before connecting the instrument to other devices, turn off the power to all units. This will help prevent malfunction and / or damage to other devices.

#### Location

Do not expose the instrument to the following conditions to avoid deformation, discoloration, or more serious damage:

- Direct sunlight
- Extreme temperature or humidity
- Excessive dusty or dirty location
- Strong vibrations or shocks
- Close to magnetic fields

#### Interference with other electrical devices

Radios and televisions placed nearby may experience reception interference. Operate this unit at a suitable distance from radios and televisions.

#### Cleaning

Clean only with a soft, dry cloth.

Do not use paint thinners, solvents, cleaning fluids, or chemical-impregnated wiping cloths.

#### Handling

Do not apply excessive force to the switches or controls.

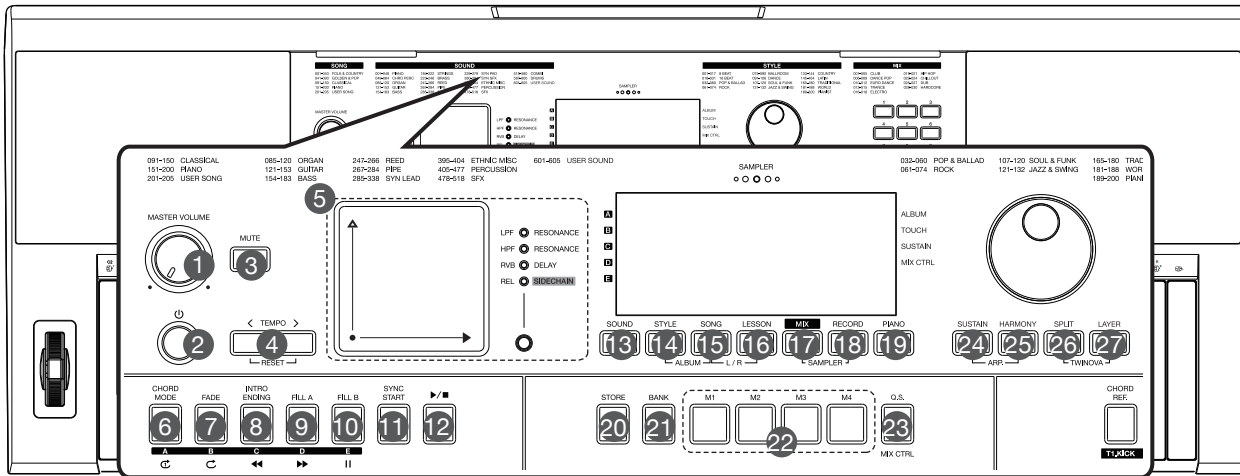
Do not let paper, metallic, or other objects into the instrument. If this happens, remove the electric plug from the outlet. Then have the instrument inspected by qualified service personnel.

Disconnect all cables before moving the instrument.

<b>Panel &amp; Display Description</b>		<b>Using Lesson Mode</b>	
Front Panel.....	4	Lesson 1.....	17
Touch Pad.....	5	Lesson 2.....	17
LCD.....	6	Lesson 3.....	17
Rear Panel.....	6		
<b>Quick Start</b>		<b>Playing Mix</b>	
Turn the Power On or Off.....	7	Mix Sections.....	18
Adjust the Master Volume.....	7	Mix Tracks.....	18
Playing Demo.....	7		
<b>Playing Sound</b>		<b>Chord Reference.....</b>	<b>18</b>
Layer Mode.....	8		
Split Mode.....	9	<b>Recording</b>	
Sustain.....	9	MIDI Recording.....	19
Pitch Bend.....	9	Audio Recording.....	19
<b>Piano Mode.....</b>	<b>9</b>		
<b>Twinova.....</b>	<b>10</b>	<b>Connecting an SD Card</b>	
<b>DSP Effect.....</b>	<b>10</b>	Basic Operations.....	20
<b>Using Sampler.....</b>	<b>11</b>	Playing back Files Saved on SD Card.....	21
		Loading Files from the SD Card.....	21
<b>Performance Enhancement</b>		Saving Files to the SD Card.....	21
Arpeggiator.....	12	Formatting the SD Card.....	22
Harmony.....	12		
<b>Playing Style</b>		<b>Performance Memory.....</b>	<b>22</b>
Chord Mode.....	13	<b>Mixer.....</b>	<b>23</b>
Fade.....	14	<b>Function Menu.....</b>	<b>24</b>
Tempo.....	14	<b>Factory Reset.....</b>	<b>26</b>
Quick Setting.....	15	<b>Troubleshooting.....</b>	<b>26</b>
<b>Metronome.....</b>	<b>15</b>	<b>Specifications.....</b>	<b>27</b>
<b>Song Album.....</b>	<b>16</b>		
<b>Playing Songs</b>		<b>Appendices</b>	
Song Control.....	16	Sound List.....	28
Song Volume.....	16	Style List.....	34
		Song List.....	36
		Album List.....	38
		Mix Pattern List.....	41
		Demo List.....	42
		Chord List.....	42
		MIDI Implementation Chart.....	43

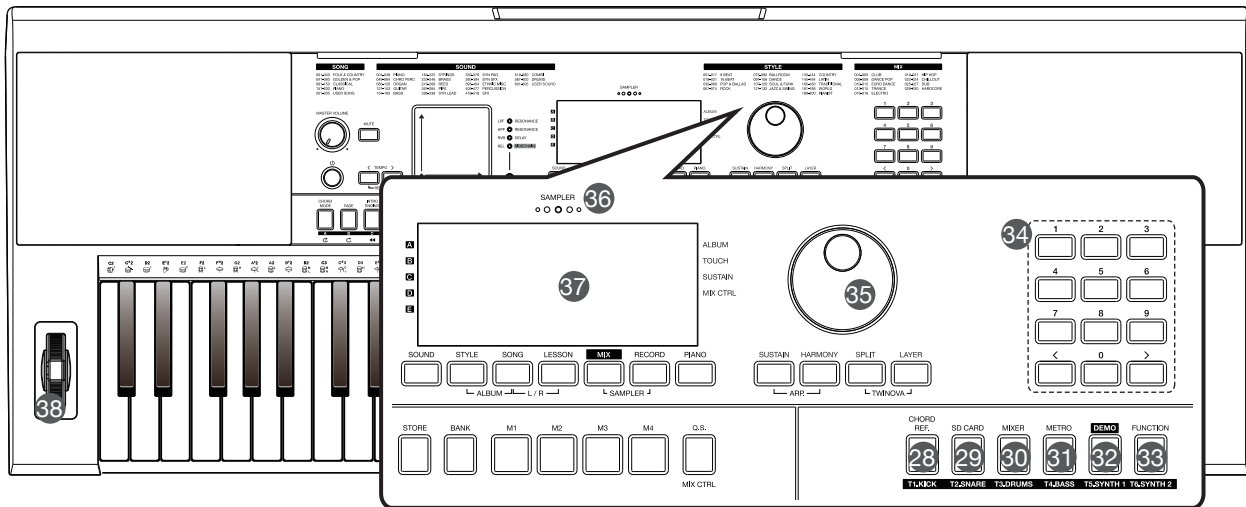
# Panel & Display Description

## Front Panel



1. **[MASTER VOLUME] Knob:**  
Adjust the master volume.
2. **[POWER] Button:**  
Switch the power on or off.
3. **[MUTE] Button:**  
Mute or unmute the master volume.
4. **[TEMPO </>] Buttons:**  
Adjust the current tempo.  
Press [**<**] and [**>**] at the same time to reset to the default tempo.
5. **Touch Pad and [EFFECT] Button:**  
Press the [EFFECT] button to select a group of parameters, and then use the Touch pad to control the selected parameters in real time.
6. **CHORD MODE Button:**  
**Style mode:** Select Fingered mode or Full Range mode.  
**Mix mode:** Press this button to select Section A. Long-press this button to engage slicer on Section A.  
**Song mode:** Loop playing the currently selected song.
7. **[FADE] Button:**  
**Style mode:** Turn Fade In/Fade Out on or off.  
**Mix mode:** Press this button to select Section B. Long-press this button to engage slicer on Section B.  
**Song mode:** Loop playing all preset songs.
8. **[INTRO/ENDING] Button:**  
**Style mode:** Play an intro or ending pattern.  
**Mix mode:** Press this button to select Section C. Long-press this button to engage slicer on Section C.  
**Song mode:** Rewind the song playback.
9. **[FILL A] Button:**  
**Style mode:** Play the fill-in pattern A.  
**Mix mode:** Press this button to select Section D. Long-press this button to engage slicer on Section D.  
**Song mode:** Fast-forward the song playback.
10. **[FILL B] Button:**  
**Style mode:** Play the fill-in pattern B.  
**Mix mode:** Press this button to select Section E. Long-press this button to engage slicer on Section E.  
**Song mode:** Pause or continue the song playback.
11. **[SYNC START] Button:**  
Turn the sync start function on or off.
12. **[START/STOP] Button:**  
Start or stop playing a style, song, or mix pattern.
13. **[SOUND] Button:**  
Enter Sound mode.
14. **[STYLE] Button:**  
Enter Style mode. Press [STYLE] and [SONG] buttons at the same time to enter Album mode.
15. **[SONG] Button:**  
Enter Song mode. Press [SONG] and [STYLE] buttons at the same time to enter Album mode.
16. **[LESSON] Button:**  
When song playback is stopped, press this button to enter or exit Lesson mode. Press [LESSON] and [SONG] buttons at the same time to select a hand-part for practice in this circulation: L → R → L+R.
17. **[MIX] Button:**  
Enter Mix mode. Press [MIX] and [RECORD] buttons at the same time to engage the sampler.
18. **[RECORD] Button:**  
Enter Record mode.
19. **[PIANO] Button:**  
Turn Piano Mode on or off.
20. **[STORE] Button:**  
Hold this button then press one of the [M1] - [M4] buttons to save the panel settings to that button.
21. **[BANK] Button:**  
Select a memory bank.
22. **[M1] - [M4] Buttons:**  
**In Memory mode:** Press one of these buttons to recall panel settings.  
**In Q.S. mode:** Press one of these buttons to recall Sound settings that match the current style.
23. **[Q.S.] Button:**  
Turn Q.S. function on or off. In Mix mode, press this button to switch between the primary and secondary functions of the track buttons.
24. **[SUSTAIN] Button:**  
Turn the panel sustain on or off. Press [SUSTIAN] and [HARMONY] buttons at the same time to turn the arpeggiator on or off.
25. **[HARMONY] Button:**  
Turn the harmony function on or off.
26. **[SPLIT] Button:**  
Turn the split function on or off. Press [SPLIT] and [LAYER] buttons at the same time to turn Twinova function on or off.
27. **[LAYER] Button:**  
Turn the layer function on or off.

## Front Panel



- 28. **[CHORD REF.] Button:**  
Turn the chord reference function on or off.  
In Mix mode, mute or unmute KICK track in playback.
- 29. **[SD CARD] Button:**  
Enter the SD card menu.  
In Mix mode, mute or unmute SNARE track in playback.
- 30. **[MIXER] Button:**  
Enter the Mixer menu.  
In Mix mode, mute or unmute DRUMS track in playback.
- 31. **[METRO] Button:**  
Turn the metronome on or off.  
In Mix mode, mute or unmute BASS track in playback.
- 32. **[DEMO] Button:**  
Enter Demo mode.  
In Mix mode, mute or unmute SYNTH1 track in playback.
- 33. **[FUNCTION] Button:**  
Enter the function menu.  
In Mix mode, mute or unmute SYNTH2 track in playback.
- 34. **[<] / [>], Numeric Buttons:**  
Select a value or adjust a parameter.  
Press [**<**] and [**>**] at the same time to reset current parameter to its default setting.
- 35. **Data Dial:**  
Select a value or adjust a parameter.
- 36. **Built-in Microphone:**  
Record user sound when the sampler is engaged.
- 37. **LCD:**  
Display important setting information of the instrument.
- 38. **Pitch Bend Wheel:**  
Roll it to apply pitch-bending effect.

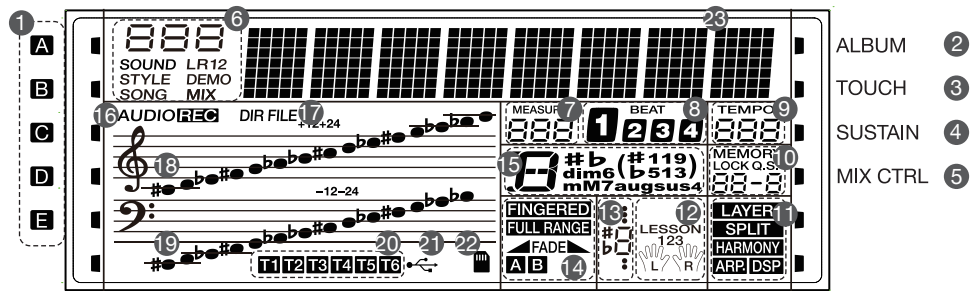
## Touch Pad

The Touch pad controls vibrato depth and speed by default when no effect LED is lit. Press the [EFFECT] button repeatedly to circulate through different sets of effects. When you select one from the 2-5 sets, the corresponding effect LED will turn on. After selecting a set of effects, use the Touch pad to control these effects in real time.

No.	X-axis	Target	Y-axis	Target
1	Vibrato Speed		Vibrato Depth	
2	LPF	Global	Resonance (LPF)	Global
3	HPF	Global	Resonance (HPF)	Global
4	Reverb	Global	Delay	Channel
5	Release	Channel	Sidechain Comp	Channel

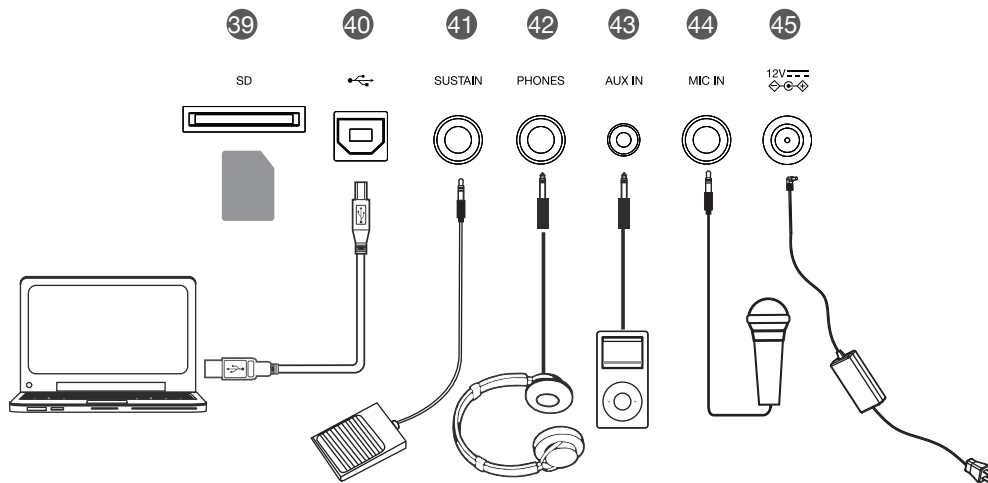
# Setup

## LCD



- |                              |                                  |                     |
|------------------------------|----------------------------------|---------------------|
| 1. MIX MODE SECTIONS         | 8. BEAT                          | 16. AUDIO RECORDING |
| 2. ALBUM                     | 9. TEMPO                         | 17. RECORDING FILE  |
| 3. TOUCH                     | 10. MEMORY/QUICK SETTING         | 18. TREBLE CLEF     |
| 4. SUSTAIN                   | 11. LAYER/SPLIT/HARMONY/ARP/DSP  | 19. BASS CLEF       |
| 5. MIX CONTROL               | 12. LEFT/RIGHT HAND LESSON MODE  | 20. MIX MODE TRACKS |
| 6. SOUND/STYLE/DEMO/SONG/MIX | 13. NUMBER MUSICAL NOTATION      | 21. USB             |
| 7. MEASURE                   | 14. FINGERED/FULL RANGE/FADE/A/B | 22. SD CARD         |
|                              | 15. CHORD                        | 23. CHARACTER       |

## Rear Panel



- |  |   |
|--|---|
| 39. SD Card port: For inserting an SD Card.  | 41. SUSTAIN Jack: For connecting a sustain pedal.                                   |
| 40. USB Port: For connecting to a computer or a mobile device.   | 42. PHONES Jack: For connecting a pair of headphones.                               |
| <b>Note:</b><br>This port functions as USB MIDI to send/receive information data, or USB Audio to send/receive audio data, from/to an external device. | 43. Aux IN Jack: For connecting external audio source, such as an MP3 or CD player. |
|  | 44. MIC IN Jack: For connecting a microphone.                                       |
|  | 45. Power Jack: For connecting the specified power adapter.                         |

## Turning the Power On or Off

Press the [POWER] button to turn on the power. The LCD will be lit.  
Press this button again to turn off the power.



### Notes:

1. You can power the instrument either by using the included power adapter or by using batteries. If you're using batteries, open the battery compartment cover on the bottom of the instrument, insert the batteries, then replace the compartment cover firmly. Do not mix used and new batteries. Remove the batteries from the instrument when it is not in use.
2. To conserve energy, the instrument is designed to automatically turn off after 15 minutes of inactivity. You can change this setting in the function menu.
3. Please note that the instrument may consume more power when this function is disabled.  
Power consumption after the instrument automatically turns off: < 0.3W (less than 0.3W)

## Adjusting the Master Volume

Rotate the [MASTER VOLUME] knob clockwise to increase the master volume or counter-clockwise to decrease it.



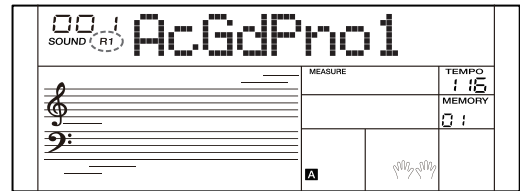
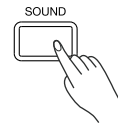
## Playing Demo

Press the [DEMO] button to enter Demo mode. It will start playing all demos in a continuous loop. The LCD shows the current demo name and number. Use the data dial or [<] / [>] buttons to select a demo. To stop demo playback and exit, press the [START/STOP] or the [DEMO] button.



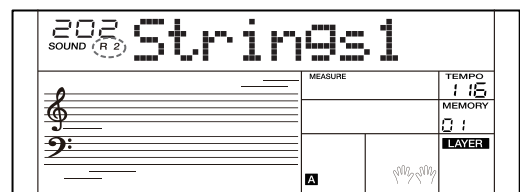
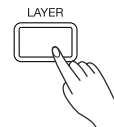
# Playing Sound

1. Press the [SOUND] button to enter Sound mode. The “R1” indicator lights up. The LCD shows the current Sound name and number.
2. Use the data dial or [<] / [>] buttons to select a Sound. Or use the numeric buttons to enter a preset Sound number.
3. Play the keyboard to use this Sound for performance.



## Layer Mode

1. Press the [LAYER] button to enter Layer mode. The “R2” indicator lights up. The LCD shows the current layer sound name and number.
2. Use the data dial or [<] / [>] buttons to select a layer sound. Or use the numeric buttons to enter a preset sound number.
3. Play the keyboard. You will hear two different sounds playing together.
4. In Layer mode, press the [LAYER] button to exit this mode.



## Split Mode

1. Press the [SPLIT] button to enter Split mode. The “L” indicator lights up. The LCD shows the current split sound name and number.  
The default split point is F#3 (19). You can change the split point in the function menu.
2. Use the data dial or [ < ] / [ > ] buttons to select a split sound. Or use the numeric buttons to enter a preset sound number.
3. Play the keyboard. You will hear different sounds from the left and right hand sections.
4. In Split mode, press the [SPLIT] button to exit this mode.

### Note:

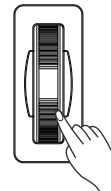
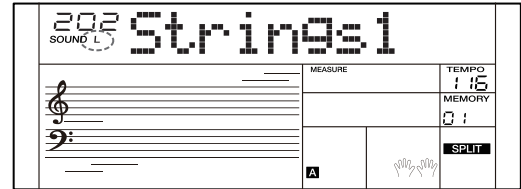
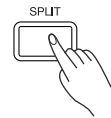
When layer and split sounds are in use, only the right hand area plays the layered sound. Use the mixer to adjust the volume of each part.

## Sustain

Press the [SUSTAIN] button to turn panel sustain on or off. Or connect a sustain pedal to this instrument and use the pedal to produce a smoother sustain.

## Pitch Bend

When you're playing the keyboard, roll the pitch bend wheel upward or downward to apply pitch-bending effect to the notes.



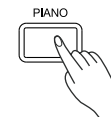
# Piano Mode

Press the [PIANO] button to enter or exit Piano Mode.

In Piano Mode, all parameters become optimized for concert piano performance. You can start style playback, but it plays the rhythm track only.

### Notes:

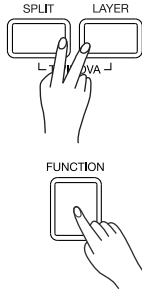
1. When enter Piano Mode, the Fingered function will be automatically turned off.
2. In Piano Mode, the Layer and Split functions will not be available.



# Twinova

Twinova function splits the keyboard into two areas with the same sound and octave range, for the convenience of playing together with a friend or instructor.

1. Press [SPLIT] and [LAYER] buttons at the same time to turn Twinova on or off. The default split point is E4 and F4.
2. Changing the Twinova octave.  
Press the [FUNCTION] button to enter the function menu. Use the data dial to select "TwinoOct", then use [<] / [>] buttons to change the octave setting. Pressing [<] and [>] buttons at the same time will reset to the default octave setting.



## Notes:

The Twinova mode and the split / layer functions cannot be used at the same time.

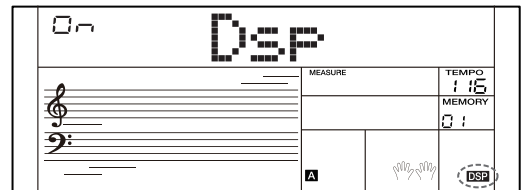
# DSP Effect

DSP is turned on by default. The "DSP" indicator lights up on LCD. To change the DSP setting, press the [FUNCTION] button to enter the function menu. Then use the data dial to select "DSP". The LCD will temporarily show "DSP ON". Use the [<] / [>] buttons to turn the DSP on or off. Pressing [<] and [>] buttons at the same time will reset to the default setting.



## Note:

There may be a slight pause in the sound if you switch the DSP effect on/off while style or song is playing.



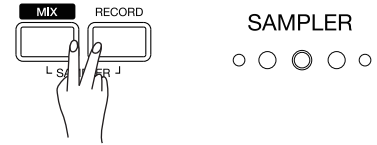
# Using Sampler

You can record sounds by using the built-in microphone located above the LCD and then play the keyboard to use them. The sounds will be stored at the end of sound library. Each sample can be recorded up to 2 seconds.

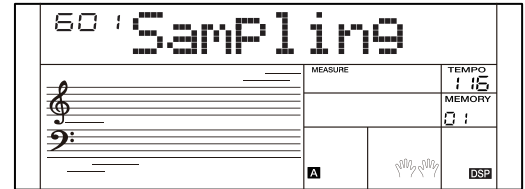
## Recording User Sample

1. Press [MIX] and [RECORD] buttons simultaneously to enter Sampler mode.

Now, it's "Standby" state, the LCD displays "Standby" and the center LED light flashes.



2. Use the data dial to select a slot to save the sample.
3. After selecting the slot, the sampler will be triggered by the sound directly. When the sampler is triggered, the LCD will show "Sampling". When sampling is finished, the LCD will show "Finished".  
When the sound volume reaches the trigger level, sampling will start automatically.  
When the sound volume drops under the trigger level or when the recording time reaches 2 seconds, it will stop automatically and save the sound.
4. The pitch correction function is turned on by default. The sampled pitch will be automatically recognized and corrected to the closest key pitch. When it is turned off, the sampled pitch will be corrected and set as C4. You can turn this function on or off in the function menu.

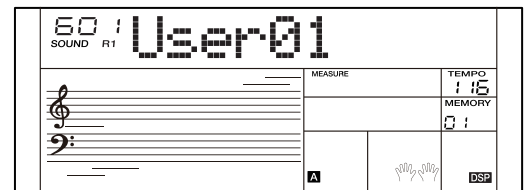


### Note:

The next available empty slot will be selected automatically before the next sampling starts. For example, if the first slot has data, the second slot will be automatically selected. If all slots are used up, the first slot will be selected. Please note that when sampling again on the slot with data, the original data will be overwritten.

## Playing User Sample

1. After sampling, it will go back to normal mode automatically. LCD will display the sample you've just recorded.
2. Play the keyboard to use this sample for performance.
3. You can switch the user sample by using the numeric buttons, [<] / [>] buttons or the data dial.
4. You can play the sample with effects when Touch Pad effect is in use.



## Deleting User Sample

Hold down [<] and [>] buttons, then turn on the power. All user data will be deleted.

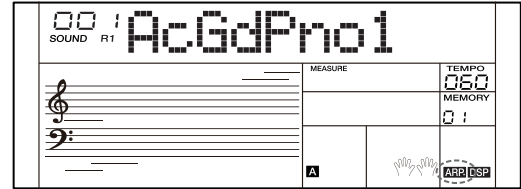
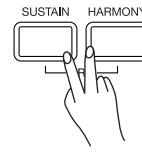
# Performance Enhancement

## Arpeggiator

Press the [SUSTAIN] and [HARMONY] buttons at the same time to turn on the arpeggiator. The “ARP.” indicator lights up on LCD. Repeat this operation to turn off the arpeggiator.

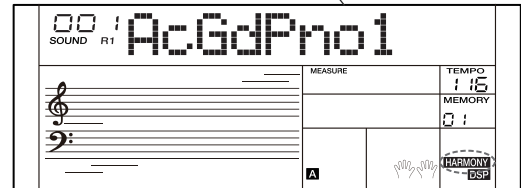
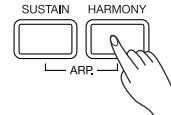
### Arpeggiator split point

When the arpeggiator is in use, the keyboard will be split into two sections. Play chords in the left hand section, and play melody in the right hand section. The default split point is F#3 (19) (same as the split point in Split mode). You can change the split point in the function menu.



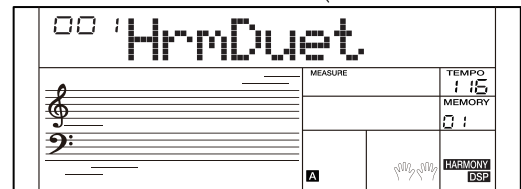
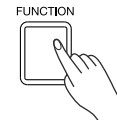
## Harmony

Press the [HARMONY] button to turn this function on or off. When harmony is in use, the “HARMONY” indicator will light up on LCD. Turn on the Fingered function, then play a chord in the chord section. When you play in the right hand section, it will add harmony effect to the notes.



### Setting the harmony type

Press the [FUNCTION] button to enter the function menu. Use the data dial to select “HrmXXXX”, then use the [<] / [>] buttons to change the harmony type. Pressing [<] and [>] buttons at the same time will reset to the default setting.

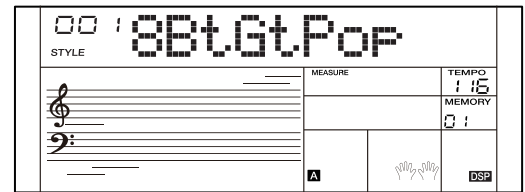
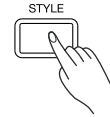


### Notes:

Harmony types “1+5” and “octave” are always available, but the rest will not work until you turn on the Fingered function and then play a chord in the chord section.

# Playing Style

1. Press the [STYLE] button to enter Style mode. LCD shows the current style name and number.
2. Use the data dial or [<] / [>] buttons to select a style. Or use the numeric buttons to enter a preset style number.
3. Press the [START/STOP] button to start the rhythm track. Or press the [SYNC START] button to engage sync start function, then play a key on keyboard to start the rhythm track.



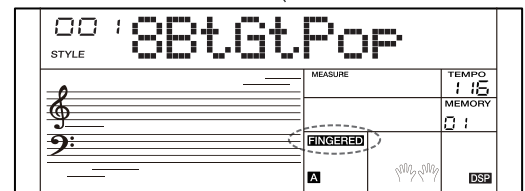
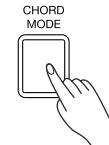
## Chord Mode

### Entering Chord Mode

Press the [CHORD MODE] button to enter Chord mode. Press the [CHORD MODE] button repeatedly to circulate between “FINGERED → FULL RANG” → OFF”.

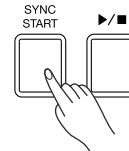
In FINGERED mode, the keyboard is divided into two sections. The chord section is in the left hand area. You can play Single Finger and Multi Finger chords in the chord section.

In Full Range mode, the entire keyboard is chord section. Only Multi Finger chords will be detected in the chord section.



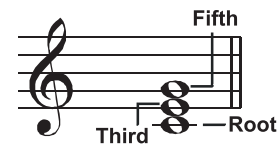
### Playing in Chord Mode

1. Press the [SYNC START] button to engage the sync start function.
2. Play a chord in the chord section, it will start playing auto accompaniment of all tracks. Or press the [START/STOP] button to start percussion playback, then play a chord in the chord section to start playing all tracks.



## Chord Basics

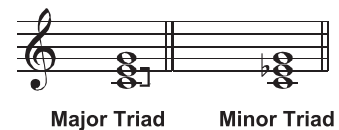
A chord, in music, is a harmonic set of three or more notes that are heard simultaneously. The most common type of chord is a triad. A triad is a set of three notes that can be stacked in thirds. When arranged this way, the triad's notes, from lowest pitched to highest, are called: the Root, the Third, and the Fifth.



### Triad Type

The basic triad types are as follows:

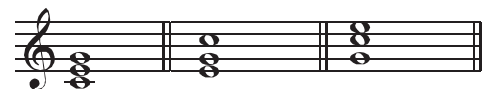
Major Triad	A root with a major third added above and a perfect fifth constitutes a “Major Triad”.
Minor Triad	A root with a minor third added above and a perfect fifth constitutes a “Minor Triad”.
Augmented Triad	A root with a major third added above and an augmented fifth constitutes an “Augmented Triad”.
Diminished Triad	A root with a minor third added above and a diminished fifth constitutes a “Diminished Triad”.



Diminished Triad Augmented Triad

### Chord Inversion

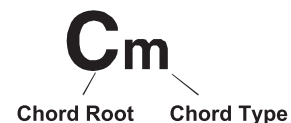
When a chord's root is not the lowest note in the triad, it is called an inversion chord. When the root note is the lowest note, it is called a root-position chord. If we put the Third and Fifth in the root position, it forms an “Inversion”, so it is called an “Inverted Chord”. A major triad and its inversion are illustrated on the right.



Root Position First Inversion Second Inversion

### Chord Name

The chord name consists of two parts: Chord root and Chord type.



# Playing Style

## Single Finger

Single-finger makes it easy to produce major, seventh, minor and minor seventh chords by pressing a minimum number of keys on the auto accompaniment section.





## Multi-finger

Multi-finger allows you to play chords in normal fingering. Try playing the 32 types of C chords listed on the right.

## Full Range

In Full Range mode, it detects chords played in normal fingering (Multi-finger) over the entire keyboard range.

chord list 详见 Appendices

	<b>★Major Triad</b> Only press the root note on the keyboard.
	<b>★Minor Triad</b> Press the root note and the nearest left black key simultaneously.
	<b>★Seventh chord</b> Press the root note and the nearest left white key simultaneously.
	<b>★Minor seventh chord</b> Press the root note and the nearest left white and black keys simultaneously.

## Fade

When style is stopped, press the [FADE] button to turn on the fade-in function. The “FADE” indicator lights up on LCD. When style starts playing, the volume will increase from low to high.

During style playback, press the [FADE] button to turn on the fade-out function. The volume will decrease from high to low until the style is stopped.

The default fade-in / fade-out time setting is 10 seconds. You can change this time setting in the function menu.



The LCD display shows the style name '8BtGtPop' in a large font. Below it, there are fields for 'STYLE', 'MEASURE', 'TEMPO' (116), and 'MEMORY' (01). A 'FINGERED' indicator is lit, and a 'FADE' indicator is also lit. There are icons for 'A' and 'DSP'.

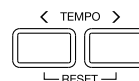
## Tempo

Press the [TEMPO </>] buttons to edit the tempo value. When the tempo value is blinking on LCD, use the [TEMPO </>] buttons, [<] / [>] buttons or the data dial to change the tempo value.

Press [TEMPO <] and [TEMPO >] at the same time to reset to the default tempo.

### Note:

When style playback is stopped, changing the style will automatically reset the tempo. However, changing the style during style playback will not result in tempo change.



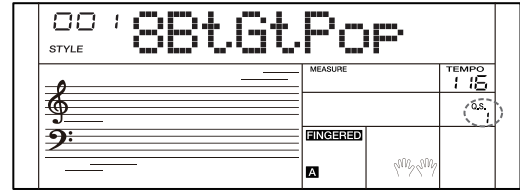
The LCD display is similar to the previous one, but the 'TEMPO' value '116' is now blinking. The 'FADE' indicator is no longer lit. The 'FINGERED' indicator is still lit.

## Quick Setting

1. Press [Q.S.] button to turn on this function. The “Q.S.” indicator lights up on LCD. The Fingered function is turned on automatically.
2. Press one of the [M1] - [M4] buttons to recall panel settings (including sound and effects) that match the current style. Each style has 4 preset Q.S. settings.

**Note:**

Memory function is not available when Q.S. is in use.



# Metronome

## Turning the metronome on or off

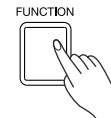
1. Press the [METRO] button to turn on the metronome. The beat indicators on LCD will blink and you will hear the metronome sound.
2. Press this button again to turn off the metronome.



## Changing the metronome beat

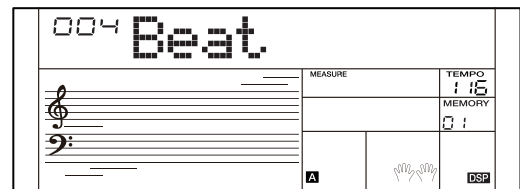
The default metronome beat is “4”, but you can change it in the function menu.

1. Press the [FUNCTION] button, then use the data dial to select “Beat”.
2. Use the [<] / [>] buttons to change the beat setting. The setting range is 0, 2 ~ 9.



**Notes:**

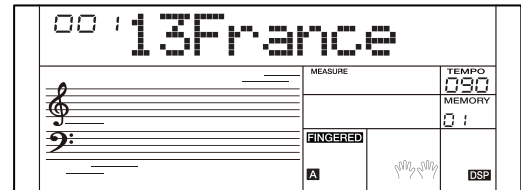
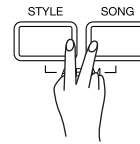
1. If you turn on the metronome during style playback, the metronome sound will start from the next beat. Its time signature and tempo will be reset to match the selected style.
2. If you turn on the metronome during MIDI recording, the metronome sound will not be recorded. But if you turn on the metronome in Audio recording, the metronome sound will be recorded.



# Song Album

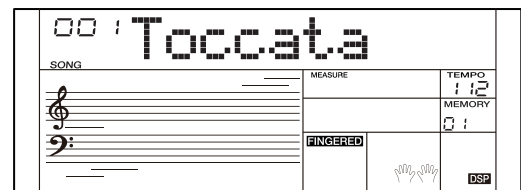
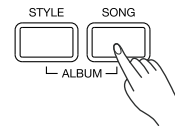
This function lets you practice a song with a preset style, tempo and sound. Please refer to the Album List for details.

1. Press the [STYLE] and [SONG] buttons at the same time to turn on this function. LCD shows the current album name and number.
2. Use the data dial or [<] / [>] buttons to select a desired album. This will reset song parameters such as style, tempo and sound for best performance.
3. Press the [SOUND] or [STYLE] button to turn off this function.



# Playing Songs

1. Press the [SONG] button to enter Song mode. LCD shows the current song name and number.
2. Use the data dial or [<] / [>] buttons to select a song. Or use the numeric buttons to enter a song number.
3. Press the [START/STOP] button to start playing the song.
4. During song playback, press the [START/STOP] button to stop. When playback is stopped, press the [STYLE] / [RECORD] buttons to exit this mode.



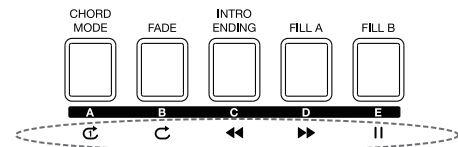
### Note:

By default, it will loop playing all the songs. You can change the playback mode in the function menu.

## Song Control

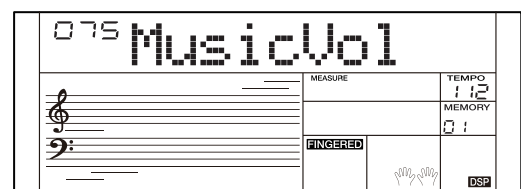
Before the Intro section begins, the measure will start counting from a negative value. When the measure goes to "1", the melody will start playing. You can use these buttons to control the playback:

- Press the [C] button to play the current song in a continuous loop.
- Press the [C] button to play all songs in a continuous loop.
- Press the [◀◀] button to rewind the song.
- Press the [▶▶] button to fast forward the song.
- Press the [||] button to pause the song. Press this button again to continue the playback.



## Song Volume

You can adjust the song playback volume in the mixer menu. Press the [MIXER] button to enter the Mixer menu. Use the data dial to select "MusicVol", then use the [<] / [>] buttons to change the volume setting. Pressing [<] and [>] buttons at the same time will reset to the default volume.



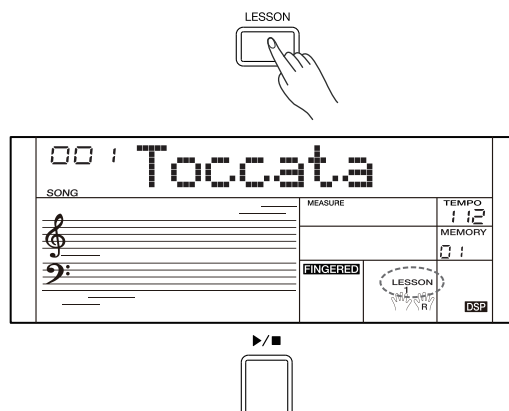
# Using Lesson Mode

The [LESSON], [L/R] buttons are available only when song playback is stopped.

## Lesson 1

In Lesson 1, you will learn to play at the correct timing. As long as you play a key at the right time, the correct note will sound.

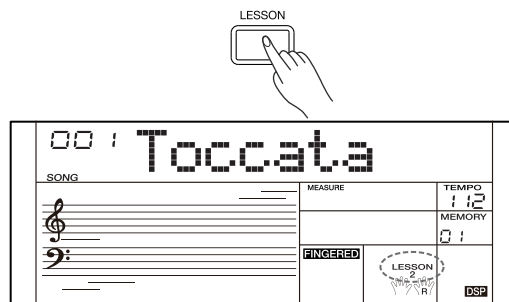
1. When song playback is stopped, press the [LESSON] button to enter Lesson 1. The “LESSON 1” indicator will light up.
2. Repeatedly press the [SONG] and [LESSON] buttons to select to practice the L hand part, R hand part or both parts.
3. Press the [START/STOP] button to start the lesson.  
Your performance will be evaluated when the lesson is finished.  
No score will be given if you stop half way.



## Lesson 2

In Lesson 2, you will learn to play the correct notes. If you play a wrong note, the lesson will stop and wait, until you correctly play the note displayed on LCD.

1. When song playback is stopped, press the [LESSON] button twice to enter Lesson 2. The “LESSON 2” indicator will light up.
2. Repeatedly press the [SONG] and [LESSON] buttons to select to practice the L hand part, R hand part or both parts.
3. Press the [START/STOP] button to start the lesson.  
Your performance will be evaluated when the lesson is finished.



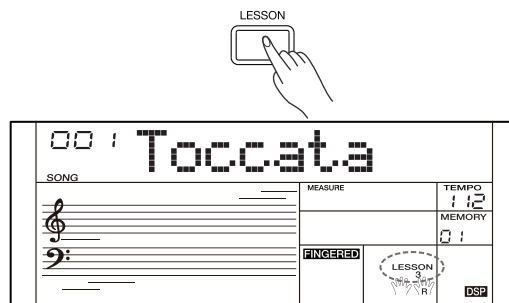
### Note:

In Lesson 2, it will not sound the notes until you play it correctly on the keyboard.

## Lesson 3

In Lesson 3, you will learn to play the correct notes at the correct timing.

1. When song playback is stopped, press the [LESSON] button three times to enter Lesson 3. The “LESSON 3” indicator will light up.
2. Repeatedly press the [SONG] and [LESSON] buttons to select to practice the L hand part, R hand part or both parts.
3. Press the [START/STOP] button to start the lesson.  
Your performance will be evaluated when the lesson is finished.



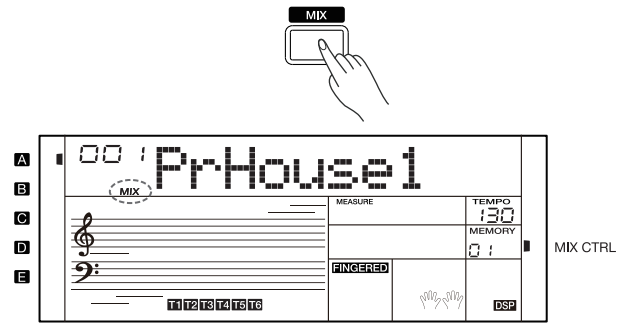
### Note:

In Lesson 3, all notes you play will sound. But if you don't press any keys on the keyboard, it will only play back the accompaniment.

# Playing Mix

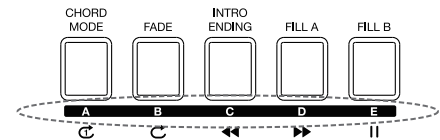
Mix mode consists of Pattern, Section and Tracks. Pattern is a song structure and includes 5 sections. The tracks are 6 separate instrument tracks in each section that you can turn on or off.

1. Press the [MIX] button to enter Mix mode. The LCD shows the current Mix pattern name and number. Sync Start function will be engaged.
2. Press the [START/STOP] button, or press any key in the chord section on the left hand side. It will immediately start playing the Mix Pattern. Use the [<] / [>] buttons to change the Mix Pattern.
3. During Mix playback, press the [START/STOP] button to stop. When playback is stopped, press [STYLE] / [SONG] buttons to exit this mode.



## Mix Sections

1. During Mix playback, press the [A] - [E] buttons to shift between these sections. The LCD indicators will show the currently selected section.
2. During Mix playback, if you long-press the button of the currently selected Section, it will apply slicer effect to this Section. The instrument provides two kinds of slicers in the function menu.



## Mix Tracks

During Mix playback, you can use the track buttons [T1] - [T6] to turn the corresponding track on or off (mute/unmute). The Track on/off information is displayed on LCD.

In Mix mode, you can press the [MIX CTRL] button to shift the track buttons back to their primary functions (the silk printing above these buttons). The "MIX CTRL" indicator will turn off.

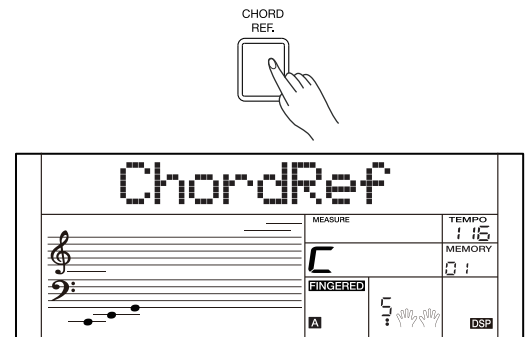


# Chord Reference

1. Press the CHORD REF. button to turn on this function. The LCD shows "ChordRef". The Fingering function will be automatically turned on.
2. Use the keys C4~B5 to assign the chord type. Use the keys C6~B6 to assign the chord root. When the chord type and chord root are assigned, the LCD will show the chord name and chord notes. Try to play this chord in the chord section.

Detailed chord types in the Chord Reference:

Note	Chord Root	Note	Chord Type	Note	Chord Type
C6	C	C4	M	C5	7(b9)
C#6	C#/Db	C#4	M(9)	C#5	7(9)
D6	D	D4	6	D5	7(#9)
Eb6	Eb/D#	Eb4	mM7	Eb5	7(b13)
E6	E	E4	M7	E5	7(13)
F6	F	F4	M	F5	7(#11)
F#6	F#/Gb	F#4	M(9)	F#5	dim7
G6	G	G4	M6	G5	dim
Ab6	Ab/G#	Ab4	M7(9)	Ab5	7aug
A6	A	A4	M7	A5	aug
Bb6	Bb/A#	Bb4	M7b5	Bb5	7sus4
B6	B	B4	7	B5	sus4

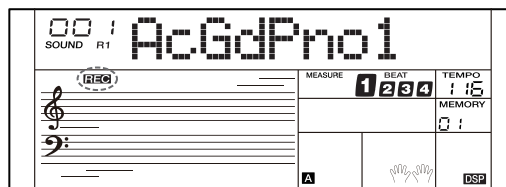


## MIDI Recording

In MIDI recording, you can save your recording as a user song on the instrument, or export it to a connected SD card. The saved user songs will not be lost when you turn off the power.

### Prepare and Start Recording

1. Press the [RECORD] button to enter the user song menu. The LCD shows the current user song number, such as “001 RecSong”. If there’s no user song, the LCD will show “No File!”. Use the data dial or [<] / [>] buttons to select a user song to save your recording.
2. Press the [RECORD] button again to engage the recorder. The “REC” indicator will light up. The beats on LCD start blinking. Now you can select the desired sound, style, tempo etc.
3. Press the [START/STOP] button or simply play the keyboard to start recording. Alternatively, turn on the Fingered function. Recording will start when you play a chord in the chord section.



### Stop Recording

During recording, press the [RECORD] button. It will stop recording and save the recorded song automatically.

If the storage become used up during recording, recording will stop and be saved automatically.

If you are recording with accompaniment, recording will stop when the ending section is finished.

### Note:

If the selected user song has data, the previous data will be overwritten by new recording.

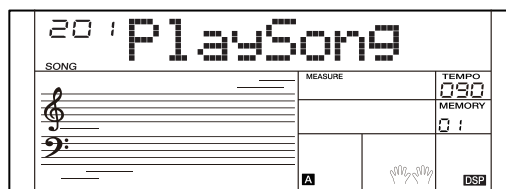
### Play back Recording

1. After recording, the recorded song will be automatically selected. Or press [SONG] to enter the Song interface, then use data dial or [<] / [>] buttons to select a user song.
2. Press the [START/STOP] button to start the playback.

### Delete Recording

Hold down the [RECORD] and [SONG] buttons at the same time, then turn on the power. This operation will delete all user songs.

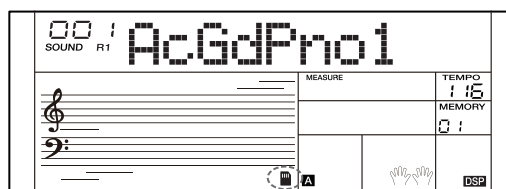
Alternatively, hold down the [<] and [>] buttons at the same time, then turn on the power. This operation will delete all user data on the instrument.



## Audio Recording

In audio recording, you can save your recording as a WAV file to the connected SD card.

1. Connect an SD card to the SD card port on the instrument. The SD card indicator will light up on the LCD when it is recognized. This instrument will automatically engage audio recording, and will save the recorded song to the root directory of the connected SD card. Now you can select the desired panel settings and be prepared for the recording.

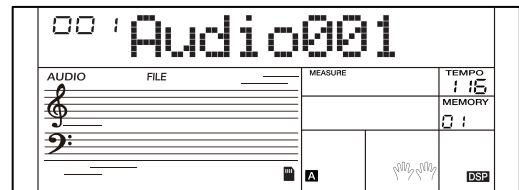
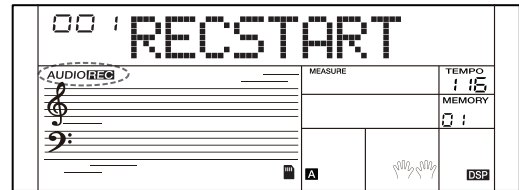


## Recording

2. Press the [RECORD] button to start recording. The LCD will temporarily show “RECSTART”. This button LED and the “AUDIO REC” indicator will light up. All the sounds that you hear from the instrument will be recorded, such as accompaniment, keyboard sounds, song playback, demo playback, music from Aux In, vocal singing from the connected microphone etc.
3. To stop recording, press the [RECORD] button. The button LED and “AUDIO REC” indicator will turn off. The recorded song will be saved in the SD card, and be named as “Audio xxx.wav”. Then the LCD will automatically show the name of the recorded song.
4. Press the [START/STOP] button to play back this recorded song. Alternatively, you can select to play back the recorded song from the SD card play menu. See Connecting an SD Card for details.

### Note:

Do not remove the SD card or turn off the power when song saving is in progress, otherwise, it may cause damage to the audio files and the SD card.



## Connecting an SD Card

The instrument recognizes SD cards in FAT32 format. It does not support multi-partitioned SD cards. We recommend formatting the SD card on the instrument before using. Do not edit the backup files saved on the SD card from the instrument.

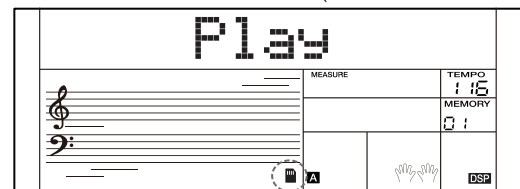
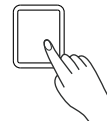
### Note:

An SD card in FAT32 format supports up to 512 files under its root directory. Exceeding this limit will make it unable to save or record to the SD cards.

## Basic Operations

1. When the connected SD card is successfully recognized, the SD card indicator will light up on LCD. Now press the [SD CARD] button to enter the play menu.  
If the connected SD card is not yet recognized, the LCD will show “WAIT...!”. If the SD card recognition fails, the LCD will show “DiskErr!”. If no SD card is inserted, the LCD will show “NoDisk!”, then return to the previous screen.
2. When it's in the play menu, you can use the data dial to select the other menus: “Save”, “Load” and “Format”. Then, press [→] to proceed or press [←] to go back.
3. When playing back a MIDI file, you can adjust the playback volume by editing this parameter “MusicVol” in the mixer menu.
4. Press the [SD CARD] / [SONG] / [STYLE] buttons to exit this mode.

SD CARD

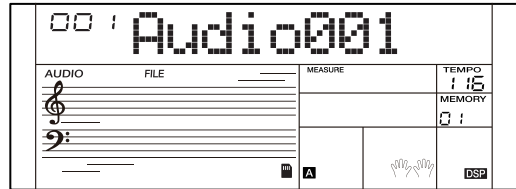
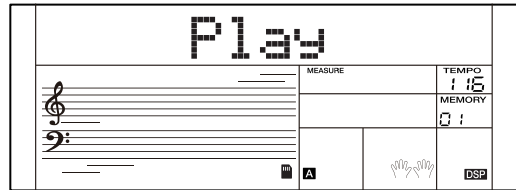


## Playing Back Files Saved on SD Card

1. Press the [SD CARD] button to enter SD card mode, then use the data dial to select “Play”.
2. Press the [>] button, and it will show all the MIDI and WAV files under the root directory of the SD card.
3. Use the data dial to select a file.
4. Press the [START/STOP] button to start or stop the playback.

### Note:

This function supports playing back MIDI and WAV files only.

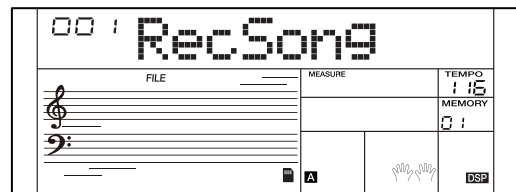
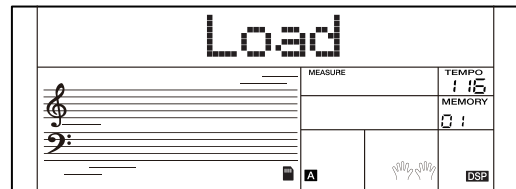


## Loading Files from the SD Card

1. Press the [SD CARD] button to enter SD card mode, then use the data dial to select “Load”.
2. Press the [>] button, and it will show all the MIDI files under the root directory of the SD card.
3. Use the data dial to select a file and press [>] button to confirm. Now, the instrument’s LCD will show a user song name “xxxx RecSong” or “xxxx No File!”.
4. Use the data dial to select a user song slot, then press [>] button to execute loading.

### Notes:

1. If the selected user song slot is blank, when the loading process is finished, the LCD will show this user song name.
2. If the selected user song slot has data (occupied), the LCD will prompt “Sure?”, indicating this loading operation will overwrite the existing data. Now you can press [>] button to execute loading. The data that has been overwritten cannot be recovered. Or you can press [<] to cancel loading.



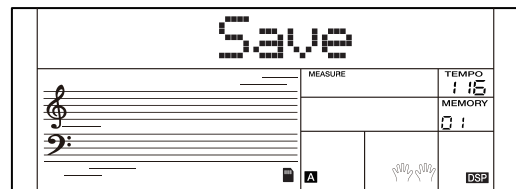
## Saving Files to the SD Card

1. Press the [SD CARD] button to enter SD card mode, then use the data dial to select “Save”.
2. Press the [>] button, and it will save all the user songs from the instrument to the SD card in this name “UserSong00X\_NUB.mid”. If the user song has no data, the LCD will prompt “No File!”.
3. When the saving process is finished, the LCD will temporarily show “save ok! ”, then return to show the root directory of the SD card.
 

**Description of the File Name “UserSong00X\_NUB.mid”**

“UserSong00X” is the user song name and number, corresponding to the user songs on the instrument.

“NUB” is the file number of the saved song (001~512).



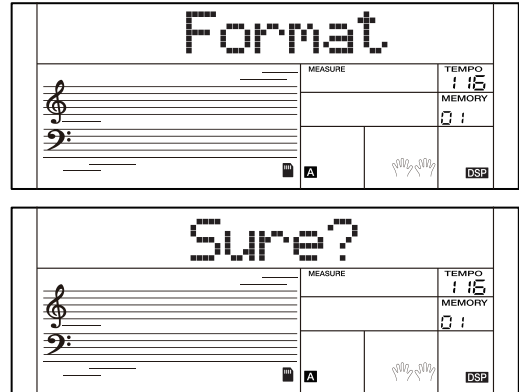
## Connecting an SD Card

### Formatting the SD Card

1. Press the [SD CARD] button to enter SD card mode, then use the data dial to select "Format".
2. Press the [>] button, and the LCD will prompt "Sure?" indicating it will format this SD card.
3. Press the [>] button again to confirm formatting, or press [C] to cancel formatting.

**Note:**

This operation will delete all data on the SD card. This data cannot be recovered after formatting. Do not remove the SD card or turn off the power during the formatting progress, otherwise, it may cause damage to the SD card.



## Performance Memory

**Note:** Hold down both the [STORE] and [M1] buttons, then turn on the power. This operation will reset the performance memory to factory default setting.

### To Register the Panel Settings

Hold down the [STORE] button, then press one of the [M1] - [M4] buttons to save the current panel settings to that memory.

**Note:** This operation will overwrite the previous data.

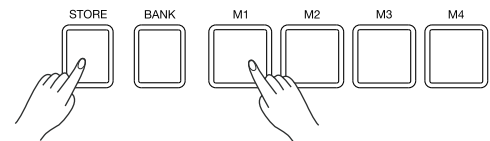
### To Recall a Panel Setting

Press one of the [M1] - [M4] buttons. It will recall the settings saved in that memory. This will reset the related parameters on the control panel.

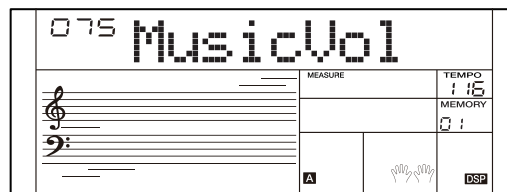
**Note:** Performance memory cannot be recalled when Q.S. function is in use.

### To Select a Memory Bank

1. Press the [BANK] button. The LCD shows the current bank number.
2. Press this button repeatedly to select a desired bank number.



1. Press the [MIXER] button to enter the mixer menu. The instrument will automatically show the mixer parameters that are available for the current mode. For example, when in Song mode, if you enter the mixer menu, it will smartly show “MusicVol” on top of the menu.
2. Use the data dial to select the parameters in the mixer menu.
3. Use the [<] / [>] buttons to change the volume setting of the selected parameter.
4. Pressing [<] and [>] buttons at the same time will reset to the default volume setting. If the current volume setting is the same as the default setting, pressing the [<] and [>] buttons will mute/unmute the selected parameter.



### Notes:

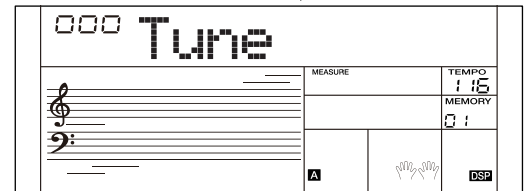
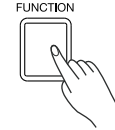
1. The available mixer parameters may vary when in different modes.
2. It will exit the mixer menu if there is no operation in 5 seconds.

Detailed parameters and their volume ranges:

Parameter	LCD Display	Volume Range
Rhythm sub. volume	Rhythm_s: xxx	0 - 127
Rhythm master volume	Rhythm_m: xxx	0 - 127
Bass volume	Bass: xxx	0 - 127
Chord 1 volume	Chord1: xxx	0 - 127
Chord 2 volume	Chord2: xxx	0 - 127
Chord 3 volume	Chord3: xxx	0 - 127
Phrase 1 volume	Phrase1: xxx	0 - 127
Phrase 2 volume	Phrase2: xxx	0 - 127
Sound R1 volume	Upper1: xxx	0 - 127
Sound R2 volume	Upper2: xxx	0 - 127
Sound L volume	Lower: xxx	0 - 127
Music volume (Song, SD card, Accompaniment)	MusicVol: xxx	0 - 127
Microphone volume	Mic Vol: xxx	0 - 127
Metronome volume	MetroVol: xxx	0 ~ 127

# Function Menu

1. Press the [FUNCTION] button to enter the function menu. The LCD shows the current parameter.
2. Use the data dial to select a parameter to edit.
3. Use the [<] / [>] buttons to change the setting. Pressing [<] and [>] buttons at the same time will reset to the default setting.



## Note:

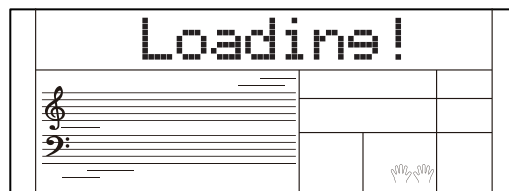
It will exit the function menu if there is no operation in 5 seconds.

No.	Parameter	LCD Display	Range	Description
1	Tune	xxx Tune	-50 ~ +50 (default:0)	Adjust the pitch of the entire keyboard up or down by 2 cents within the range of $\pm 50$ .
2	Touch Response	xxx Touch	OFF, 1, 2, 3, 4, 5 (default:2)	Set the velocity response of the keyboard.
3	Transpose	xxx Transpos	-12 ~ +12 (default:0)	Shift the pitch of the entire keyboard up or down by a maximum of one octave in semitone steps.
4	Split Point	xxx Split Pt	1 ~ 61 (default:19)	Adjust the split point in the Twinova mode, the Fingered function and the Split mode.
5	Metronome Beat	xxx Beat	0, 2 ~ 9 (default:4)	Set the number of beats in one measure.
6	Pedal Type	xxx Ped ****	001 Ped Sust 002 Ped Soft 003 Ped St/T 004 Ped Mem (default:001 Ped Sust)	Assign different functions to the sustain pedal. 001 Sustain 002 SoftPedal 003 Start/Stop (to start/ stop style playback) 004 Memory (to switch the Performance Memory)
7	EQ Type	xxx EQ ****	001 EQ Flat 002 EQ Pop 003 EQ Rock 004 EQ Class 005 EQ Jazz 006 EQ Dance (default:001 EQ Flat)	Select the EQ type of the instrument. Flat,Pop, Rock, Classical, Jazz, Dance
8	Octave	xxx Octave	-2 ~ +2 (default:0)	Shift the pitch of the current sound layer up or down by one octave.
9	Reverb Type	xxx Rev*****	001 Rev Room1 002 Rev Room2 003 Rev Room3 004 Rev Hall1 005 Rev Hall2 006 Rev Hall3 007 Rev Chr1 008 Rev Chr2 009 Rev Gara1 010 Rev Gara2 (default: 004 Rev Hall1)	Select the reverb type of the instrument. Room1, Room2, Room3, Hall1, Hall2, Hall3, Church1, Church2, Garage1, Garage2
10	Reverb Level	xxx Rev Lev	0 ~ 127 (default:40)	Adjust the reverb level.
11	External Mic Reverb Level	xxx MIC Rev	0~127 (default:63)	Adjust the external microphone reverb level.
12	Chorus Type	xxx Chr*****	001 Chr Duet1 002 Chr Duet2 003 Chr Trio1 004 Chr Trio2 005 Chr Flgr1 006 Chr Flgr2 007 Chr Rtry1 008 Chr Rtry2 (default: 001 Chr Duet1)	Select the chorus type of the instrument. Duet 1, Duet 2, Trio 1, Trio 2, Flanger1, Flanger2, GM Rotary Speaker1, GM Rotary Speaker2
13	Chorus Level	xxx Chr Lev	0 ~ 127 (default:0)	Adjust the chorus level.

14	Harmony Type	xxx Hrm****	001 HrmDuet 002 HrmTrio 003 Hrm1+5 004 HrmOct 005 HrmCtDut 006 HrmBlock 007 Hrm4Cls1 008 Hrm4Cls2 009 Hrm4Open (default:001 HrmDuet )	Select the harmony type of the instrument. Duet, Trio, 1+5, Octave, CtryDuet, Block, 4Close1, 4Close2, 4Open
15	Scale Switch	xxx Scale Sw	OFF, ON (default:OFF)	Turn the scale tuning on or off.
16	Scale Type	xxx Scale***	001 ScalePyt 002 ScaleMaj 003 ScaleMin 004 ScaleMea 005 ScaleWer 006 ScaleKir (default:001 ScalePyt)	Select the scale type of the instrument. Pythagorean, Just Major, Just Minor, Meantone, Werckmeister, Kirnberger
17	Scale Root	xxx Scale: **	001 Scale:C 002 Scale:C# 003 Scale:D 004 Scale:D# 005 Scale:E 006 Scale:F 007 Scale:F# 008 Scale:G 009 Scale:G# 010 Scale:A 011 Scale:A# 012 Scale:B (default:001 Scale:C )	Specify the scale root note when scale tuning is turned on. C, C#, D, D#, E, F, F#, G, G#, A, A#, B
18	MIDI In	xxx MIDI In	1 ~ 16, ALL (default:ALL)	Specify the MIDI In channel.
19	MIDI Out	xxx MIDI Out	1 ~ 16 (default:1)	Specify the MIDI Out channel.
20	Record Type	xxx Rec ****	001 Rec MIDI 002 Rec WAV (default:001 Rec MIDI)	Select the format of recording files. MIDI, WAV
21	Twinova Octave	xxx TwinoOct	-2 ~ +2 (default:0)	
22	Fade Time	xxx FadeTime	1 ~ 20 (default:10)	Specify the time period of fade-in and fade-out in style playback.
23	DSP	xxx DSP	OFF, ON (default:ON)	Turn the DSP effect on or off.
24	Slicer Type	xxx Slicer	1 ~ 2 (default:1)	Specify the Slicer effect applied to the sections in Mix playback.
25	Touch Pad Control	xxx Pad ****	001 Pad Rele 002 Pad Hold (default:001 Pad Rele )	Release: Effects will be reset to default when the finger is released from the Touch pad. Hold: Effects will be held after the finger is released from the Touch pad.
26	Song Loop	xxx SongLoop	001,ALL,OFF (default:ALL)	Specify how the songs will be played back. 001,ALL,OFF
27	Sampler Pitch Correction	xxx Pitch Co	OFF, ON (default:ON)	Turn the pitch correction on or off.
28	Power Off Time	xxx PowerOff	OFF, 015, 060 (default:15)	The instrument will automatically shut down after 15 minutes of inactivity; you can disable this function or change the time setting.

# Factory Reset

Hold down the [<] and [>] buttons at the same time, then turn on the power. It will reset to factory default settings, and delete all user data on the instrument, including user songs, user memory and user sounds. The LCD will show “Loading!”. When factory reset is completed, the instrument will start normally.



# Troubleshooting

Problem	Possible Cause and Solution
The speakers produce a pop sound whenever the power is turned on or off.	This is normal and is no cause for alarm.
Speakers do not produce sound when the keyboard is played.	<ol style="list-style-type: none"> <li>1. Check if the master volume is set too low.</li> <li>2. Check if the R1/R2/L sound volume is set too low in the mixer menu.</li> <li>3. Check if headphones are plugged into the PHONES jack.</li> </ol>
The speakers produce noise when a mobile phone is put near them.	Using a mobile phone in close proximity to the instrument may produce interference. To prevent this, turn off the mobile phone or use it farther away from the instrument.
The auto accompaniment does not play back even when Sync is in standby and a key is pressed.	You may be playing keys in the right hand range of the keyboard. To start the accompaniment with Sync Start, make sure to play keys in the left-hand range.
Certain notes seem to be in the wrong pitch.	Make sure that the tune value is set to 0. Press and hold the [<] and [>] buttons and turn on the power to restore factory settings.
When connecting to computer, the instrument cannot be recognized.	Check if the USB cable is firmly connected. Try connecting another USB port on the computer. This instrument is plug and play and should work without installing a driver.
The pedal does not respond.	Check if the pedal cable is firmly connected.
It cannot read/save to the SD card.	Make sure your SD card is in FAT32 format and not multi-partitioned.
It shuts down after a period of time.	The auto power off function will turn off the instrument after a preset period of time when the instrument is not in use. You can adjust the auto-off function in the function menu.
The Harmony function does not work.	Harmony function is not available when Sound R1 is a drum kit.

# Specifications

Keyboard	61 touch response
Display	Backlit LCD
Polyphony (max)	64
Sounds	600 preset Sounds + 5 sampling (10 seconds in total)
Layer	Yes
Split	Yes
Duo (Twinova)	Yes
Styles	200 preset
Style Control	Start / Stop Sync Start Intro / Ending Main A / Fill in A Main B / Fill in B Chord Mode Fade in/out Quick Setting
Style Creator	...
Q.S.	Yes
Chord Types	32
Effects	DJ Effects / Touch Pad DSP on/off
Master EQ	6 types
Mixer	Yes
Reverb	10 types 128 levels
Chorus	8 types 128 levels
Sequencer	5 user songs
Demo Song	3
Power Off Protection	Yes
Performance Memory	6 preset banks x 4
Performance Enhance	Harmony Arpeggiator
Music Library	200 preset songs; Music Tutorial System 310 album; 30 mix patterns

Audio Playback	Yes	
Audio Recorder	Yes	
Score Display	...	
Assignable Controllers	1 Pedal Touch Pad	
Pitch Bend	Yes	
Modulation	...	
Pitch Adjustment	Transpose; Octave Tuning	
Metronome	Yes	
Tempo	5-280	
Other control	Touch Response: 5 types, off Piano Mode Sustain Chord Reference Mix Mode	
Interaction & Expansion	USB MIDI USB Audio	
External Drive	SD or SDHC memory cards (4GB - 128GB)	
Connectors	Microphone	Yes (support user sound sampling)
	Phones	1/4" jack
	Pedals	Sustain
	MIDI	...
	USB	USB MIDI USB Audio
	Input Output	1/8" jack Yes (Phones jack)
Power	DC 12V or 6 AA-size batteries	
Amplifiers	15 watt x 2	
Speakers	12cm x 2	
Dimensions LWH (mm)	956 x 360 x 118	
Weight (kg)	5.1	

\* All specifications and appearances are subject to change without notice.

# Sound List

NO.	English Name	LCD Name
<b>PIANO</b>		
1	Acoustic Grand Piano 1	AcGdPno1
2	Acoustic Grand Piano 2	AcGdPno2
3	Wide Grand Piano	WdGdPno
4	Dark Grand Piano	DkGdPno
5	Bright Acoustic Piano 1	BritPno1
6	Bright Acoustic Piano 2	BritPno2
7	Wide Bright Piano	WdBritPn
8	Electric Grand Piano	E.GrdPn
9	Wide Grand Electric Piano	WdGrdEP
10	Dark Electric Grand Piano	DarkEP
11	Honky Tonk Piano	HnkyTonk
12	Wide Honky Tonk Piano	WdHnTonk
13	Dark Honky Tonk Piano	DkHnTonk
14	Harpsichord	Harpsi
15	Octave Mix Harpsichord	OHarpsi
16	Wide Harpsichord	WHarpsi
17	With Key Off Harpsichord	OfHarpsi
18	Octave Grand Piano 1	OctGdPn1
19	Octave Grand Piano 2	OctGdPn2
20	Piano & Strings	Pno&Str
21	Piano & Pad	Pno&Pad
22	Piano & Choir	Pno&Cho
23	Piano & EP	Piano&EP
24	Piano & Vibraphone	Pno&Vib
25	Detuned Electric Piano 1	DetunEP1
26	Detuned Electric Piano 2	DetunEP2
27	Electric Piano 1	E.Piano1
28	Electric Piano 2	E.Piano2
29	Electric Piano 3	E.Piano3
30	Electric Piano 4	E.Piano4
31	Mix Velocity Electric Piano 1	MVE.Pno1
32	Mix Velocity Electric Piano 2	MVE.Pno2
33	60's Electric Piano	60'sEP
34	Legend EP	LegendEP
35	Phase EP	PhaseEP
36	Clavi 1	Clavi1
37	Clavi 2	Clavi2
38	Phase Clavi	PhaseClv
39	Wah Clavi	WahClavi
40	Pulse Clavi	PulseClv
41	Wide Clavi	WideClv
42	Octave Clavi	OctClavi
43	Funk EP	FunkEP
44	Warm EP	WarmEP
45	Choir EP	ChoirEP
46	Wah EP	WahEP
47	Modern EP	ModernEP
48	Strings EP	StringEP
<b>CHRO PERC</b>		
49	Celesta 1	Celesta1
50	Celesta 2	Celesta2
51	Celesta 3	Celesta3
52	Wide Celesta	WideCele
53	Dark Celesta	DarkCele

54	Phase Celesta	PhaseCe
55	Wah Celesta	WahCele
56	Glockenspiel 1	Glocken1
57	Glockenspiel 2	Glocken2
58	Glockenspiel 3	Glocken3
59	Wide Glockenspiel	WideGlo
60	Dark Glockenspiel	DarkGlo
61	Phase Glockenspiel	PhaseGlo
62	Music Box 1	MusicBx1
63	Music Box 2	MusicBx2
64	Wide Music Box	WMusicBx
65	Phase Music Box	PhaseMB
66	Vibraphone 1	Vibra1
67	Vibraphone 2	Vibra2
68	Wide Vibraphone	WdVibra
69	Marimba 1	Marimba1
70	Marimba 2	Marimba2
71	Wide Marimba	WMarimba
72	Dark Marimba	DMarimba
73	Xylophone 1	Xylopho1
74	Xylophone 2	Xylopho2
75	Wide Xylophone	WXylopho
76	Dark Xylophone	DXylopho
77	Phase Xylophone	PhaseXyl
78	Tubular Bells 1	TubulB1
79	Tubular Bells 2	TubulB2
80	Church Bell	ChurBel
81	Carillon	Carillon
82	Dulcimer 1	Dulcime1
83	Dulcimer 2	Dulcime2
84	Santur	Santur
<b>ORGAN</b>		
85	60's Italian Organ	60'sOrgn
86	Drawbar Organ 1	DrawOrg1
87	Drawbar Organ 2	DrawOrg2
88	Drawbar Organ 3	DrawOrg3
89	Detuned Drawbar Organ	DeDraOrg
90	Detuned Percussive Organ	DePerOrg
91	Percussive Organ 1	PercOrg1
92	Percussive Organ 2	PercOrg2
93	Percussive Organ 3	PercOrg3
94	Dark Percussive Organ	DkPerOrg
95	Rock Organ 1	RockOrg1
96	Rock Organ 2	RockOrg2
97	Dark Rock Organ	DRockOrg
98	Octave Rock Organ	OctRkOrg
99	Detuned Rock Organ	DeRkOrg
100	Church Organ 1	ChurOrg1
101	Church Organ 2	ChurOrg2
102	Octave Mix Church Organ	OtChuOrg
103	Detuned Church Organ	DeChuOrg
104	Reed Organ 1	ReedOrg1
105	Reed Organ 2	ReedOrg2
106	Octave Reed Organ	OctRdOrg
107	Detuned Reed Organ	DeRdOrg
108	Rotary Organ	RotaOrg

# Sound List

109	Puff Organ	PuffOrg
110	Accordion 1	Acordin1
111	Accordion 2	Acordin2
112	Octave Accordion	OctAcord
113	Detuned Accordion	DetAcord
114	Harmonica 1	Harmnic1
115	Harmonica 2	Harmnic2
116	Rock Harmonica	RockHarm
117	Tango Accordion 1	TanAcid1
118	Tango Accordion 2	TanAcid2
119	Octave Tango Accordion	OtTanAcid
120	Detuned Tango Accordion	DeTanAcid
<b>GUITAR</b>		
121	Nylon Guitar 1	NylonGt1
122	Nylon Guitar 2	NylonGt2
123	With Key Off Nylon Guitar	OfNylGtr
124	Ukulele	Ukulele
125	Steel Acoustic Guitar 1	StlAcGt1
126	Steel Acoustic Guitar 2	StlAcGt2
127	12-Strings Guitar	12StrGtr
128	Mandolin 1	Mandoln1
129	Mandolin 2	Mandoln2
130	Steel Guitar With Body Sound	StlGtBdy
131	Jazz Electric Guitar 1	JzE.Gtr1
132	Jazz Electric Guitar 2	JzE.Gtr2
133	Pedal Steel Electric Guitar	PedE.Gtr
134	Clean Electric Guitar 1	CleanGt1
135	Clean Electric Guitar 2	CleanGt2
136	Detuned Clean Electric Guitar	DeClnGt
137	Mid Tone Guitar	MidTonGt
138	Muted Electric Guitar 1	MtE.Gtr1
139	Muted Electric Guitar 2	MtE.Gtr2
140	Funky Cutting Electric Guitar	FunkCtGt
141	Muted Velo-Sw Electric Guitar	MtVelGt
142	Jazz Man	JazzMan
143	Overdriven Guitar 1	OvdrGtr1
144	Overdriven Guitar 2	OvdrGtr2
145	Pinch Guitar	PinchGt
146	Distortion Guitar 1	DistGtr1
147	Distortion Guitar 2	DistGtr2
148	Feedback Distortion Guitar	FeedbkGt
149	Guitar Feedback	GtrFedbk
150	Distorted Rhythm Guitar	DistRtGt
151	Guitar Harmonics 1	GtHarmo1
152	Guitar Harmonics 2	GtHarmo2
153	Velocity Nylon Guitar	VelNyGt
<b>BASS</b>		
154	Acoustic Bass 1	A.Bass1
155	Acoustic Bass 2	A.Bass2
156	Wah Bass	WahBass
157	Finger Electric Bass	FgrBass
158	Finger Slap Bass	FgrSlpBs
159	Pick Electric Bass 1	PikBass1
160	Pick Electric Bass 2	PikBass2
161	Fretless Bass 1	FretBs1

162	Fretless Bass 2	FretBs2
163	Slap Bass 1	SlapBs1
164	Slap Bass 2	SlapBs2
165	Slap Bass 3	SlapBs3
166	Synth Bass 1	SynBass1
167	Synth Bass 2	SynBass2
168	Synth Bass 3	SynBass3
169	Warm Synth Bass	WarmBass
170	Resonance Synth Bass	ResoBass
171	Clavi Bass	ClavBass
172	Hammer	Hammer
173	Attack Synth Bass	AtckBass
174	Rubber Synth Bass 1	RuberBs1
175	Rubber Synth Bass 2	RuberBs2
176	Attack Pulse	AtackPls
177	Saw Bass	SawBass
178	House Bass	HouseBs
179	Square Bass	SquareBs
180	Inductive Bass 1	InducBs1
181	Inductive Bass 2	InducBs2
182	Heavy Bass 1	HeavyBs1
183	Heavy Bass 2	HeavyBs2
<b>STRINGS</b>		
184	Violin 1	Violin1
185	Violin 2	Violin2
186	Slow Attack Violin	SlViolin
187	Viola 1	Viola1
188	Viola 2	Viola2
189	Cello 1	Cello1
190	Cello 2	Cello2
191	Contrabass 1	Contrbs1
192	Contrabass 2	Contrbs2
193	Tremolo Strings 1	TremStr1
194	Tremolo Strings 2	TremStr2
195	Pizzicato Strings 1	PizzStr1
196	Pizzicato Strings 2	PizzStr2
197	Orchestral Harp 1	Harp1
198	Orchestral Harp 2	Harp2
199	Yang Chin	YangChin
200	Timpani 1	Timpani1
201	Timpani 2	Timpani2
202	String Ensembles 1	Strings1
203	String Ensembles 2	Strings2
204	String Ensembles 3	Strings3
205	Strings & Brass	Str&Bras
206	60's Strings	60'sStr
207	Synth Strings 1	SynStrs1
208	Synth Strings 2	SynStrs2
209	Synth Strings 3	SynStrs3
210	Aahs Choir 1	AahChor1
211	Aahs Choir 2	AahChor2
212	Oohs Voice 1	OhVoice1
213	Oohs Voice 2	OhVoice2
214	Humming	Humming
215	Analog Voice	AnaVoice

216	Synth Voice 1	SyVoice1
217	Synth Voice 2	SyVoice2
218	Orchestra Hit 1	OrchHit1
219	Orchestra Hit 2	OrchHit2
220	Bass Hit Plus	BassHit
221	6th Hit	6thHit
222	Euro Hit	EuroHit
<b>BRASS</b>		
223	Trumpet 1	Trumpet1
224	Trumpet 2	Trumpet2
225	Soft Dark Trumpet	DarkTrp
226	Trombone 1	Trmbone1
227	Trombone 2	Trmbone2
228	Bright Trombone	BritTrom
229	Tuba 1	Tuba1
230	Tuba 2	Tuba2
231	Muted Trumpet 1	MuteTrp1
232	Muted Trumpet 2	MuteTrp2
233	French Horn	FrHorn
234	Warm French Horn	WmFrHorn
235	Brass Section	Brass
236	Octave Mix Brass Section	OctBrass
237	Synth Brass 1	SynBras1
238	Synth Brass 2	SynBras2
239	Synth Brass 3	SynBras3
240	Synth Brass 4	SynBras4
241	Synth Brass 5	SynBras5
242	Analog Synth Brass 1	AnaBras1
243	Analog Synth Brass 2	AnaBras2
244	Jump Brass	JumpBrs
245	Funny 1	Funny1
246	Funny 2	Funny2
<b>REED</b>		
247	Soprano Sax 1	SprnSax1
248	Soprano Sax 2	SprnSax2
249	Soprano Sax 3	SprnSax3
250	Alto Sax 1	AltoSax1
251	Alto Sax 2	AltoSax2
252	Tenor Sax 1	TenoSax1
253	Tenor Sax 2	TenoSax2
254	Baritone Sax	BariSax
255	Oboe 1	Oboe1
256	Oboe 2	Oboe2
257	Two Oboes	TwoOboes
258	English Horn 1	EngHon1
259	English Horn 2	EngHon2
260	Two English Horns	2EngHons
261	Bassoon 1	Bassoon1
262	Bassoon 2	Bassoon2
263	Two Bassoons	2Bassoons
264	Clarinet 1	Clarinet1
265	Clarinet 2	Clarinet2
266	Two Clarinets	2Clarinets
<b>PIPE</b>		
267	Piccolo 1	Piccolo1

268	Piccolo 2	Piccolo2
269	Two Piccolos	2Piccolos
270	Sweet Flute	SwtFlute
271	Flute 1	Flute1
272	Flute 2	Flute2
273	Two Flutes	2Flutes
274	Recorder 1	Record1
275	Recorder 2	Record2
276	Two Recorders	2Records
277	Pan Flute 1	PanFlut1
278	Pan Flute 2	PanFlut2
279	Blown Bottle	Bottle
280	Shakuhachi	Shakhch
281	Whistle 1	Whistle1
282	Whistle 2	Whistle2
283	Ocarina 1	Ocarina1
284	Ocarina 2	Ocarina2
<b>SYN LEAD</b>		
285	Square Lead 1	SquarLd1
286	Square Lead 2	SquarLd2
287	Square Lead 3	SquarLd3
288	Sawtooth Lead 1	SawLead1
289	Sawtooth Lead 2	SawLead2
290	Sawtooth Lead 3	SawLead3
291	Sawtooth Lead 4	SawLead4
292	Saw + Pulse Lead	SawPlsLd
293	Double Sawtooth Lead	DubSawLd
294	Sequenced Analog Lead 1	SeqAnLd1
295	Sequenced Analog Lead 2	SeqAnLd2
296	Wavy Sawtooth 1	WavySaw1
297	Wavy Sawtooth 2	WavySaw2
298	Calliope Lead	CalioLd
299	Chiff Lead 1	ChiffLd1
300	Chiff Lead 2	ChiffLd2
301	Charang Lead 1	CharaLd1
302	Charang Lead 2	CharaLd2
303	Wire Lead 1	WireLd1
304	Wire Lead 2	WireLd2
305	Voice Lead 1	VoiceLd1
306	Voice Lead 2	VoiceLd2
307	Fifths Lead 1	FifthLd1
308	Fifths Lead 2	FifthLd2
309	Bass Lead	BassLead
310	Soft Wrl Lead	SofWrlLd
311	Massiness	Massin
312	Sine Lead	SineLead
313	Slow Square Lead	SlwSquLd
314	Sine Solo	SineSolo
315	Thick Square	ThickSqu
316	Two Oscillators Lead	2OscLead
317	Bauble Lead	BaubleLd
318	Analog Lead	AnaLead
319	Big Lead	BigLead
320	Fat Lead	FatLead
321	4th PWM	4thPWM
322	Delayed Lead 1	DelayLd1

# Sound List

323	Delayed Lead 2	DelayLd2
324	Corrie	Corrie
325	Quint	Quint
326	Inductive Lead	InductLd
327	Move Up Lead	MoveUpLd
328	Synth Saw	SynthSaw
329	Synth Distorted Lead	SynDstLd
330	Synth Bandwidth Lead	SynBdwLd
331	Synth Dual Saw Lead	SynSawLd
332	Synth Sync Lead	SynSyLd
333	Decay Lead	DecayLd
334	Warm Square Lead	WmSquare
335	Funny Saw	FunnySaw
336	Fargo Saw	FargoSaw
337	Jump Lead	JumpLead
338	Short Lead	ShortLd
<b>SYN PAD</b>		
339	New Age Pad 1	NewAgPd1
340	New Age Pad 2	NewAgPd2
341	Warm Pad 1	WarmPad1
342	Warm Pad 2	WarmPad2
343	Warm Pad 3	WarmPad3
344	Sine Pad	SinePad
345	Poly Synth Pad 1	PolSyPd1
346	Poly Synth Pad 2	PolSyPd2
347	Choir Pad 1	ChoirPd1
348	Choir Pad 2	ChoirPd2
349	Itopia Pad	ItopiaPd
350	Bowed Pad 1	BowedPd1
351	Bowed Pad 2	BowedPd2
352	Metallic Pad 1	MetalPd1
353	Metallic Pad 2	MetalPd2
354	Halo Pad 1	HaloPad1
355	Halo Pad 2	HaloPad2
356	Sweep Pad 1	SweepPd1
357	Sweep Pad 2	SweepPd2
358	Pan Pad	PanPad
359	Dipolar Pad	DipolPad
360	PWM Pad	PWMPad
361	Horn Pad	HornPad
362	Click Pad	ClickPad
363	Analog Pad	AnalogPd
364	80's Poly Pad	80'sPad
365	Soft 4th PWM	So4thPWM
366	Soft Synth Calliope	SofCalio
367	5th Saw Wave	5thSaw
368	Soft 5th Lead	Sof5thLd
369	Slow Square	SlSquare
370	Space Voice	SpcVoice
371	Rising	Rising
372	Congregate	Congrega
373	Strong Detune Pad	StgDePd
374	Resonant Pad	ResonPd
375	Breath Pad	BreathPd
376	Fantasia Pad	FantasPd

377	EP Pad	EPPad
378	New Age	NewAge
379	Sine	Sine
<b>SYN SFX</b>		
380	Rain FX	RainFX
381	Sound Track FX	SoudTrk
382	Prelude	Prelude
383	Crystal FX	Crystal
384	Synth Mallet FX	SynMalet
385	Atmosphere FX	Atmosph
386	Warm Air	WarmAir
387	Brightness FX	Bright
388	Smog	Smog
389	Goblins FX	Goblins
390	Choir Bell	ChoirBl
391	Echoes FX	EchoesFX
392	Echo Pan FX	EchoPan
393	Echo Bell FX	EchoBel
394	Sci-Fi FX	Sci-FIFX
<b>ETHNIC MISC</b>		
395	Sitar	Sitar
396	Bend Sitar	BndSitr
397	Banjo	Banjo
398	Shamisen	Shamisen
399	Koto	Koto
400	Taisho Koto	TaishoKt
401	Kalimba	Kalimba
402	Bag Pipe	BagPipe
403	Fiddle	Fiddle
404	Shanai	Shanai
<b>PERCUSSION</b>		
405	Tinkle Bell	TnklBel
406	Agogo	Agogo
407	Steel Drums	SteelDr
408	Woodblock	Wodblok
409	Castanets	Castant
410	Taiko Drum	TaikoDr
411	Concert Bass Drum	ConBsDr
412	Acoustic Bass Drum	AcBsDrum
413	Room Kick	RoomKick
414	Power Kick	PowKick
415	Electric Bass Drum	BassDrum
416	Analog Bass Drum	AnBsDrum
417	Jazz Kick	JazzKick
418	Side Stick	SidStick
419	Analog Rim Shot	AnRmShot
420	Acoustic Snare	A.Snare
421	Room Snare	RomSnare
422	Power Snare	PowSnare
423	Electric Snare	E.Snare
424	Analog Snare	AnaSnare
425	Jazz Snare	JazSnare
426	Brush Tap	BrushTap
427	Concert SD	ConcerSD
428	Hand Clap	HandClap

429	Tom	Tom
430	Room Tom	RoomTom
431	Power Tom	PowerTom
432	Electric Tom	ElecTom
433	Analog Tom	AnaTom
434	Brush Tom	BrushTom
435	Closed Hi-Hat	ClosedHH
436	Analog Closed Hi-Hat	AnCloHH
437	Pedal Hi-Hat	PedalHH
438	Open Hi-Hat	OpenHH
439	Crash Cymbal	CrashCym
440	Analog Cymbal	AnaCym
441	Ride Cymbal	RideCym
442	China Cymbal	ChinaCym
443	Ride Bell	RideBell
444	Tambourine	Tambouri
445	Splash Cymbal	SplsCym
446	Cowbell	Cowbell
447	Analog Cowbell	AnaCowbl
448	High Bongo	HiBongo
449	Low Bongo	LowBongo
450	Mute Hi Conga	MtHiCnga
451	Open Hi Conga	OpHiCnga
452	Low Conga	LowConga
453	Analog Hi Conga	AnHiCnga
454	Analog Mid Conga	AnMiCnga
455	Analog Low Conga	AnLoCnga
456	High Timbale	HiTimbal
457	Low Timbale	LoTimbal
458	Cabasa	Cabasa
459	Maracas	Maracas
460	Analog Maracas	AnMaraca
461	Short Guiro	ShGuiro
462	Long Guiro	LonGuiro
463	Claves	Claves
464	Mute Cuica	MtCuica
465	Open Cuica	OpCuica
466	Mute Triangle	MtTrgle
467	Open Triangle	OpTrgle
468	Shaker	Shaker
469	Mute Surdo	MtSurdo
470	Open Surdo	OpSurdo
471	Melodic Tom 1	MelodTm1
472	Melodic Tom 2	MelodTm2
473	Power Melodic Tom	PwMldTom
474	Synth Drum	SynDrum
475	Rhythm Box Tom	RthBxTm
476	Electric Drum	ElecDrm
477	Reverse Cymbal	RevCymb
<b>SFX</b>		
478	Guitar Fret Noise	GtFeNoz
479	Guitar Cutting Noise	GtCtNoz
480	Acoustic Bass String Slap	BsStSlp
481	Breath Noise	BrthNoz
482	Flute Key Click	FIKyClk

483	Seashore	Seashore
484	Rain	Rain
485	Thunder	Thunder
486	Wind	Wind
487	Stream	Stream
488	Bubble	Bubble
489	Bird Tweet 1	Tweet1
490	Bird Tweet 2	Tweet2
491	Dog	Dog
492	Horse Gallop	HorseGlp
493	Telephone Ring 1	Telphon1
494	Telephone Ring 2	Telphon2
495	Door Creaking	DoorCrek
496	Door	Door
497	Scratch	Scratch
498	Wind Chime	WindChim
499	Helicopter	Helicptr
500	Car Engine	CarEngin
501	Car Stop	CarStop
502	Car Pass	CarPass
503	Car Crash	CarCrash
504	Siren	Siren
505	Train	Train
506	Jetplane	Jetplane
507	Starship	Starship
508	Burst Noise	BurtNoiz
509	Applause	Applause
510	Laughing	Laughing
511	Screaming	Scream
512	Punch	Punch
513	Heart Beat	HeartBet
514	Footsteps	Footstep
515	Gunshot	Gunshot
516	Machine Gun	MachnGun
517	Lasergun	Lasergun
518	Explosion	Explosio
<b>COMBI</b>		
519	Stereo Piano & Strings Pad	Pn&StrPd
520	Stereo Piano & Choir	Pn&Choir
521	Stereo Piano & Synth Strings	Pn&SyStr
522	Stereo Piano & Warm Pad	Pn&WrmPd
523	Stereo Piano & Soft EP	StePn&EP
524	FM Electric Piano	FME.Pno
525	Digital Piano	DigitlPno
526	E.Piano & Strings	EP&Str
527	E.Piano & Acoustic Guitar	EP&Gtr
528	E.Piano & Vibraphone	EP&Vibra
529	E.Piano 2 & Pad	EP2&Pad
530	E.Piano 2 & Strings	EP2&Str
531	Harpichord & Stereo Strings	Hrpc&Str
532	Music Box & Stereo Strings	MBx&Str
533	Vibraphone & Stereo Strings	Vib&Str
534	Octave Vibraphone	OctVibra
535	Chromatic Percussion Group	ChroPerc
536	Marimba & Kalimba	Mar&Kalb

# Sound List

537	Marimba Delay	MarDelay
538	Octave Xylophone	OctXylo
539	Organ & Stereo Strings	Orgn&Str
540	Stereo Organ & Piano	Orgn&Pno
541	Rock Organ & Strings	RkOr&Str
542	Church Organ & Choir	ChuOr&Ch
543	Church Organ & Strings	ChuOr&St
544	Acoustic Guitar & Flute	Gt&Flute
545	Acoustic Guitar & Clavi	Gt&Clavi
546	24-Strings Guitar	24StrGtr
547	Steel Guitar & Warm Pad	StlGt&Pd
548	Stereo Strings & Horn	Str&Horn
549	Orchestra	Orchestr
550	Full Strings	FullStr
551	Symphony	Symphony
552	Stereo Choir & Strings	Chor&Str
553	Stereo Choir & Steel Guitar	Ch&StlGt
554	Three Trumpets	3Trump
555	Trombone & Stereo Strings	Trom&Str
556	Three Trombones	3Trmbone
557	Three Muted Trumpets	3MtTrump
558	Club Brass	ClubBras
559	Brass & Woodwinds	Brs&Wood
560	Woodwinds & Strings	Wood&Str
561	Small Woods Section	SmaWood
562	Pan Flute & Strings Pad	PanFl&Pd
563	Koto & Shamisen	Kto&Sham
564	Flute & Clarinet	Flu&Clar
565	Flute & Oboe	Flu&Oboe
566	Flute & Bassoon	Flute&Bn
567	Woodwinds Group 1	WoodGrp1
568	Woodwinds Group 2	WoodGrp2
569	Woodwinds Group 3	WoodGrp3
570	Woodwinds Group 4	WoodGrp4
571	Octave Flute	OctFlute
572	Flute & Octave Oboe	Fl&OctOb
573	Flute & Octave Clarinet	Fl&OctCl
574	Oboe & Bassoon	Oboe&Bn
575	Oboe & Clarinet	Ob&Clar
576	Octave Oboe	OctOboe
577	Oboe & Octave Clarinet	Ob&OctCl
578	Oboe & Octave Bassoon	Ob&OctBn
579	Clarinet & Bassoon	Clar&Bn
580	Clarinet & Octave Oboe	Clar&Ob
<b>CHINESE</b>		
581	Zheng	Zheng
582	Re Wa Pu	ReWaPu
583	Er Hu	ErHu
584	Qu Di	QuDi
585	Hu Lu Si	HuLuSi
586	Suo Na	SuoNa
<b>DRUMS</b>		
587	Standard Set	StandSet
588	Room Set	RoomSet
589	Power Set	PowerSet

590	Electronic Set 1	ElecSet1
591	Electronic Set 2	ElecSet2
592	Analog Set 1	AnalSet1
593	Analog Set 2	AnalSet2
594	Jazz Set	JazzSet
595	Brush Set	BrushSet
596	Orchestral Set	OrchSet
597	SFX Set	SFXSet
598	House Set 1	HousSet1
599	House Set 2	HousSet2
600	Dance Set	DanceSet

# Style List

NO.	English Name	LCD Name
<b>8BEAT</b>		
1	8 Beat Guitar Pop	8BtGtPop
2	8Beat Piano	8BtPiano
3	8Beat Ballad	8BtBld
4	8Beat 1	8Beat1
5	8Beat Hip Hop	8BtHiHop
6	8Beat Blues Rock	8BtBluRk
7	8Beat Pop	8BtPop
8	8 Beat Funk	8BtFunk
9	Rhythm&Beat 1	Rhy&Bt1
10	8Beat Disco	8BtDisc
11	Guitar Pop 1	GtPop1
12	8Beat 2	8Beat2
13	Sweet Beat	SweetBt
14	8Beat Dance	8BtDance
15	8Beat 3	8Beat3
16	Rhythm&Beat 2	Rhy&Bt2
17	8Beat Rock	8BtRock
<b>16BEAT</b>		
18	16Beat 1	16Beat1
19	16Beat Funk	16BtFuk
20	16Beat Ballad 1	16BtBld1
21	16Beat R&B	16BtR&B
22	Pop 16Beat 1	Pop16Bt1
23	16Beat Dance	16BtDanc
24	Pop 16Beat 2	Pop16Bt2
25	16Beat 2	16Beat2
26	Pop 16Beat 3	Pop16Bt3
27	Modern 16Beat	Modr16Bt
28	16Beat Hot	16BtHot
29	16Beat Modern	16BtModr
30	16Beat Ballad 2	16BtBld2
31	Pop Shuffle	PopShfl
<b>POP&amp;BALLAD</b>		
32	Pop Rock 1	PopRock1
33	Pop Dance 1	PopDanc1
34	Pop Fusion	PopFusn
35	Analog Night 1	AnalgNt1
36	6/8 Pop	6/8Pop
37	Brit. Pop 1	BritPop1
38	Brit. Pop 2	BritPop2
39	Pop Hit	PopHit
40	Fusion Shuffle	FusShuf1
41	Analog Night 2	AnalgNt2
42	Guitar Pop 2	GtPop2
43	Pop Beat	PopBeat
44	Soft Beat	SoftBeat
45	60's Pop	60'sPop
46	R&B Ballad 1	R&BBld1
47	Piano Pop	PianoPop
48	Soft Ballad	SoftBald
49	Natural Ballad	NatulBld
50	Love Ballad	LoveBald
51	Easy Ballad	EasyBald
52	Miami Folk	MiamiBld

53	Slow Ballad	SlowBald
54	Folk Ballad	FolkBald
55	Pop Ballad 1	PopBald1
56	Pop Ballad 2	PopBald2
57	EP Ballad	EPBallad
58	New R&B Ballad	NewRBBld
59	Sweet Ballad	SweetBld
60	Piano Ballad	PianoBld
<b>ROCK</b>		
61	Rock	Rock
62	New Wave	NewWave
63	Ska	Ska
64	Pop Rock 2	PopRock2
65	Slow Rock	SlowRock
66	70's Rock&Roll	70'sRock
67	Folk Rock	FolkRock
68	Soft Rock	SoftRock
69	Old Rock	OldRock
70	Rock&Roll 1	R'N'R1
71	Rock Shuffle	RockShfl
72	Rock&Roll 2	R'N'R2
73	Pop Rock 3	PopRock3
74	Hard Rock	HardRock
<b>BALLROOM</b>		
75	Tango	Tango
76	Spain Matador	Matador
77	Twist 1	Twist1
78	Twist 2	Twist2
79	Big Band Fox	BandFox
80	Slow Fox	SlowFox
81	Slow Waltz 1	SlowWlz1
82	Swing Fox	SwingFox
83	Salsa 1	Salsa1
84	Cha Cha 1	ChaCha1
85	Cha Cha 2	ChaCha2
86	Beguine 1	Beguine1
87	Beguine 2	Beguine2
88	Rumba 1	Rumba1
89	Samba 1	Samba1
90	Samba 2	Samba2
<b>DANCE</b>		
91	Techno 1	Techno1
92	Hip Hop	HipHop
93	House 1	House1
94	House 2	House2
95	Pop Dance 2	PopDanc2
96	Down Beat	DownBeat
97	Techno 2	Techno2
98	Progressive	Progress
99	Rap 1	Rap1
100	Rap 2	Rap2
101	Disco	Disco
102	Soft Disco	SoftDisc
103	Disco Party	DscParty
104	70's Disco	70'sDisc
105	70's Disco Funk	70'sFunk

# Style List

106	Club Dance	ClubDanc
<b>SOUL &amp; FUNK</b>		
107	Funk	Funk
108	Classic Funk	ClasFunk
109	Jay R&B	JayR&B
110	Gospel Swing	GopSwing
111	Gospel	Gospel
112	Electric Funk	ElecFunk
113	Jazz Funk	JazzFunk
114	Groove	Groove
115	Soul	Soul
116	Hip Hop Soul	HipHopSl
117	R&B	R&B
118	Soul Beat	SoulBeat
119	R&B Ballad 2	R&BBld2
120	British Soul Pop	BritSoul
<b>JAZZ &amp; SWING</b>		
121	Latin Jazz	LatinJz
122	Big Band 1	BigBand1
123	Dixieland 1	Dixland1
124	Guitar Swing	GtSwing
125	Broadway Big Band	BwayBand
126	Swing	Swing
127	Fusion	Fusion
128	Swing Shuffle	SwingSfl
129	Big Band Medium	BandMid
130	Dixieland 2	Dixland2
131	Ragtime	Ragtime
132	Swing Ballad	SwingBal
<b>COUNTRY</b>		
133	Country Pop 1	CntyPop1
134	Bluegrass 1	Blugras1
135	8Beat Country	8BtCnty
136	Modern Country	ModrCnty
137	Country Pop 2	CntyPop2
138	Bluegrass 2	Blugras2
139	2/4 Country	2/4Cntry
140	Country Quick Steps	QuickStp
141	Country Folk	CntyFolk
142	Country Shuffle	CnyShufl
143	Country Ballad	CntyBld
144	70's Country Rock	70'sCnty
<b>LATIN</b>		
145	Samba 3	Samba3
146	Bossa Nova	BosaNova
147	Latin	Latin
148	New Reggae	NewRegga
149	Reggae Dance	DanRegga
150	Paso Doble	Pasodobl
151	Lite Bossa	LteBossa
152	Latin Rock	LatinRck
153	Beguine 3	Beguine3
154	Slow Bolero	SIBolero
155	Disco Samba	DscSamba
156	Mambo	Mambo
157	Meneito	Meneito

158	Rumba 2	Rumba2
159	Rumba 3	Rumba3
160	Lambada	Lambada
161	Pop Cha Cha 1	PChaCha1
162	Pop Cha Cha 2	PChaCha2
163	Salsa 2	Salsa2
164	Pop Cha Cha 3	PChaCha3
<b>TRADITIONAL</b>		
165	Waltz	Waltz
166	Old Waltz	OldWaltz
167	English Waltz	EngWaltz
168	German Waltz	GemWaltz
169	Italian Mazurka	ItaMazuk
170	Mexico Waltz	MexWaltz
171	Vienna Waltz	VinaWltz
172	Slow Waltz 2	SlwWltz2
173	Jazz Waltz	JazzWltz
174	Polka	Polka
175	6/8 March	6/8March
176	German Polka	GemPolka
177	Army March	ArmMarch
178	March	March
179	US March	USMarch
180	Musette	Musette
<b>WORLD</b>		
181	Enka Ballad	EnkaBald
182	Laendler	Laendler
183	Hawaiian	Hawaiian
184	Sirtake	Sirtake
185	Dangdut	Dangdut
186	New Age	NewAge
187	Tarantella	Tarantel
188	Scottish	Scottish
<b>PIANIST</b>		
189	Pianist	Pianist
190	Jazz	Jazz
191	Piano Rock	PianoRk
192	Pop Bossa	PopBossa
193	March	March
194	Piano Beat	PianoBt
195	Piano Bar	PianoBar
196	Blues	Blues
197	Slow Waltz	SlowWltz
198	Ballad	Ballad
199	6/8 Ballad	6/8Bald
200	Pop	Pop

# Song List

No.	English Name	LCD Name
<b>FOLK &amp; COUNTRY</b>		
1	Toccata	Toccata
2	Carry Me Back To Old Virginny	Virginny
3	El Condor Pasa	ElCondor
4	Greensleeves	Sleeves
5	Home Sweet Home	SwetHome
6	Aloha Oe	AlohaOe
7	Long Long Ago	LongAgo
8	Heidenroslein	Heidenro
9	Die Lorelei	Lorelei
10	Over The Waves	OverWave
11	Gwine To Run All Night	Gwine
12	Oh! Susanna	Susanna
13	Turkey In The Straw	TukyStaw
14	The House Of The Rising Sun	RiseSun
15	My Old Kentucky Home	Kentucky
16	Home On The Range	HomeRnge
17	Her Bright Smile Haunts Me Still	HerSmile
18	The Blue-Bells Of Scotland	BlueBell
19	Old Black Joe	BlackJoe
20	Old Dog Tray	DogTray
21	Aura Lea	AuraLea
22	When The Saints Go Marching In	Marching
23	I've Been Working On The Railroad	WorkRail
24	With Games	WithGame
25	Way Home	WayHome
26	Michael Row The Boat Ashore	RowBoat
27	Arirang	Arirang
28	The Quilting Party	TheParty
29	The Colorado Trail	TheTrail
30	I'd Like To Be In Texas	InTexas
31	Shenandoah	Shenando
32	Down In The Valley	Valley
33	On Top Of Old Smoky	TopSmoky
34	Barbara Allen	Allen
35	Careless Love	CaleLove
36	Sweet Betsy From Pike	SwetPike
37	Jesse James	James
38	The Cowboy's Lament	CowboyLa
39	Red River Valley	RedRiver
40	Jeanie With The Light Brown Hair	Jeanie
<b>GOLDEN &amp; POP</b>		
41	Traumerei	Traumere
42	My Darling Clementine	Clemtine
43	Twinkle Twinkle Little Star	Twinkle
44	Yankee Doodle	YankeeD
45	Fruhlingsstimmen	Fruhling
46	My Bonnie	MyBonnie
47	Jingle Bells	JingBell
48	Frohlicher Landmann	Landmann
49	Are You Lonesome Tonight?	Lonesome
50	Joy To The World	JoyWorld
51	La Paloma	LaPaloma
52	Toy Symphony	ToySymph

53	Auld Lang Syne	LangSyne
54	La Cucaracha	Cucarach
55	Ave Maria	AveMaria
56	La Reine De Saba	Saba
57	Tales Of Hoffman	Hoffman
58	Little Brown Jug	BrownJug
59	La Donne Mobile	DoneMble
60	Battle Hymne Of The Republic	BatlHyme
61	Serenata	Serenata
62	Yellow Rose Of Texas	YellRose
63	Bridal March	Bridal
64	The Wabash Cannon Ball	CannBall
65	Ich Liebe Dich	LieDich
66	Chanson Du Toreador	Toreador
67	Annie Laurie	AnnieLa
68	Danny Boy	DannyBoy
69	An Die Musik	Musik
70	Lieder Ohne Worte Op.62 No.6	Lieder
71	Spanish Serenade	Serenade
72	Die Forelle	Forelle
73	Madame Butterfly	Madame
74	Invitation To The Dance	ToDance
75	Valse Des Fleurs	Fleurs
76	Moments Musicaux	Musicaux
77	Moldau	Moldau
78	Silent Night	SttNight
79	Dreaming Of Home And Mother	Dreaming
80	Summertime	Summer
81	Ring Ring De Banjo	DeBanjo
82	Der Lindenbaum	DerLinde
83	Zigeunerweisen	Zigeuner
84	The Maiden's Prayer	Prayer
85	Der Freischutz	DerFreis
86	Maria! Mari!	Maria!
87	Anitra's Dance	Anitra
88	Sadko-Chanson Indoue	Chanson
89	Orpheus	Orpheus
90	William Tell Overture	Overture
<b>CLASSICAL</b>		
91	Symphony No.6 "Pathetic"	Sympony6
92	Wedding March	Wedding
93	Wiegenlied 3	Wieglied3
94	Turkish March	Turkish
95	Wiegenlied 2	Wieglied2
96	Prelude Op.28 No.15	Prelude
97	Menuet	Menuet
98	Piano Concerto	Concerto
99	Piano Concerto 2	Concrto2
100	Symphony No. 94 "Suprise"	No. 94
101	Polonaise	Polonais
102	Rondeau	Rondeau
103	Fur Elise	FurElise
104	Heidenroslein	Heidenro
105	Symphony No.5	Symphony
106	Moon Light Sonata	Sonata

107	A Lover's Concerto	Concerto
108	Air For The G-String	G-String
109	An Der Shonen Blauen Donau	Donau
110	Auf Flugeln Des Gesanges	Gesanges
111	Beautiful Dreamer	Dreamer
112	Dance Des Mirlitons	Mirliton
113	Etude Op.10 No.3	Etude3
114	Gavotte	Gavotte
115	Whispering Hope	Whisper
116	Hungarian Dances No.5	Hungaian
117	From The New World	NewWorld
118	Serenata Rimpiant	Serenata
119	Triumphal March	Trimphal
120	The Skaters Waltz	Skaters
121	O Sole Mio	OSoleMio
122	Waves Of The Danube	Danube
123	Santa Lucia	SantaLuc
124	Solveig's Song	Solveig
125	Piano Sonatan No.8 In C Minor (Pathetique)	Patheque
126	Brahms Waltz	BrmsWltz
127	Aida	Aida
128	Carmen-Prelude	Carmen
129	L'Arlesienne	L'Arlesi
130	Ungarische Tanz	Uungaris
131	Mazurka	Mazurka
132	Pizzicato Polka	Polka
133	Menuett	Menuett
134	Rigoletto	Rigoletto
135	Serenade	Serenade
136	Song Without Words	SongNoWd
137	Swan	Swan
138	The Dying Swan	DyingSwn
139	Swan Lake Valse	SwnWalse
140	The Happy Farmer	HpFarmer
141	The Sleeping Beauty	SleepBty
142	La Traviata	LaTravia
143	Wiegenlied	Wiegenli
144	Mov.2 Adagio Non Troppo Piano Sonata No.9 In D	Sonata9
145	Piano Sonata No.11 In A	Sonata11
146	Prelude In C	Prelude
147	Chinese Dance	ChDance
148	Emperor Waltz	Emperor
149	March Militaire	Militair
150	Symphony No.40	Symphony
PIANO		
151	Hanon Piano Fingering 1	Hanon1
152	Hanon Piano Fingering 2	Hanon2
153	Hanon Piano Fingering 3	Hanon3
154	Hanon Piano Fingering 4	Hanon4
155	Hanon Piano Fingering 5	Hanon5
156	Hanon Piano Fingering 6	Hanon6
157	Hanon Piano Fingering 7	Hanon7
158	Basic Tutorial Beyer Piano 8	Beyer8
159	Basic Tutorial Beyer Piano 12	Beyer12

160	Basic Tutorial Beyer Piano 13	Beyer13
161	Basic Tutorial Beyer Piano 14	Beyer14
162	Cuckoo	Cuckoo
163	Basic Tutorial Beyer Piano 15	Beyer15
164	Basic Tutorial Beyer Piano 16	Beyer16
165	Basic Tutorial Beyer Piano 18	Beyer18
166	Butterfly	Buterfly
167	Basic Tutorial Beyer Piano 19	Beyer19
168	Basic Tutorial Beyer Piano 20	Beyer20
169	Basic Tutorial Beyer Piano 21	Beyer21
170	Basic Tutorial Beyer Piano 29	Beyer29
171	Basic Tutorial Beyer Piano 45	Beyer45
172	Christmas Eve	XmasEve
173	Basic Tutorial Beyer Piano 50	Beyer50
174	Basic Tutorial Beyer Piano 52	Beyer52
175	Basic Tutorial Beyer Piano 55	Beyer55
176	Basic Tutorial Beyer Piano 59	Beyer59
177	Beyer Eight Degrees Jump Etude	BeyrJump
178	Basic Tutorial Beyer Piano The Scale Of C Major	BeyerC
179	Basic Tutorial Beyer Piano 65	Beyer65
180	Basic Tutorial Beyer Piano 66	Beyer66
181	Old Folks At Home (Piano)	OldFolk2
182	Basic Tutorial Beyer Piano The Scale Of G Major	BeyerG
183	Basic Tutorial Beyer Piano 70	Beyer70
184	Basic Tutorial Beyer Piano 72	Beyer72
185	Basic Tutorial Beyer Piano 73	Beyer73
186	Basic Tutorial Beyer Piano 74	Beyer74
187	Yankee Doodle (Piano)	YankeeD2
188	Kaiser Walzer	Kaiser
189	Etude On Leger Lines 2	EtudeLL2
190	From A Story Book	StoryBok
191	Dance Of The Four Swans From "Swan Lake"	SwanLake
192	Jesus Saviour Pilot Me	Jesus
193	Old Macdonald Had A Farm	OldAFarm
194	Away In A Manger	AwayInAM
195	Did You Ever See A Lassie	Lassie
196	Old France	OldFranc
197	Santa Claus Is Coming To Town	SantComn
198	Dancing Raindrops	Raindrop
199	Comin' Round The Mountain	Mountain
200	Song Of The Brook	SofBrook

# Album List

No.	English Name	LCD Name
1	13 Jours en france	13France
2	A lover's concerto	Concerto
3	A time for us	Timeus
4	A whiter shade of pale	WhtShade
5	Adios	Adios
6	After you've gone	U'veGone
7	Again	Again
8	Agua de beber	AguaBebr
9	Air for the G-string	G-String
10	All alone am I	AloneAml
11	All his children	Children
12	All shook up	ShookUp
13	Aloha oe	AlohaOe
14	Always in my heart	MyHeart
15	Amapola	Amapola
16	Amazing grace	AmzGrace
17	Amor	Amor
18	An der shonen blauen donau	Donau
19	Anastasia	Anastasi
20	Angel	Angel
21	Angustia	Angustia
22	Annie laurie	AnnieLa
23	Are you lonesome tonight?	Lonesome
24	Arirang	Arirang
25	Around the world	AroWorld
26	Auf flugeln des gesanges	Gesanges
27	Auld lang syne	LangSyne
28	Ave maria	AveMaria
29	Bad moon rising	BadMoon
30	Battle hymne of the republic	BatIHyme
31	Beautiful dreamer	Dreamer
32	Besame mucho	Besame
33	Beyond the reef	BeyndRef
34	Bibbidi bobbidi boo	Bibbidi
35	Bittersweet samba	Bitsweet
36	Blue christmas	BlueXmas
37	Blue tango	BluTango
38	Blueberry hill	Bluberry
39	Born free	BornFree
40	Brazil	Brazil
41	Breaking up is hard to do	BreakUp
42	Bridal march	Bridal
43	Bridge over troubled water	Bridge
44	Bus stop	BusStop
45	Buttons and bows	BottnBow
46	Cachito	Cachito
47	Canadian sunset	CaSunset
48	Can't help fallin' in love	InLove
49	Carry me back to old virginny	Virginny
50	Chanson D'amour	Chanson
51	Chanson du toreador	Toreador
52	Charade	Charade
53	Chattanooga shoe shine boy	ShoeBoy
54	Cielito lindo	CleLindo
55	Close to you	CloseYou

56	Constantly	Constant
57	Cryin' in the chapel	CryChapl
58	Dance des mirlitons	Mirliton
59	Danny boy	DannyBoy
60	Dark eyes	DarkEyes
61	Diana	Diana
62	Die lorelei	Lorelei
63	Do re mi	DoReMi
64	Dominique	Dominiqu
65	Dream	Dream
66	Dream tango	DremTngo
67	Ebb tide	EbbTide
68	Edelweiss	Edelweis
69	El bimbo	EIBimbo
70	El condor pasa	EIcondor
71	Eso es el amor	EsAmor
72	Esperanza	Esperanz
73	Etude op.10 no.3	Etude3
74	Fascination	Fascina
75	Feelings	Feelings
76	Five hundred miles	500Miles
77	Five minutes more	FiveMore
78	Fly me to the moon	FlyMoon
79	For ever we konw	WeKnow
80	For the good times	GoodTime
81	Frohlicher landmann	Landmann
82	Fruhlingsstimmen	Fruhling
83	Gavotte	Gavotte
84	Green fields	Fields
85	Green grass of home	GreenGrs
86	Greensleeves	Sleeves
87	Gwine to run all night	Gwine
88	Gypsy moon	GypsMoom
89	Happy birthday to you	Birthday
90	Harbour light	Harbour
91	Harlem nocturne	Harlem
92	Hasta manana	HasMana
93	Heidenroslein	Heidenro
94	Her bright smile haunts me still	HerSmile
95	Hernando's hideaway	Hideaway
96	Hey jude	HeyJude
97	Historia de un amor	Historia
98	Home on the range	HomeRnge
99	Home sweet home	SwetHome
100	Hound dog	HoundDog
101	How deep is your love	DeepLove
102	Hungarian dances no.5	Hungaian
103	Hurry sundown	Sundown
104	Hymne a l'amour	L'amour
105	I don't hurt any more	HurtMore
106	I kiss your little hand madame	kissyour
107	I love you much too much	LoveYou
108	I need you now	INeedYou
109	I really don't want to know	DontKnow
110	I went to your wedding	UrWeding
111	If	If

112	If I can dream	IfDream
113	If I give my heart to you	HeartYou
114	In the mood	InMood
115	It's almost tomorrow	Tomorrow
116	It's been a long long time	LongTime
117	Jambalaya	Jambalay
118	Jazz'n' samba	JazSamba
119	Jeanie with the light brown hair	Jeanie
120	Jingle bells	JingBell
121	Johnny B. Goode	B.Goode
122	Joy to the world	JoyWorld
123	Jungle drums	JungleDm
124	Kaiser walzer	Kaiser
125	Keep searchin'	Searchin
126	Killing me softly with his song	HisSong
127	Kiss	Kiss
128	Kiss of fire	KissFire
129	La chanson D'orphee	D'Orphee
130	La contessa scalza	Scalza
131	La cucaracha	Cucarach
132	La donne mobile	DoneMble
133	La mer	LaMer
134	La novia	LaNovia
135	La paloma	LaPaloma
136	La playa	LaPlaya
137	La ragazza di bube	Bube
138	La reine de saba	Saba
139	L'amour est blue	L'amour
140	Lara's theme from "Doctor zhivago"	Zhivago
141	Last waltz	LastWltz
142	Les feuilles mortes	Feuilles
143	Let's get together	Together
144	Little brown jug	BrownJug
145	Long long ago	LongAgo
146	Love is a many-splendored thing	SplndLov
147	Love me with all your heart	AllHeart
148	Love story	LovStory
149	Lullaby of birdland	Birdland
150	Mama inez	Mamalnez
151	Mambo No. 5	MamboNo5
152	Mambo No. 8	MamboNo8
153	March militaire	Militair
154	Maria elena	MriaElna
155	Maria my own	Maria
156	Massachusetts	Maschuse
157	Menuet	Menuet
158	Miami beach rumba	MamiRmba
159	Misty	Misty
160	Mockin'bird hill	BirdHill
161	Moliendo Coffee	Coffee
162	Moody river	ModyRivr
163	Moon river	MoonRivr
164	Moonlight serenade	Moonligt
165	More	More
166	Moscow nights	Moscow
167	Moulin rouge	MoulinRg

168	Mr.lonely	MrLonely
169	My bonnie	MyBonnie
170	My darling clementine	Clemtine
171	My old kentucky home	Kentucky
172	My shawl	MyShawl
173	My way	MyWay
174	Nature boy	NaturBoy
175	Never on sunday	NeverSun
176	New world	NewWorld
177	Night fall	NigtFall
178	Nobody knows the trouble I've seen	Nobody
179	Noche de tokyo	Tokyo
180	Nocturne	Nocturne
181	O sole mio	OSoleMio
182	Oh bury me not on the lone prairie	Prairie
183	Oh! Carol	Oh!Carol
184	Oh! Susanna	Susanna
185	Oh! what a beautiful morning	OMorning
186	Old black joe	BlackJoe
187	Old dog tray	DogTray
188	Old folks at home	OldFolks
189	On a little bamboo bridge	BambooBg
190	On a tropic night	TrpicNgt
191	On london bridge	OnBridge
192	On the beach at bali-bali	BaliBali
193	One way ticket to the blues	OWTickts
194	Only you	OnlyYou
195	Over the rainbow	Rainbow
196	Over the waves	OverWave
197	Par un beau matin d'ete	BeauMatn
198	Patricia	Patricia
199	Penelope	Penelope
200	Perfidia	Perfidia
201	Petite fleur	Fleur
202	Piacer d'amor	Piacer
203	Pizzicato polka	PizzPoka
204	Pretend	Pretend
205	Proud mary	ProdMary
206	Quien sera	QuieSera
207	Quizas Quizas Quizas	Quizas
208	Raindrops keep fallin' on my head	Raindrop
209	Ramona	Ramona
210	Red river valley	RedRiver
211	Rhythm of the rain	RhymRain
212	Rock around the clock	Rock
213	Romance de l'amour	Romance
214	Royal garden blues	RoyalBlu
215	Sail along silv'ry moon	SilyMoon
216	Sailing	Sailing
217	San Francisco	Francico
218	Sans toi mamie	ToiMami
219	Santa claus is comin' to town	SantClau
220	Santa lucia	SantaLuc
221	Scarborough fair	Scarboro
222	Sealed with a kiss	Sealed
223	Sentimental journey	Journey

# Album List

224	Serenade	Serenade
225	Serenata rimpiant	Serenata
226	Siboney	Siboney
227	Silent night	SltNight
228	Singin' in the rain	SingRain
229	Sleepy Lagoon	Lagoon
230	Sloop John B	JohnB
231	Smoke gets in your eyes	SmokeEye
232	So nice	SoNice
233	Solamente una ves	Salament
234	Somebody bad stole de wedding bell	StoleBel
235	Songs of spring	SngSprig
236	Speak softly love	SoftLove
237	ST. Louis blues	ST.Louis
238	Stranger in paradise	Paradise
239	Strangers in the night	Stranger
240	Summer holiday	Holiday
241	Summertime	Summer
242	Summertime in venice	Venice
243	Sunrise sunset	Sunrise
244	Superstar	Superstr
245	Sweet and gentle	SwetGtle
246	Taboo	Taboo
247	Take me home country roads	CntyRoad
248	Tales of hoffman	Hoffman
249	Tammy	Tammy
250	Tango nocturno	TangoNot
251	Tennessee waltz	Tennesse
252	The blue-bells of scotland	BlueBell
253	The breeze and I	Breeze&I
254	The dying swan	DyingSwn
255	The end of the world	EndWorld
256	The exodus song	Exodus
257	The eyes of love	EyesLove
258	The girl from ipanema	Ipanema
259	The great pretender	Pretend
260	The house of the rising sun	RiseSun
261	The impossible dream	ImDream
262	The loco-motion	TheLoco
263	The longest day	Longest
264	The peanut vendor	Vendor
265	The river of no return	NoReturn
266	The shadow of your smile	UrSmile
267	The skaters waltz	Skaters
268	The sound of silence	Silence
269	The wabash cannon ball	CannBall
270	The way we were	TheWay
271	This land is your land	YourLand
272	Those were the days	TheDays
273	Three coins in the fountain	Fountain
274	Tico-tico	TicoTico
275	Tie a yellow ribbon'round the ole oak tree	YeRibbon
276	To love again	LovAgain
277	Toccata	Toccata
278	Tom dooley	TomDoley
279	Tombe la neige	LaNeige

280	Top of the world	TopWorld
281	Toy symphony	ToySymph
282	Traumerei	Traumere
283	Triumphal march	Trimphal
284	Tu ne sais pas aimer	TuAimer
285	Turkey in the straw	TukyStaw
286	Un buco nella sabbia	Sabbia
287	Una lacrima sul viso	Lacrima
288	Unchained melody	Melody
289	Valse des fleurs	Fleurs
290	Vaya con dios	VayaDios
291	Venus	Venus
292	Washington square	Washton
293	Waves of the danube	Danube
294	Wedding march	Wedding
295	When you and I were young maggie	YoungMag
296	Where the boys are	WhereBoy
297	Whispering hope	Whisper
298	Wiegenlied	Wieglied
299	Wiegenlied 2	Wieglied2
300	Without you	WithoutU
301	Wonderland by night	WonNight
302	Words	Words
303	Y.M.C.A.	Y.M.C.A.
304	Yellow rose of texas	YellRose
305	Yesterday	Yestday
306	Yesterday once more	OnceMore
307	You always hurt the one you love	HurtLove
308	You are my sunshine	Sunshine
309	You mean everything to me	MeanToMe
310	Your love is mine	LoveMine

# Mix Pattern List

NO.	English Name	LCD Name
<b>CLUB</b>		
1	Progressive House 1	PrHouse1
2	Electro house	E.House
3	Tropical House	TroHouse
4	Deep House	DepHouse
5	Progressive House 2	PrHouse2
<b>DANCE POP</b>		
6	Dance Pop 1	DancPop1
7	Dance Pop 2	DancPop2
8	Electronic Dance	E.Dance
9	Pop	Pop
<b>EURO DANCE</b>		
10	Euro Dance 1	EurDanc1
11	Euro Dance 2	EurDanc2
12	Euro Dance 3	EurDanc3
<b>TRANCE</b>		
13	Trance 1	Trance1
14	Trance 2	Trance2
15	Trance 90's vibe	90Trance
<b>ELECTRO</b>		
16	Electro 1	Electro1
17	Electro 2	Electro2
18	Electro 3	Electro3
<b>HIP HOP</b>		
19	Hip Hop 1	HipHop1
20	Hip Hop 2	HipHop2
21	US Hip Hop	USHipHop
<b>CHILLOUT</b>		
22	Chillout 1	Chilout1
23	Chillout 2	Chilout2
24	Chillout 3	Chilout3
<b>DUB</b>		
25	Dub 1	Dub1
26	Dub 2	Dub2
27	Dub 3	Dub3
<b>HARDCORE</b>		
28	Hardcore 1	Hdcore1
29	Hardcore 2	Hdcore2
30	Hardcore 3	Hdcore3

# Demo List

No.	English Name	LCD Name
1	Demo 1	Demo1
2	Demo 2	Demo2
3	Demo 3	Demo3

# Chord List

<b>0</b> C 	<b>1</b> C <sub>6</sub> 	<b>2</b> CM <sub>7</sub> 	<b>3</b> CM <sub>7</sub> (#11) 	<b>4</b> CM(9) 	<b>5</b> CM <sub>7</sub> (9) 
<b>6</b> C <sub>6</sub> (9) 	<b>7</b> Caug 	<b>8</b> Cm 	<b>9</b> Cm <sub>6</sub> 	<b>10</b> Cm <sub>7</sub> 	<b>11</b> Cm <sub>7</sub> (b5) 
<b>12</b> Cm(9) 	<b>13</b> Cm <sub>7</sub> (9) 	<b>14</b> Cm <sub>7</sub> (11) 	<b>15</b> CmM <sub>7</sub> 	<b>16</b> CmM <sub>7</sub> (9) 	<b>17</b> Cdim 
<b>18</b> Cdim <sub>7</sub> 	<b>19</b> C <sub>7</sub> 	<b>20</b> C <sub>7</sub> sus4 	<b>21</b> C <sub>7</sub> (b5) 	<b>22</b> C <sub>7</sub> (9) 	<b>23</b> C <sub>7</sub> (#11) 
<b>24</b> C <sub>7</sub> (13) 	<b>25</b> C <sub>7</sub> (b9) 	<b>26</b> C <sub>7</sub> (b13) 	<b>27</b> C <sub>7</sub> (#9) 	<b>28</b> CM <sub>7</sub> aug 	<b>29</b> C <sub>7</sub> aug 
<b>30</b> C <sub>sus</sub> 4 	<b>31</b> C <sub>1+2+5</sub> 	Notes enclosed in parenthesesⓈare optional; the chords could be recognized without them.			

# MIDI Implementation Chart

Function		Transmitted	Recognized	Remarks
Basic Channel	Default	1ch	1-16ch	
	Changed	1-16ch	1-16ch	
Mode	Default	x	3	
	Messages	x	x	
	Altered	*****	x	
Note Number	Note	0—127	0—127	
	:True voice	*****	0—127	
Velocity	Note on	○ 9nH,V=1-127	○ 9nH,V=1-127	
	Note off	x (9nH,V=0)	○(9nH,V=0; 8nH,V=0-127)	
After Touch	Channel	x	x	
Pitch Bend		x	○	
Control Change	0	○	○	Bank Select
	1	○	○	Modulation
	5	x	○	Portamento Time
	6	○	○	Data Entry
	7	○	○	Volume
	10	x	○	Pan
	11	x	○	Expression
	64	○	○	Sustain Pedal
	65	x	○	Portamento On/Off
	66	○	○	Sostenuto Pedal
	67	○	○	Soft Pedal
	80	x	○	Reverb Program
	81	x	○	Chorus Program
	91	○	○	Reverb Level
	93	○	○	Chorus Level
120	○	○	All Sound Off	
121	x	x	Reset All Controllers	
123	○	○	All Notes Off	
Program Change	:True Number	○ *****	○ 0—127	
System Exclusive		x	○	
System Common	:Song Position	x	x	
	:Song Select	x	x	
	:Tune Request	x	x	
System Real Time	:Clock	○	x	
	:Commands	x *1	x	
Aux Messages	:Local On/Off	x	x	
	:Active sense	x	○	
	:System Reset	x	x	
Notes: *1 When the accompaniment is started, an FAH message is transmitted. When accompaniment is stopped, an FCH message is transmitted.				

- Mode 1: Omni On, Poly
- Mode 2: Omni On, Mono

- Mode 3: Omni Off, Poly
- Mode 4: Omni Off, Mono

- x: No
- : Yes

